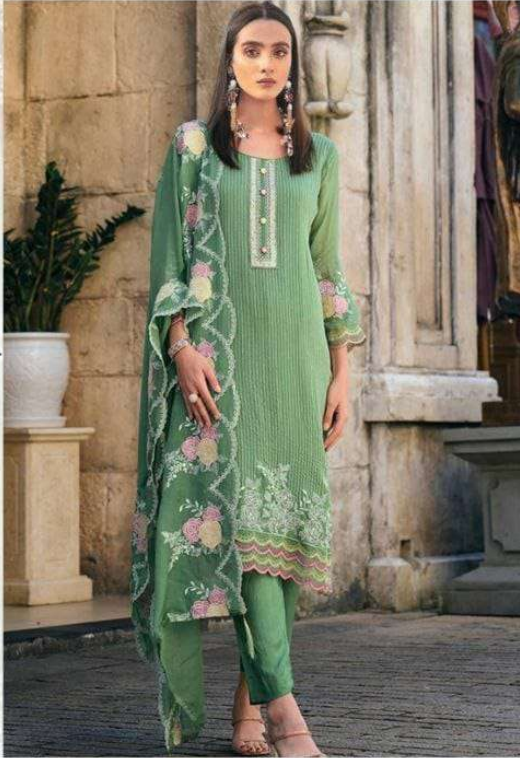


NOOR JAHAN



Fabric Details

D.NO.33

TOP:- Exclusive Soft Organza With Embroidery
INNER:-Heavy Santoon
BOTTOM:-Heavy Santoon
DUPATTA:- Exclusive Soft Organza Embroidery



D.NO.34

CARE INSTRUCTIONS

DRY CLEAN RECOMMENDED
DO NOT USE ANY TYPE OF BLEACH OR STAIN REMOVING CHEMICALS
WASH & SOAK COLORED & WHITE FABRICS SEPARATELY
DO NOT OVER EXPOSE DAMP FABRIC TO STRONG SUNLIGHT
IRON AT MODERATE TEMPERATURE


NOOR JAHAN

NJ 33



Fabric Details

**TOP:-Exclusive Soft Organza
With Embroidery**

INNER:-Heavy Santoon

BOTTOM:-Heavy Santoon

**DUPATTA:- Exclusive Soft
Organza With Embroidery**





NOOR JAHAN
NJ 33

Fabric Details
TOP- Exclusive Soft Organza With Embroidery
INNER- Heavy Santoon
BOTTOM- Heavy Santoon
DUPATTA- Exclusive Soft Organza With Embroidery




NOOR JAHAN

NJ 34



Fabric Details

**TOP:-Exclusive Soft Organza
With Embroidery**

INNER:-Santoon

BOTTOM:-Santoon

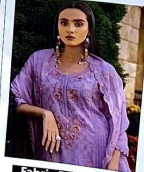
**DUPATTA:- Exclusive Soft
Organza With Embroidery**





NOOR JAHAN

NJ 34



Fabric Details
TOP:- Exclusive Soft Organza
With Embroidery
INNER:- Satton
SLEEVE:- Satton
DUPATTA:- Soft
Organza



NOOR JAHAN



Fabric Details

D.NO.33

TOP:- Exclusive Soft Organza With Embroidery
INNER:-Heavy Santoon
BOTTOM:-Heavy Santoon
DUPATTA:- Exclusive Soft Organza Embroidery



D.NO.34

CARE INSTRUCTIONS

DRY CLEAN RECOMMENDED
DO NOT USE ANY TYPE OF BLEACH OR STAIN REMOVING CHEMICALS
WASH & SOAK COLORED & WHITE FABRICS SEPARATELY
DO NOT OVER EXPOSE DAMP FABRIC TO STRONG SUNLIGHT
IRON AT MODERATE TEMPERATURE