



SF803-A

- Fabric:**
- Embroidered georgette front with sequins work
 - Embroidered georgette back
 - Embroidered georgette sleeves
 - Embroidered tissue sleeves lace
 - Embroidered tissue ghera lace
 - Embroidered chiffon dupatta
 - dull Santoon trouser
 - Embroidered tissue trouser lace



Hand wash only with water temperature not exceeding 30°C.



Do not bleach or treat with chlorine.



Do not iron.



Do not tumble dry.



Do not dry clean.



Do not wet dry.



Drip dry in shade.



SF803-A

Fabric:
 Embroidered georgette front with sequins work
 Embroidered georgette back
 Embroidered georgette sleeves
 Embroidered tissue sleeves lace
 Embroidered tissue ghera lace
 Embroidered chiffon dupatta
 dull Santoon trouser
 Embroidered tissue trouser lace



Hand wash only with water temperature not exceeding 30°C.



Do not bleach or treat with chlorine.



Do not iron.



Do not tumble dry.



Do not dry clean.



Do not wet dry.



Drip dry in shade.



SF803-B

- Fabric:**
- Embroidered georgette front with sequins work
 - Embroidered georgette back
 - Embroidered georgette sleeves
 - Embroidered tissue sleeves lace
 - Embroidered tissue ghera lace
 - Embroidered chiffon dupatta
 - dull Santoon trouser
 - Embroidered tissue trouser lace



SFPK-803


SAFA




SAFA


SAFA
CREATION
www.safa-creation.com




SAFA
 CREATION



SF803-C

Fabric:
 Embroidered georgette front with sequins work
 Embroidered georgette back
 Embroidered georgette sleeves
 Embroidered tissue sleeves lace
 Embroidered tissue ghera lace
 Embroidered chiffon dupatta
 dull Santoon trouser
 Embroidered tissue trouser lace



Hand wash only with water temperature not exceeding 30°C.



Do not bleach or treat with chlorine.



Do not iron.



Do not tumble dry.



Do not dry clean.



Do not wet dry.



Dry in shade.



SF803-D

Fabric:
 Embroidered georgette front with sequins work
 Embroidered georgette back
 Embroidered georgette sleeves
 Embroidered tissue sleeves lace
 Embroidered tissue ghera lace
 Embroidered chiffon dupatta
 dull Santoon trouser
 Embroidered tissue trouser lace



Hand wash only with water temperature not exceeding 30°C.



Do not bleach or treat with chlorine.



Do not iron.



Do not tumble dry.



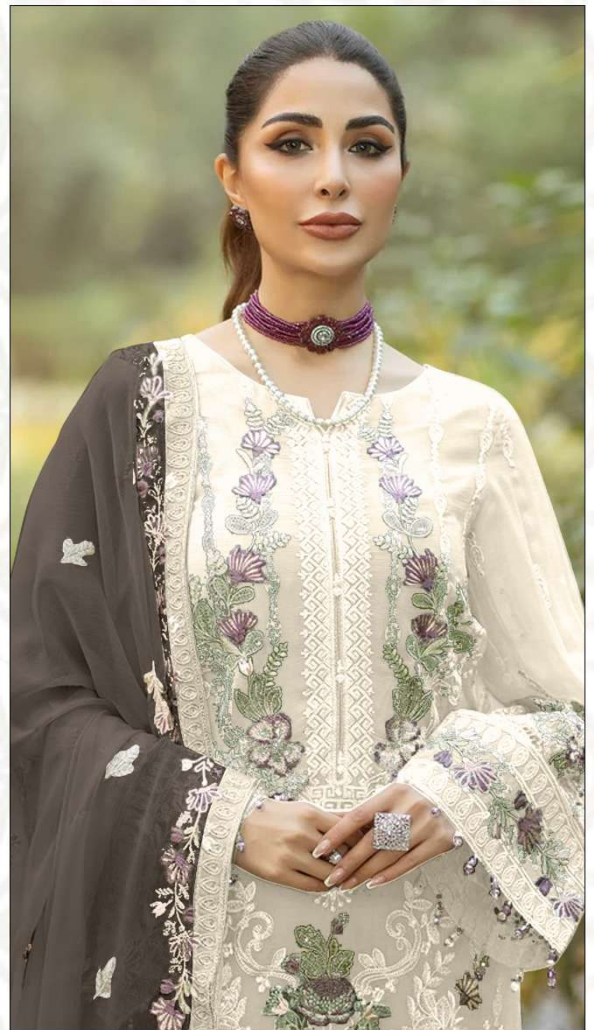
Do not dry clean.



Do not wet dry.



Dry in shade.



SF803-E

Fabric:
 Embroidered georgette front with sequins work
 Embroidered georgette back
 Embroidered georgette sleeves
 Embroidered tissue sleeves lace
 Embroidered tissue ghera lace
 Embroidered chiffon dupatta
 dull Santoon trouser
 Embroidered tissue trouser lace



Hand wash only with water temperature not exceeding 30°C.



Do not bleach or treat with chlorine.



Do not iron.



Do not tumble dry.



Do not dry clean.



Do not wet dry.



Dry in shade.



Fabric:
Embroidered georgette front
with sequins work
Embroidered georgette back
Embroidered georgette sleeves
Embroidered tissue sleeves lace
Embroidered tissue ghera lace
Embroidered chiffon dupatta
dull Santoon trouser
Embroidered tissue trouser lace



SF803-A



SF803-B



SF803-C



SF803-D



SF803-E