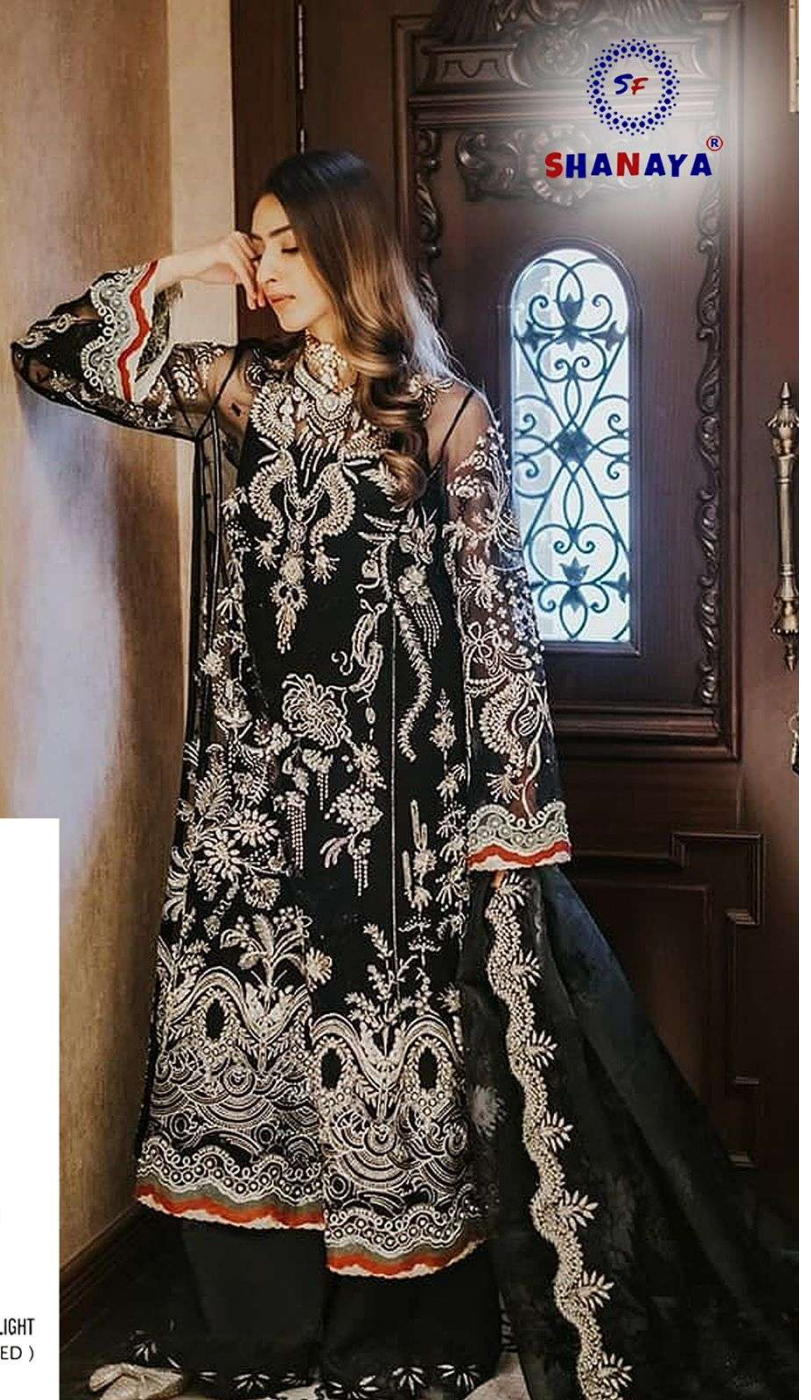
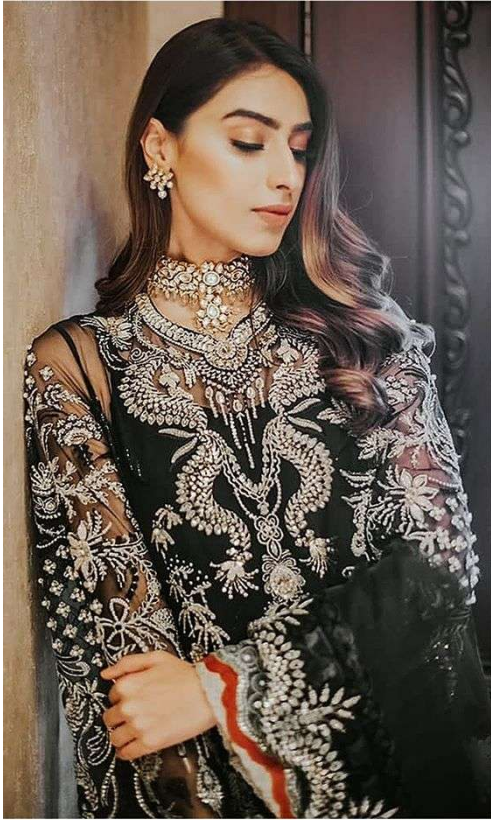


Rose BRIDAL



WASHING INSRUCTIONS

DO NOT USE ANY TYPE OF BLEACH OR STAIN REMOVING CHEMICALS BEFORE CUTTING / STITCHING , FABRIC SHOULD BE SOAKED BE SOAKED IN WATER (ALL COMPONENTS SEPARATELY) FOR 15 MINUTES
DO NOT KEEP WET FABRIC IN TWISTED FROM IN ORDER TO AVOID COPY MARKS I
WASH COLOURED AND WHITE FABRICS SEPARATELY
IRON CLOTHES AT MODERATE TEMPERATURE I DO NOT DRY FABRIC IN DIRECT SUNLIGHT (EXTRA LACES, HANGINGS AND ACCESSORIES ARE NOT INDUDED)



Rose BRIDAL



WASHING INSTRUCTIONS

DO NOT USE ANY TYPE OF BLEACH OR STAIN REMOVING CHEMICALS BEFORE CUTTING / STITCHING , FABRIC SHOULD BE SOAKED IN WATER (ALL COMPONENTS SEPARATELY) FOR 15 MINUTES

DO NOT KEEP WET FABRIC IN TWISTED FORM IN ORDER TO AVOID COPY MARKS | WASH COLOURED AND WHITE FABRICS SEPARATELY

IRON CLOTHES AT MODERATE TEMPERATURE | DO NOT DRY FABRIC IN DIRECT SUNLIGHT (EXTRA LACES, HANGINGS AND ACCESSORIES ARE NOT INCLUDED)



Rose BRIDAL

S-74

WARNING INSTRUCTIONS:
 DO NOT USE HOT IRON OR DRYER ON THIS MATERIAL (SILK).
 DRY IN THE SHADOW. FABRIC SHOULD BE STORED IN WATER.
 ALL DIMENSIONS SHOWN ARE IN CM.
 DO NOT WASH WITH SOAP OR DETERGENT. IT IS BEST TO WASH WITH SOAP.
 WASH IN COLD WATER AND DRY IN SHADOW.
 DO NOT CLEAN WITH BLEACHING POWDER. DO NOT USE FABRIC IN CONTACT WITH
 HOT IRON, WASHING MACHINERY AND DRYERS.

SF
 SHANAYA