

jr
JOH RIVAAJ

JANELLE

Vol-910



JOH RIVAAJ

Dipped in
ELEGANCE
Deep contemplation with
serene COMPOSITIONS

91001



91002

The beauty of a woman is not in a facial mode but the true beauty in a woman is reflected in her soul.....



JOH RIVAAJ



In this sandstone ensemble inspired by Indian paisley

91004



JOH RIVAAJ

**EARTHY
COMPOSITIONS
LOOK LIKE
ADREAM**
The beauty of a woman is not in a facial mode
but the true beauty in a woman is
reflected in her soul.....

Euphony
of deep
hues



91005

Beauty awakens the soul to act.
I don't think of all the misery but of the beauty that still remains
Endurance is beauty.
Beauty is in the heart of the beholder.

JOH RIVAAJ





JOH RIVAAJ

Beauty awakens the soul to act.
I don't think of all the misery but of the beauty that still remains.
Endurance is beauty.
Beauty is in the heart of the beholder.

91006

The advertisement block features the brand name 'JOH RIVAAJ' at the top. Below it are two smaller images of the woman in the saree: one in profile on the left and one with her hands clasped on the right. A quote is centered below the images, and a small logo with the number '91006' is at the bottom right.

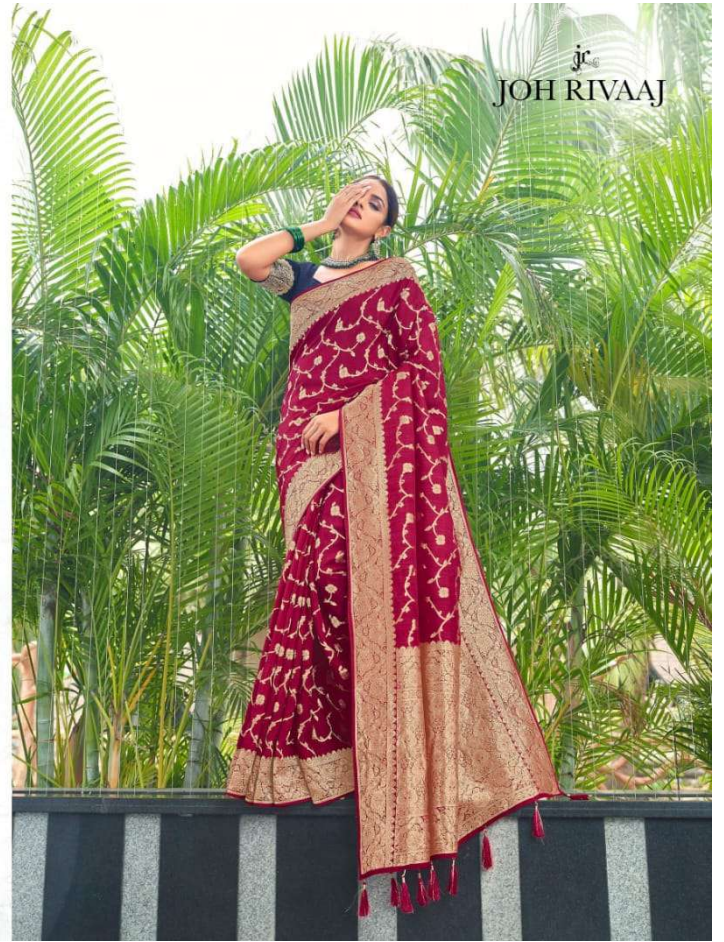


**QUAINT &
HYPNOTIC**

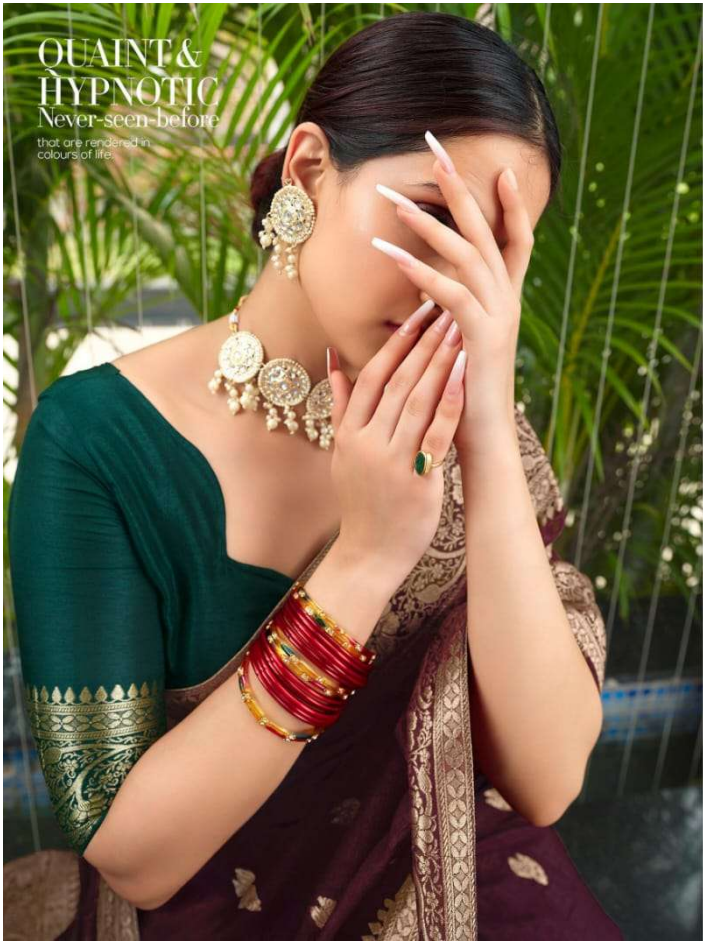
Never-seen-before
that are rendered in
colours of life.



91007







91009





91001



91002



91003



91007



91008



91004



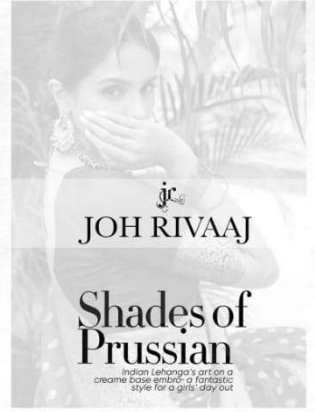
91005



91006



91009



JOH RIVAAJ

Shades of Prussian

Indian Lehanga's art on a cream base embroider a fantastic style for a girls' day out