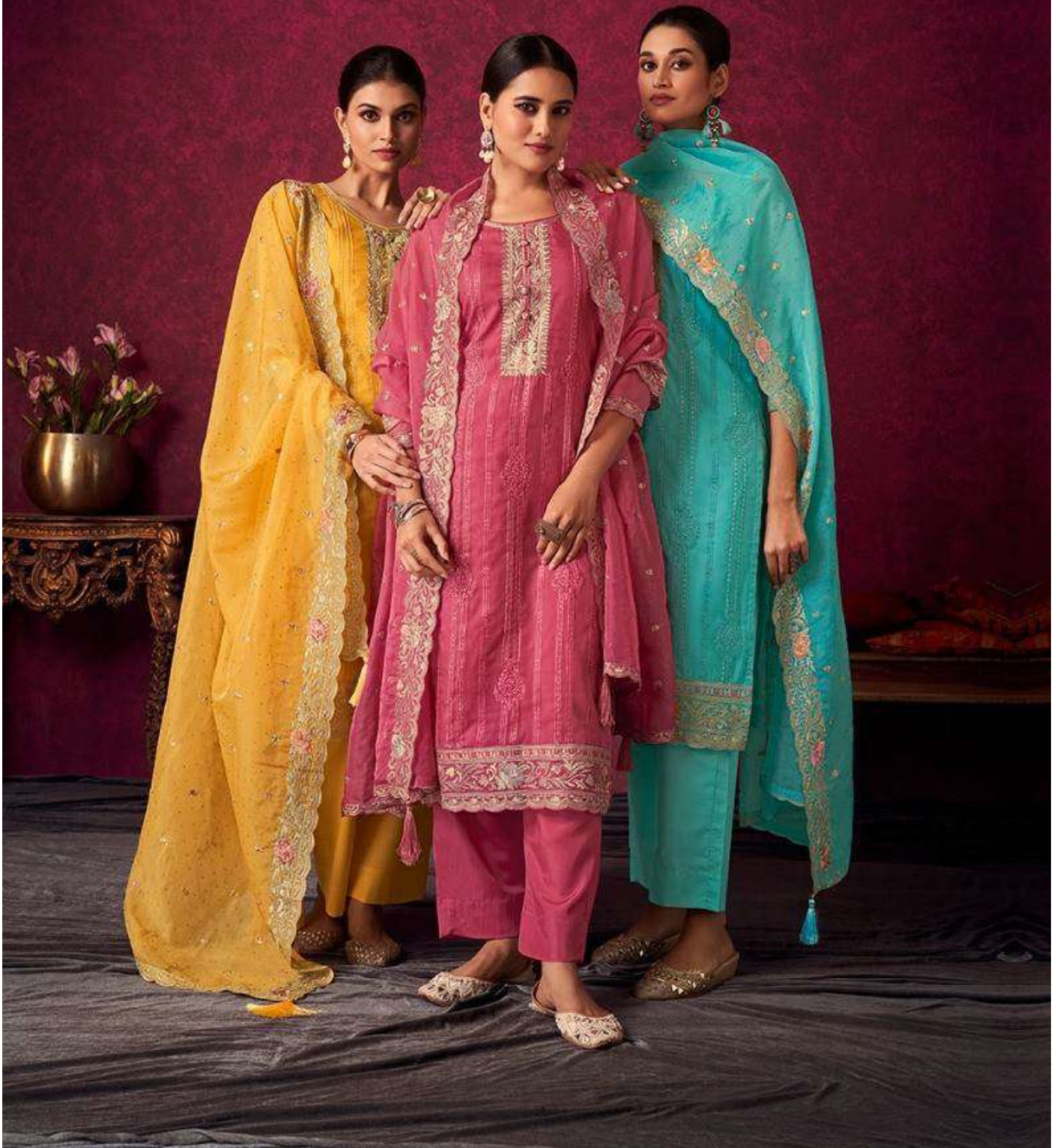


Shree Shalika®  
FASHION

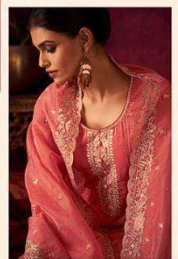
# INSIYA

FESTIVE COLLECTION



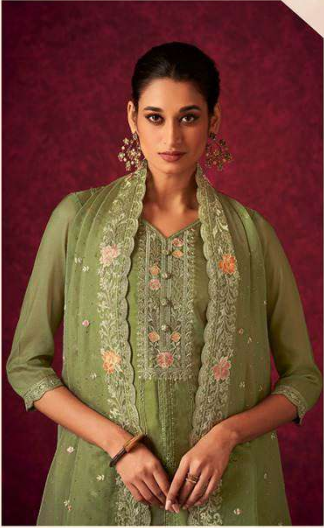


Shree Shalika  
FASHION



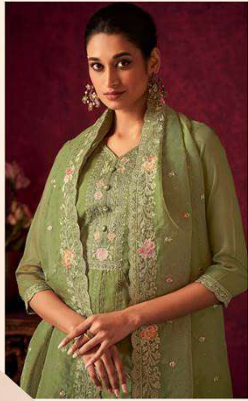
The beauty of a woman is not in her facial  
mode but the true beauty in a woman is reflected by her soul.

CODE#1001



This season is giving a chance to be bright and colorful in your social circle.

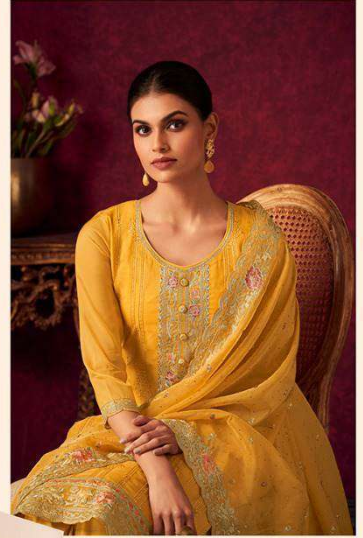
CODE#1002







Shree Shalika  
FASHION



Step back in time and discover the allure of vintage fashion.  
infuse your wardrobe with a touch of classic elegance.

CODE#1003



Exploring how timeless pieces continue to influence contemporary style.

CODE#1004





Spring is around the corner and pastels are making a powerful statement this season.  
CODE#1005



Fashion is for everyone and this edition is  
dedicated to you find your perfect style.  
CODE#1006







<p><b>PRODUCT NAME</b></p>	<p style="text-align: center;"><b>INSIYA</b> FESTIVE COLLECTION</p>	
<p><b>DESIGN NO.</b></p>	<p style="text-align: center;"><b>1001 TO 1006</b></p>	
<p><b>DESCRIPTION</b></p>	<p style="text-align: center;"><u>TOP</u> SOFT ORGANZA WITH HEAVY EMBROIDERY WORK AND BORER WORK</p> <p style="text-align: center;"><u>BOTTOM + INNER</u> DULL SANTOON</p> <p style="text-align: center;"><u>DUPATTA</u> SOFT ORGANZA WITH HEAVY EMBROIDERY WORK &amp; JHARKAN DIAMOND</p>	
<p><b>RATE</b></p>	<p style="text-align: center;"><b>06 PCS CATALOGUE</b></p>	<p style="text-align: center;"><b>2045/-PCS</b></p>





# INSIYA

FESTIVE COLLECTION

Shree Shalika  
FASHION



CODE#1001



CODE#1002



CODE#1003



CODE#1004



CODE#1005



CODE#1006