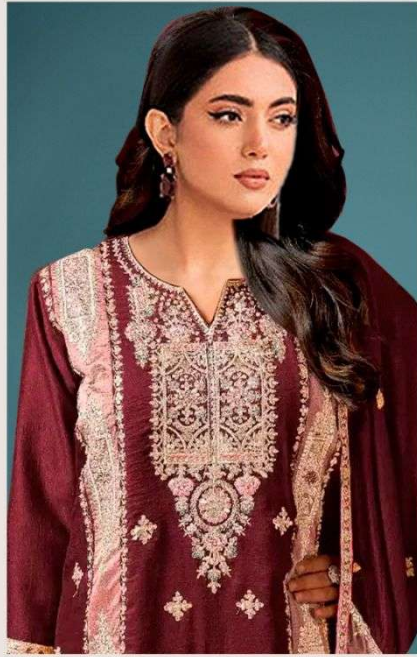




Dinsaa
Sutt



D.NO.239 A

**TOP - CHINON SILK EMBROIDERED
WITH JARKAN WORK**

DUPATTA- CHINON EMBROIDERED

BOTTOM- HEAVY DULL SANTOON

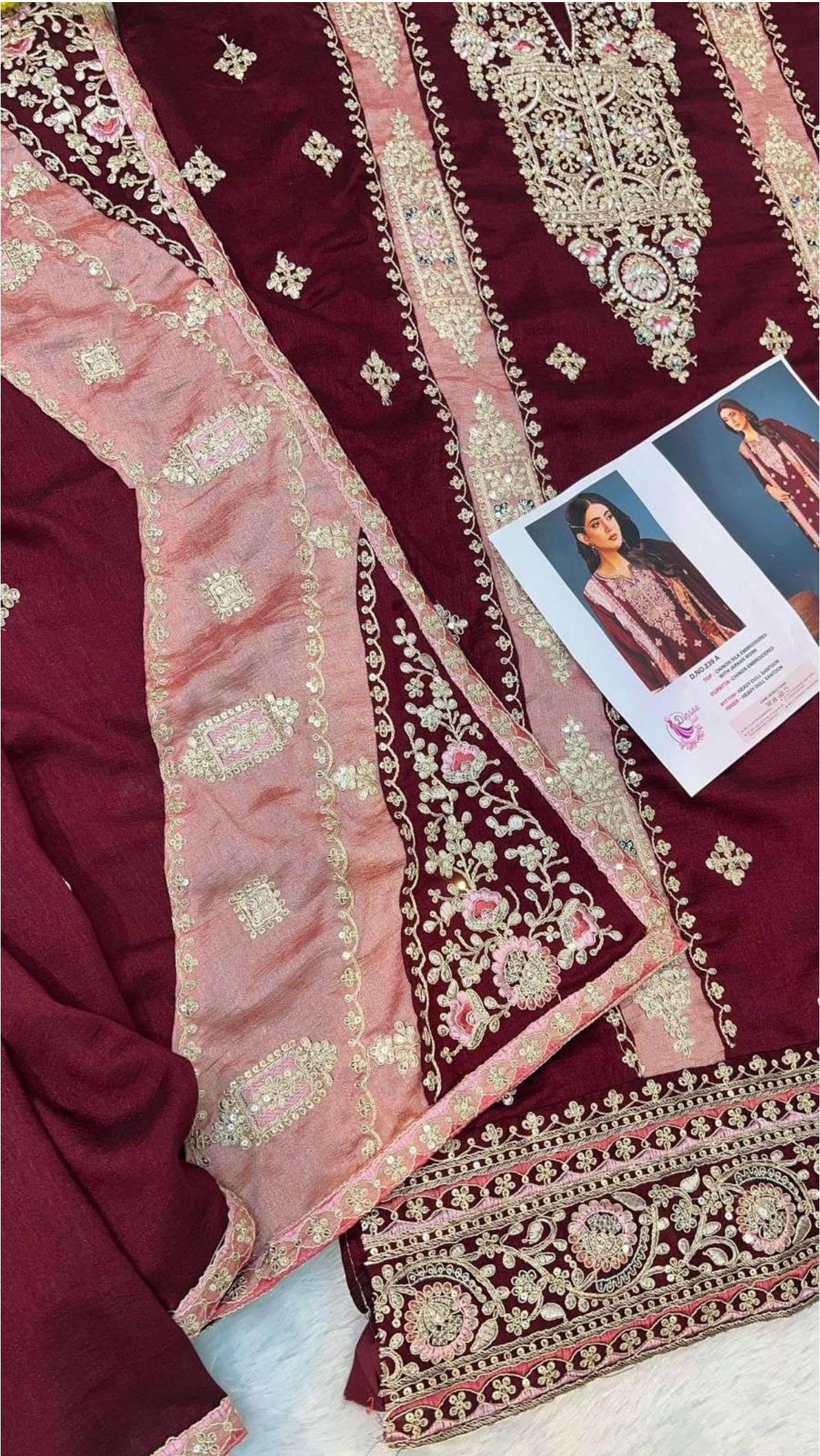
INNER - HEAVY DULL SANTOON



CARE INTRUCTIONS

- DRY CLEAN RECOMMENDED
- DO NOT OVEREXPOSE DAMP FABRIC TO STRONG SUNLIGHT
- DO NOT USE ANYTYPE OF BLEACH OR STAIN REMOVING CHEMICALS
- IRON AT MODERATE TEMPERATURE







D.NO.239 B

**TOP - CHINON SILK EMBROIDERED
WITH JARKAN WORK**

DUPATTA- CHINON EMBROIDERED

BOTTOM- HEAVY DULL SANTOON

INNER - HEAVY DULL SANTOON



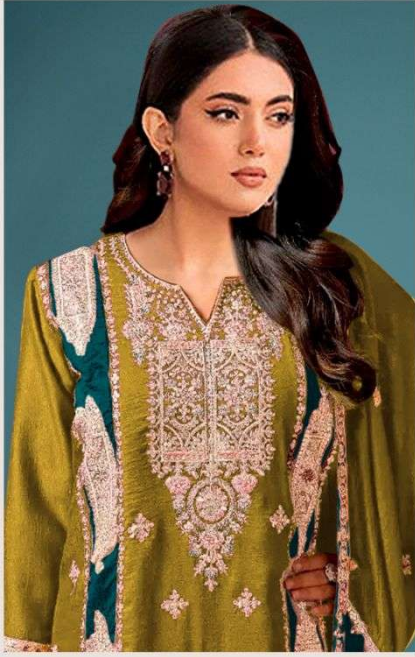
CARE INTRUCTIONS

- DRY CLEAN RECOMMENDED
- DO NOT OVEREXPOSE DAMP FABRIC TO STRONG SUNLIGHT
- DO NOT USE ANYTYPE OF BLEACH OR STAIN REMOVING CHEMICALS
- IRON AT MODERATE TEMPERATURE





*Dinsaa
Sutt*



D.NO.239 C

**TOP - CHINON SILK EMBROIDERED
WITH JARKAN WORK**

DUPATTA- CHINON EMBROIDERED

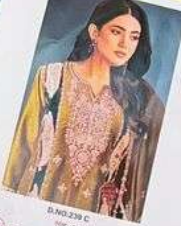
**BOTTOM- HEAVY DULL SANTOON
INNER - HEAVY DULL SANTOON**



CARE INTRUCTIONS

- DRY CLEAN RECOMMENDED
- DO NOT OVEREXPOSE DAMP FABRIC TO STRONG SUNLIGHT
- DO NOT USE ANYTYPE OF BLEACH OR STAIN REMOVING CHEMICALS
- IRON AT MODERATE TEMPERATURE





D.NO.239 C
FOR UNUSUAL BRANDED WITH ABAJIA
DUPPI TO CHAIN EMBROIDERED
WITHIN 20-30 DAYS SHAWER
WASH - WASH IN HAND
MADE IN PAKISTAN
DIPAK



D.No 239 A



D.No 239-B



D.No 239-C