



#R-548-A



TOP- ORGENZA WORK WITH EMBROIDERY  
BOTTOM-DULL SANTOON  
DUPATTA - ORGENZA WORK WITH EMBROIDERY

- Ⓟ DRY CLEAN ONLY.
- ⊗ DO NOT USE ANY BLEACH OR STAIN REMOVING CHEMICAL.
- ☎ IRON THE FABRIC AT MODERATE TEMPERATURE.





#R-548-A



TOP- ORGENZA WORK WITH EMBROIDERY  
BOTTOM-DULL SANTOON  
DUPATTA - ORGENZA WORK WITH EMBROIDERY

- Ⓟ DRY CLEAN ONLY.
- ⓧ DO NOT USE ANY BLEACH OR STAIN REMOVING CHEMICAL.
- ☎ IRON THE FABRIC AT MODERATE TEMPERATURE.





*Kamoha*  
#R-548

TOP- ORGENZA WORK WITH EMBROIDERY  
BOTTOM-NEEL SANGTOOL  
DUPATTA- ORGENZA WORK WITH EMBROIDERY

BYE CLAN ONLY  
DO NOT USE ANY BLEACH OR STAIN REMOVAL CHEMICAL  
ON THE FABRIC AT HOME OR IN THE WASHING MACHINE





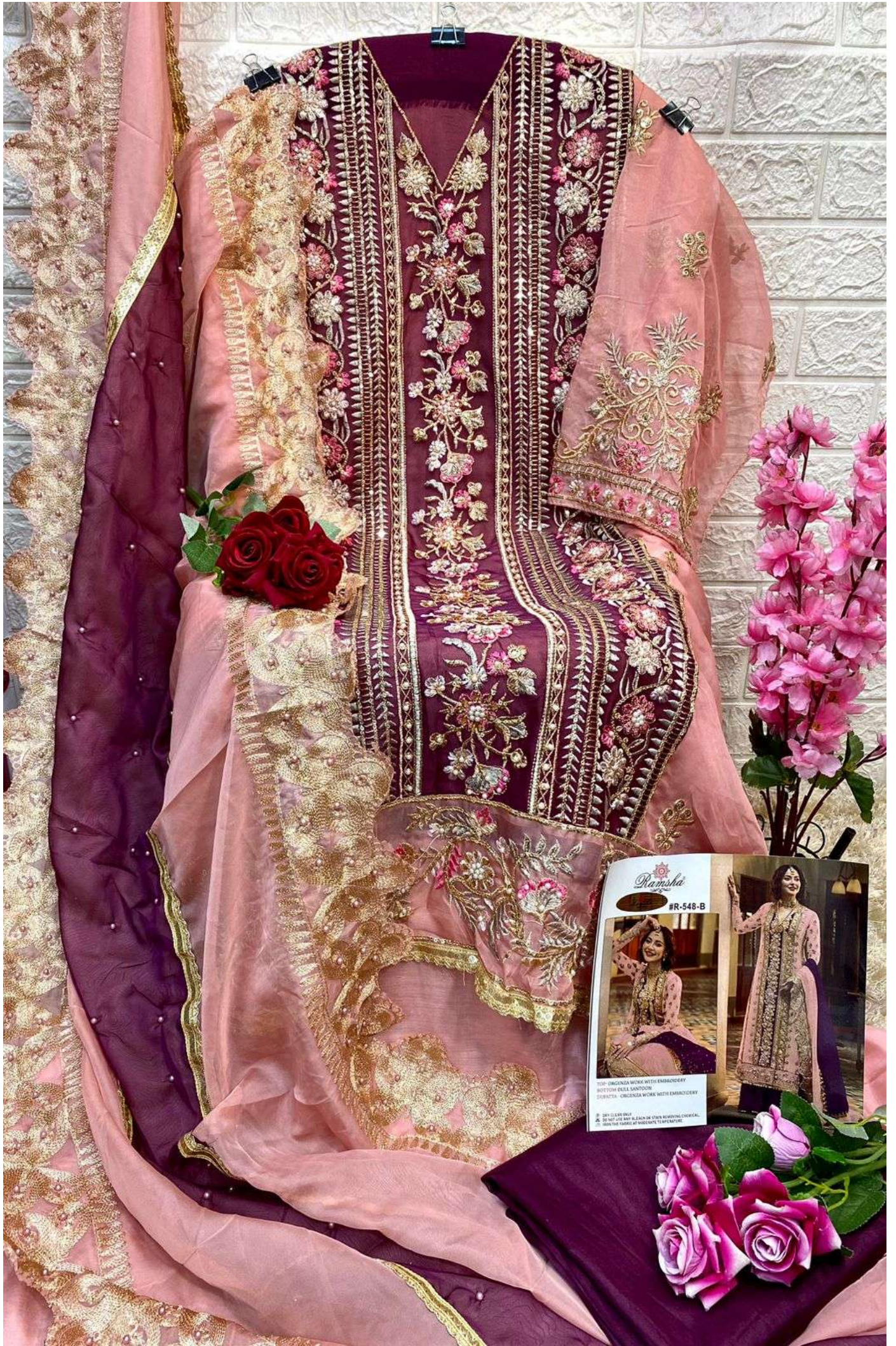
#R-548-B



TOP- ORGENZA WORK WITH EMBROIDERY  
BOTTOM-DULL SANTOON  
DUPATTA - ORGENZA WORK WITH EMBROIDERY

Ⓟ DRY CLEAN ONLY.  
ⓧ DO NOT USE ANY BLEACH OR STAIN REMOVING CHEMICAL.  
☎ IRON THE FABRIC AT MODERATE TEMPERATURE.





*Ranasha*  
#R-548-B

TOP - ORGANZA WORK WITH EMBROIDERY  
BOTTOM - FUSION SANSLOOM  
DUPATTA - ORGANZA WORK WITH EMBROIDERY

WASH IN COLD WATER  
DO NOT USE HOT BLEACH OR STAIN REMOVING CHEMICAL.  
IRON THE FABRIC AT MEDIUM TEMPERATURE.





#R-548-C



TOP- ORGENZA WORK WITH EMBROIDERY  
BOTTOM-DULL SANTOON  
DUPATTA - ORGENZA WORK WITH EMBROIDERY

Ⓟ DRY CLEAN ONLY.  
ⓧ DO NOT USE ANY BLEACH OR STAIN REMOVING CHEMICAL.  
Ⓛ IRON THE FABRIC AT MODERATE TEMPERATURE.





**Kansha**  
#R-548-C

TOP- ORGANDA WORK WITH EMBROIDERY  
BOTTOM FULL SATEEN  
DOROTA - ORGANDA WORK WITH EMBROIDERY

DPI 150 GSM ONLY  
DO NOT USE BLEACH OR STAIN REMOVING CHEMICAL  
IRON THE FABRIC AT MEDIUM TEMPERATURE





#R-548-D



TOP- ORGENZA WORK WITH EMBROIDERY  
BOTTOM-DULL SANTOON  
DUPATTA - ORGENZA WORK WITH EMBROIDERY

Ⓟ DRY CLEAN ONLY.  
ⓧ DO NOT USE ANY BLEACH OR STAIN REMOVING CHEMICAL.  
Ⓛ IRON THE FABRIC AT MODERATE TEMPERATURE.





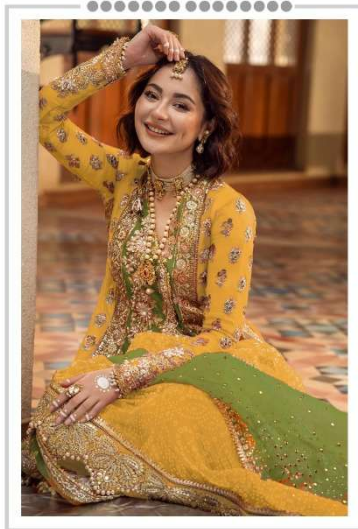
*Ramsha*  
#R-548-D

TOP - GORGONA WORK WITH EMBROIDERY  
BOTTOM - GORGONA WORK WITH EMBROIDERY  
DUPATTA - GORGONA WORK WITH EMBROIDERY

DO NOT USE BLEACH OR STAIN REMOVAL CHEMICALS  
WASH IN COLD WATER AT MODERATE TEMPERATURE



Ramsha®  
548-NX



Ramsha®  
548-NX



#R-548-A



#R-548-B



#R-548-C



#R-548-D