



### SARA-05-G

Fabric:  
Embroidered georgette front with sequins work  
Embroidered georgette sleeves  
Embroidered tissue sleeves lace  
Embroidered tissue ghera lace  
Embroidered chiffon dupatta  
dull santoon trouser  
Embroidered tissue trouser lace





## SARA-05-A

Fabric:

- Embroidered georgette front with sequins work
- Embroidered georgette sleeves
- Embroidered tissue sleeves lace
- Embroidered tissue ghera lace
- Embroidered chiffon dupatta
- dull santoon trouser
- Embroidered tissue trouser lace



hand wash



don't bleach



don't dry in the dryer



don't dry clean



don't iron



don't press out



## SARA-05-B

### Fabric:

Embroidered georgette front with sequins work  
Embroidered georgette sleeves  
Embroidered tissue sleeves lace  
Embroidered tissue ghera lace  
Embroidered chiffon dupatta  
dull santoon trouser  
Embroidered tissue trouser lace



hand wash only



don't bleach



don't dry in the dryer



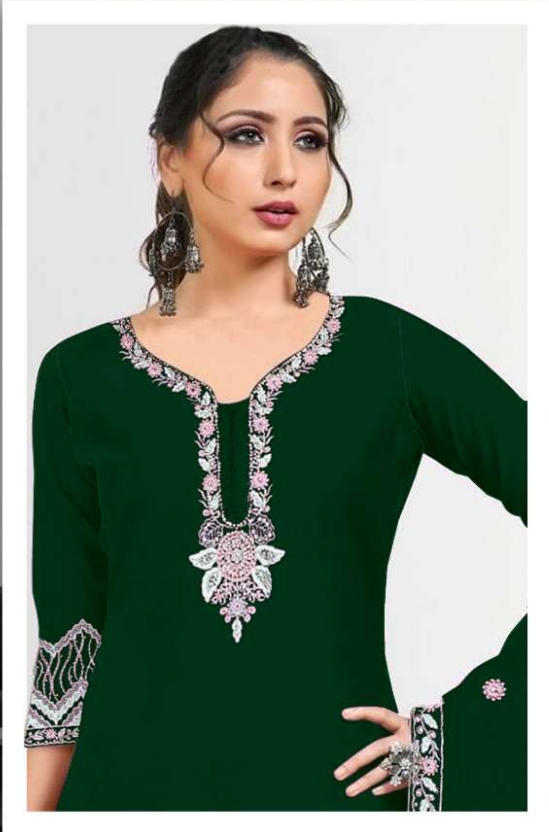
don't dry clean



don't iron



don't press out



### SARA-05-C

Fabric:  
Embroidered georgette front with sequins work  
Embroidered georgette sleeves  
Embroidered tissue sleeves lace  
Embroidered tissue ghera lace  
Embroidered chiffon dupatta  
dull santoon trouser  
Embroidered tissue trouser lace





## SARA-05-D

Fabric:

- Embroidered georgette front with sequins work
- Embroidered georgette sleeves
- Embroidered tissue sleeves lace
- Embroidered tissue ghera lace
- Embroidered chiffon dupatta
- dull santoon trouser
- Embroidered tissue trouser lace



hand wash



don't bleach



don't dry clean



don't iron



don't press out



## SARA-05-E

**Fabric:**

- Embroidered georgette front with sequins work
- Embroidered georgette sleeves
- Embroidered tissue sleeves lace
- Embroidered tissue ghera lace
- Embroidered chiffon dupatta
- dull santoon trouser
- Embroidered tissue trouser lace



hand wash



don't bleach



don't dry in the dryer



don't dry clean



don't iron



don't press out



## SARA-05-F

Fabric:

- Embroidered georgette front with sequins work
- Embroidered georgette sleeves
- Embroidered tissue sleeves lace
- Embroidered tissue ghera lace
- Embroidered chiffon dupatta
- dull santoon trouser
- Embroidered tissue trouser lace



hand wash



don't bleach



don't dry in the dryer



don't dry clean



don't iron



don't press out



## SARA-05-G

Fabric:

- Embroidered georgette front with sequins work
- Embroidered georgette sleeves
- Embroidered tissue sleeves lace
- Embroidered tissue ghera lace
- Embroidered chiffon dupatta
- dull santoon trouser
- Embroidered tissue trouser lace



hand wash



don't bleach



don't dry clean



don't iron



don't press out





### SARA-05-H

Fabric:  
Embroidered georgette front with sequins work  
Embroidered georgette sleeves  
Embroidered tissue sleeves lace  
Embroidered tissue ghera lace  
Embroidered chiffon dupatta  
dull santoon trouser  
Embroidered tissue trouser lace





## SARA-05-I

Fabric:  
Embroidered georgette front with sequins work  
Embroidered georgette sleeves  
Embroidered tissue sleeves lace  
Embroidered tissue ghera lace  
Embroidered chiffon dupatta  
dull santoon trouser  
Embroidered tissue trouser lace





## SARA-05-J

Fabric:  
Embroidered georgette front with sequins work  
Embroidered georgette sleeves  
Embroidered tissue sleeves lace  
Embroidered tissue ghera lace  
Embroidered chiffon dupatta  
dull santoon trouser  
Embroidered tissue trouser lace





Fabric:  
Embroidered georgette front  
with sequins work  
Embroidered georgette sleeves  
Embroidered tissue sleeves lace  
Embroidered tissue ghera lace  
Embroidered chiffon dupatta  
dull santoon trouser  
Embroidered tissue trouser lace



SARA-05-A



SARA-05-B



SARA-05-C



SARA-05-D



SARA-05-E



SARA-05-F



SARA-05-G



SARA-05-H



SARA-05-I



SARA-05-J