





D.NO.265 A

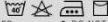


TOP - Cotton With Embroidery Work

DUPATTA- Kota Chex With Embroidery Workk

BOTTOM - Cotton

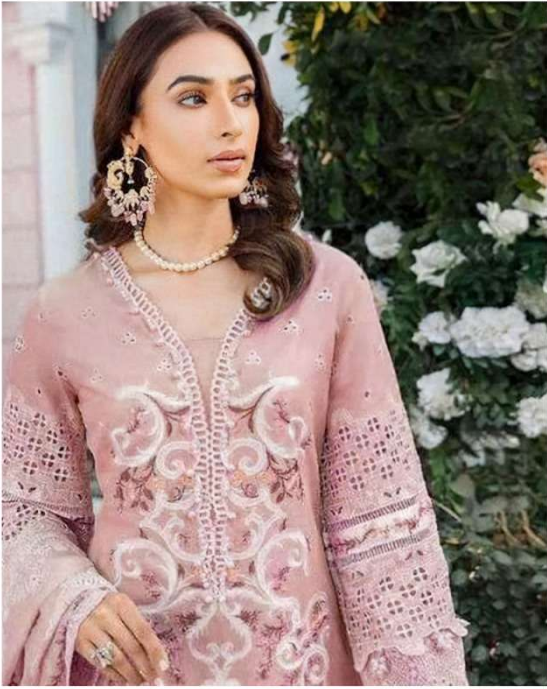
CARE INTRUCTIONS



- DRY CLEAN RECOMMENDED
- DO NOT OVEREXPOSE DAMP FABRIC TO STRONG SUNLIGHT
- DO NOT USE ANYTYPE OF BLEACH OR STAIN REMOVING CHEMICALS
- IRON AT MODERATE TEMPERATURE







D.NO.265 B



TOP - Cotton With Embroidery Work

DUPATTA- Kota Chex With Embroidery Workk

BOTTOM - Cotton

CARE INTRUCTIONS

- DRY CLEAN RECOMMENDED
- DO NOT USE ANYTYPE OF BLEACH OR STAIN REMOVING CHEMICALS
- DO NOT OVEREXPOSE DAMP FABRIC TO STRONG SUNLIGHT
- IRON AT MODERATE TEMPERATURE





D.NO.295 B

TOP - Cotton With Embroidery Work
DUPETTA - Kala Chas With Embroidery Work
BOTTOM - Cotton



D.NO.265 C

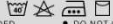


TOP - Cotton With Embroidery Work

DUPATTA- Kota Chex With Embroidery Workk

BOTTOM - Cotton

CARE INTRUCTIONS



- DRY CLEAN RECOMMENDED
- DO NOT USE ANYTYPE OF BLEACH OR STAIN REMOVING CHEMICALS
- DO NOT OVEREXPOSE DAMP FABRIC TO STRONG SUNLIGHT
- IRON AT MODERATE TEMPERATURE





D.NO.265 D



TOP - Cotton With Embroidery Work

DUPATTA- Kota Chex With Embroidery Workk

BOTTOM - Cotton

CARE INTRUCTIONS

- DRY CLEAN RECOMMENDED
- DO NOT USE ANYTYPE OF BLEACH OR STAIN REMOVING CHEMICALS
- DO NOT OVEREXPOSE DAMP FABRIC TO STRONG SUNLIGHT
- IRON AT MODERATE TEMPERATURE





D.NO.285 D

TOP: Cotton With F.
DUPATTA: Silk C1
BOTTOM: Cotton



TOP - Cotton With Embroidery Work

DUPATTA- Kota Chex With Embroidery Workk

BOTTOM - Cotton



D.No | 265-A



D.No | 265-B



D.No | 265-C



D.No | 265-D