

A woman with her hair pulled back and a white flower in it, wearing a long yellow dress with floral embroidery, stands next to a large white vase filled with pink and orange roses. The scene is set indoors with a light-colored wall and a window in the background.

Shree[®]
FABS



READY MADE
COLLECTION



R-1297 A



R-1297 B



R-1297 C



R-1297 D





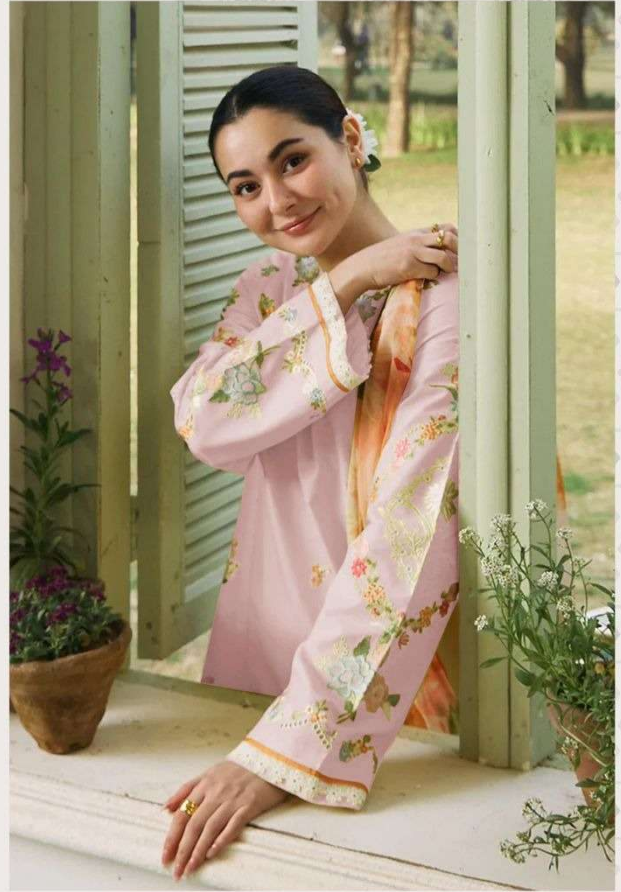
R-1297 D



READY MADE
COLLECTION

CARE INSTRUCTIONS

- DO NOT USE ANY TYPE OF BLEACH OR STAIN REMOVING CHEMICALS
- DO NOT OVER EXPOSE DAMP FABRIC TO STRONG SUNLIGHT
- IRON AT MODERATE TEMPERATURE



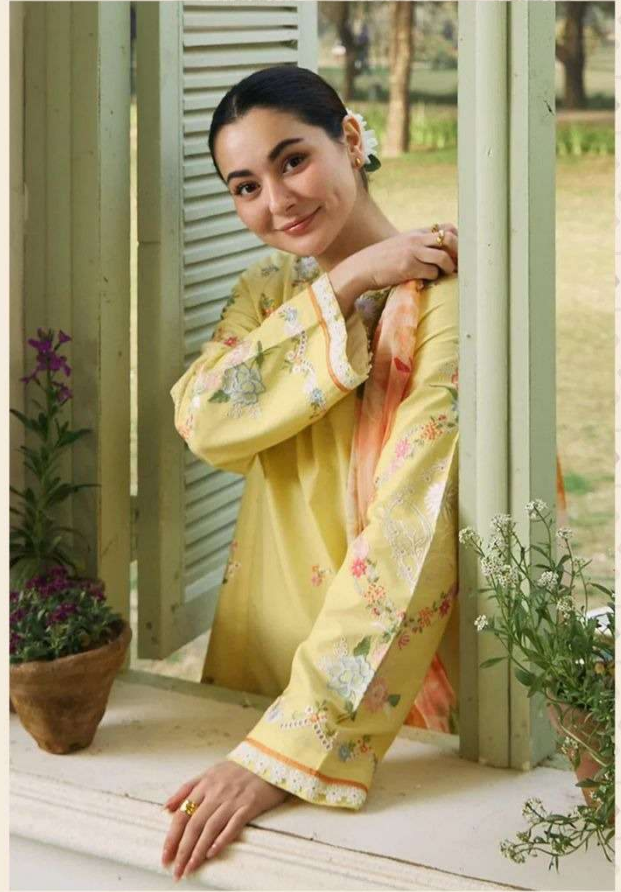
R-1297 C



READY MADE
COLLECTION

CARE INSTRUCTIONS

- DO NOT USE ANY TYPE OF BLEACH OR STAIN REMOVING CHEMICALS
- DO NOT OVER EXPOSE DAMP FABRIC TO STRONG SUNLIGHT
- IRON AT MODERATE TEMPERATURE



R-1297 A



READY MADE
COLLECTION

CARE INSTRUCTIONS

- DO NOT USE ANY TYPE OF BLEACH OR STAIN REMOVING CHEMICALS
- DO NOT OVER EXPOSE DAMP FABRIC TO STRONG SUNLIGHT
- IRON AT MODERATE TEMPERATURE



R-1297 B



READY MADE
COLLECTION

CARE INSTRUCTIONS

- DO NOT USE ANY TYPE OF BLEACH OR STAIN REMOVING CHEMICALS
- DO NOT OVER EXPOSE DAMP FABRIC TO STRONG SUNLIGHT
- IRON AT MODERATE TEMPERATURE