

A close-up photograph of a woman wearing a vibrant blue and purple silk saree with intricate gold and red patterns. She is adorned with traditional Indian jewelry, including a gold headband, large pearl earrings, and a ring with a red gemstone. Her hand is resting near her chin, and she has a serene expression.

RAPATHTM
"The Secret of Style"

KIYA PAITHANI SILK

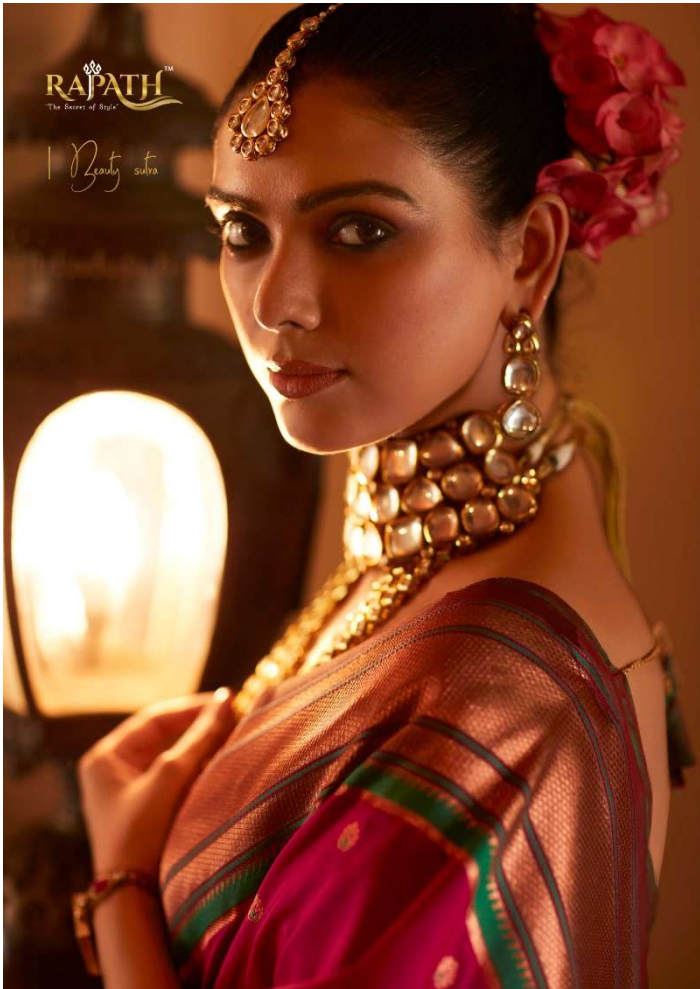
• PESHWAI PAITHNI SILK •



RAPATH™
"The Secret of Style"

Celebrate in style | 97001







The fantasy ahead | 97004



RAPATH
The Secret of Style



Statement Gorgeous | 97005



RAJPATH™
"The Secret of Style"



Ethnic simplicity | 97006



PESHWAI
PAITHNI SILK

Opulent you | 97007

RAPATH™
"The Rites of Style"





Bright glory

| 97008



PESHWAI
PAITHNI SILK



| 97001 |



| 97002 |



| 97003 |



| 97004 |



| 97005 |



| 97006 |



| 97007 |



| 97008 |

RAJPATHTM
"The Secret of Style"



KIYA PAITHANI SILK