

LILY & LALI
A PRODUCT OF HANA GROUP
MODERN WOMAN
This elegant red salwar suit is designed for the modern woman who values both style and comfort. Crafted from high-quality fabric.



THE VIBRANT

The vibrant yellow hue adds a cheerful touch, while the comfortable fit ensures ease of movement.



LILY & LALI
WOMEN'S WEAR
A collection of vibrant colors

22902



PERFECT CHOICE

This exquisite blue embroidered cotton salwar kameez combines elegance and comfort, making it a perfect choice for both casual and festive occasions.

22903



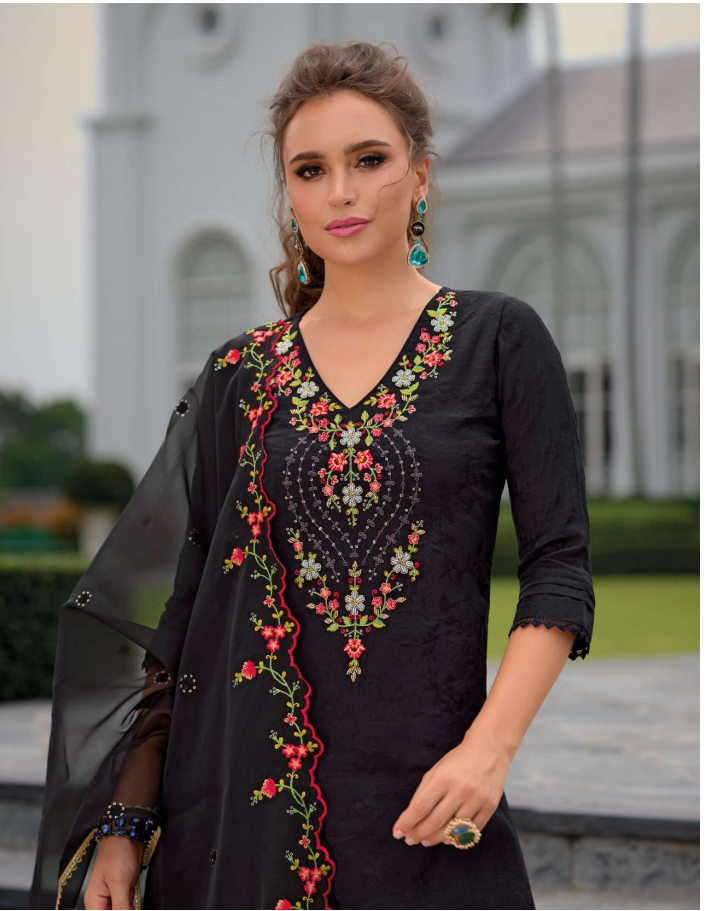
LILY & LALI
A LILY & LALI GROUP
PRODUCT OF LILY & LALI GROUP



LILY&LALI[®]
GULS PRIDE
A PRODUCT OF FRIENDS GROUP



22905





THE VIBRANT

The vibrant yellow hue adds a cheerful touch, while the comfortable fit ensures ease of movement



LILY & LALI[®]
GULS PRIDE
A PRODUCT OF FICHA GROUP

22906



22901



22902



22903



22904



22905



22906

LILY&LALI®
GULS PRIDE
A PRODUCT OF MIRAAN GROUP

Miraan
VOL - 3