



DS-178-A

**Top- ORGANZA EMBROIDERY WITH
APLIQUE & PEARL WORK**

Bottom/Iner- SANTOON

Dupatta- ORGANZA EMBROIDERY

WASHING INSTRUCTIONS
DO NOT USE ANY TYPE OF BLEACH OR FORM-BUILDING CHEMICALS
BEFORE DYEING. THE FABRIC SHOULD BE SOAKED IN WATER
ALL COMPONENTS SEPARATELY FOR 15 MINUTES
DO NOT USE HOT IRON OR TUMBLE DRYER. PRESS TO AVOID OF MARKS
WASH COLOURED AND WHITE FABRICS SEPARATELY
IRON COLOURED FABRICS AT LOW TEMPERATURE. IRON COLOURED FABRICS
BEFORE WASHING AND DRYING. DO NOT WASH IN HOT WATER.





DS-178-A

**Top- ORGANZA EMBROIDERY WITH
APLIQUE & PEARL WORK**

Bottom/Iner- SANTOON

Dupatta- ORGANZA EMBROIDERY

WASHING INSTRUCTIONS
DO NOT USE ANY TYPE OF BLEACH OR FORMALIN OR DYEING CHEMICALS
BEFORE CUTTING THE FABRIC SHOULD BE SOAKED IN WATER
ALL COMPONENTS WASHED FOR 15 MINUTES
DO NOT USE HOT IRON OR PRESSURE FROM IRON TO AVOID OF MARKS
WASH COLOURED AND WHITE FABRICS SEPARATELY
IRON COLOURED FABRICS SHOULD BE IRONED FROM THE REVERSE SIDE
BEFORE WASHING AND PRESSING ARE NOT ALLOWED





DS-178-A
ORANGE EMBROIDERY WITH ATLAS & PEARL WORK
Bottom / Size: FANTOM
Kapatid: BANGKAY KINO



DS-178-B

**Top- ORGANZA EMBROIDERY WITH
APLIQUE & PEARL WORK**

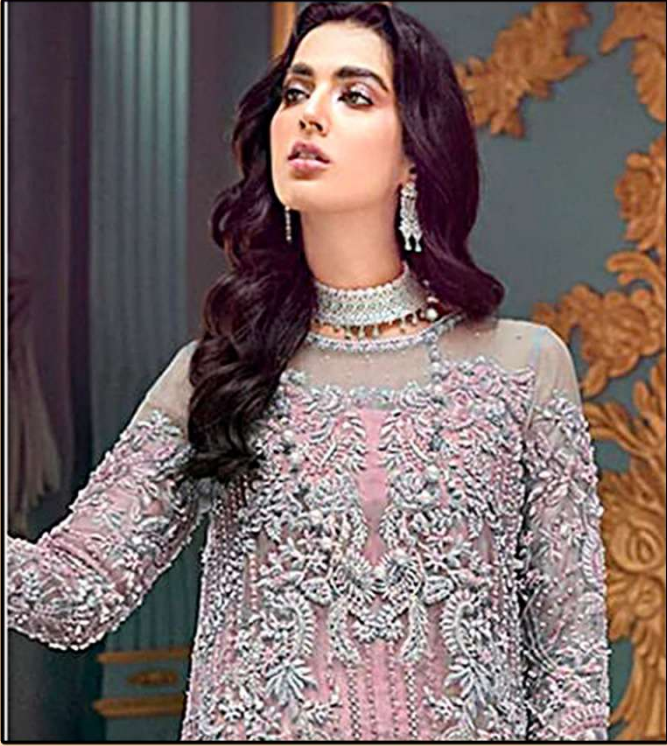
Bottom/Iner- SANTOON

Dupatta- ORGANZA EMBROIDERY

WASHING INSTRUCTIONS
DO NOT USE ANY TYPE OF BLEACH OR FORMALDEHYDE CHEMICALS
BEFORE CUTTING THE FABRIC SHOULD BE SOAKED IN WATER
ALL COMPONENTS WASHED FOR 15 MINUTES
DO NOT USE HOT IRON OR PRESSURE FROM IRON TO AVOID OF MARKS
WASH COLOURED AND WHITE FABRICS SEPARATELY
IRON COLOURED FABRICS SHOULD BE IRONED FROM INSIDE TO OUTSIDE
DRESSING ROOMS AND ACCESSORIES ARE NOT INCLUDED







DS-178-C

**Top- ORGANZA EMBROIDERY WITH
APLIQUE & PEARL WORK**

Bottom/Iner- SANTOON

Dupatta- ORGANZA EMBROIDERY

WASHING INSTRUCTIONS
 DO NOT USE ANY TYPE OF BLEACH OR FORMALDEHYDE CHEMICALS
 BEFORE DYEING FABRIC SHOULD BE SOAKED IN WATER
 ALL COMPONENTS WASH FOR 15 MINUTES
 DO NOT USE HOT IRON OR THIRSTERON PRESS TO AVOID OF MARKS
 WASH COLOURED AND WHITE FABRICS SEPARATELY
 IRON CLOTHES BY WASHABLE THERMOPREHE FOLDING CLOTHES SUNDRY
 DRYING AND ACCESSORIES ARE NOT ALLOWED







DS-178-D

**Top- ORGANZA EMBROIDERY WITH
APLIQUE & PEARL WORK**

Bottom/Iner- SANTOON

Dupatta- ORGANZA EMBROIDERY

WASHING INSTRUCTIONS
 DO NOT USE ANY TYPE OF BLEACH OR SOAKING CHEMICALS
 BEFORE DYEING FABRIC SHOULD BE SOAKED IN WATER
 ALL COMPONENTS FOR 15 MINUTES
 DO NOT USE HOT IRON OR TUMBLE DRYER TO AVOID OF MARKS
 WASH COLOURED AND WHITE FABRICS SEPARATELY
 IRON CLOTHES AT MODERATE TEMPERATURE TO AVOID DAMAGE TO FABRIC
 DRYING IN SHADING AND ACCESSORIES ARE NOT ALLOWED







**Top- ORGANZA EMBROIDERY WITH
APLIQUE & PEARL WORK**

Bottom/Iner- SANTOON

Dupatta- ORGANZA EMBROIDERY



DS-178-A



DS-178-B



DS-178-C



DS-178-D

