

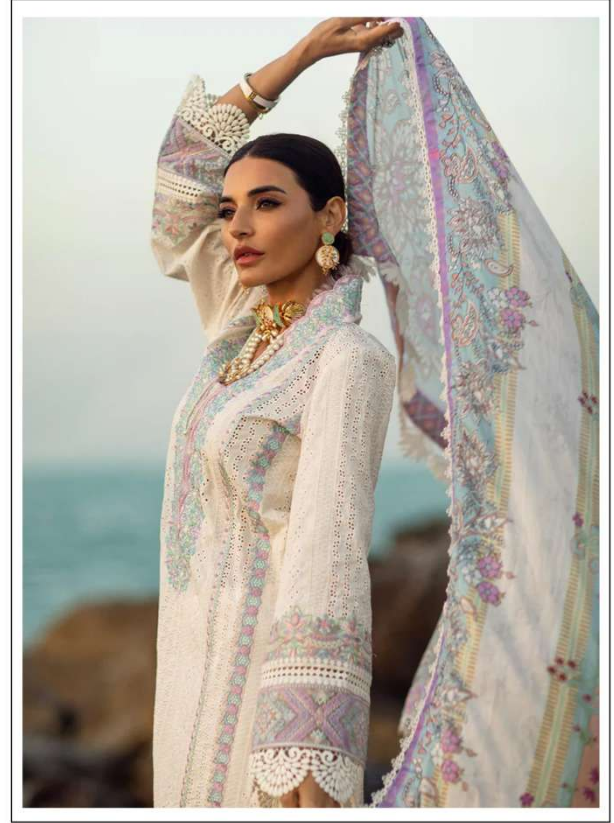
**TOP- CAMBRIC COTTON BORING WORK
WITH HEAVY EMBROIDERY**

M-218 A

BOTTOM/INNER- SEMI COTTON

**DUPATTA/NET- TABBY SILK DIGITAL
PRINTED/ MAL MAL DIGITAL PRINTED DUPTA**

- ☉ DRY CLEAN ONLY.
- ✗ DO NOT USE ANY BLEACH OR STAIN REMOVING CHEMICAL.
- ☎ IRON THE FABRIC AT MODERATE TEMPERATURE.



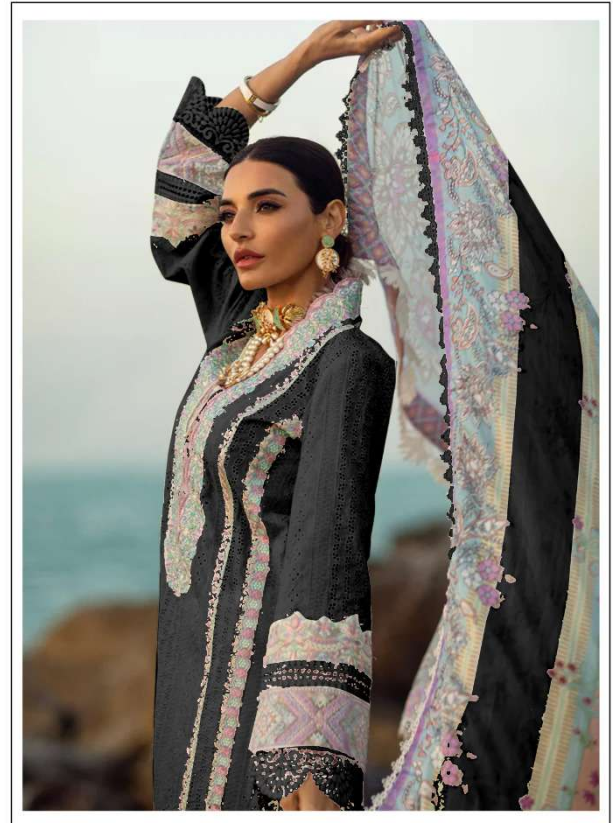
**TOP- CAMBRIC COTTON BORING WORK
WITH HEAVY EMBROIDERY**

M-218 A

BOTTOM/INNER- SEMI COTTON

**DUPATTA/NET- TABBY SILK DIGITAL
PRINTED/ MAL MAL DIGITAL PRINTED DUPTA**

- ☉ DRY CLEAN ONLY.
- ✘ DO NOT USE ANY BLEACH OR STAIN REMOVING CHEMICAL.
- ☎ IRON THE FABRIC AT MODERATE TEMPERATURE.



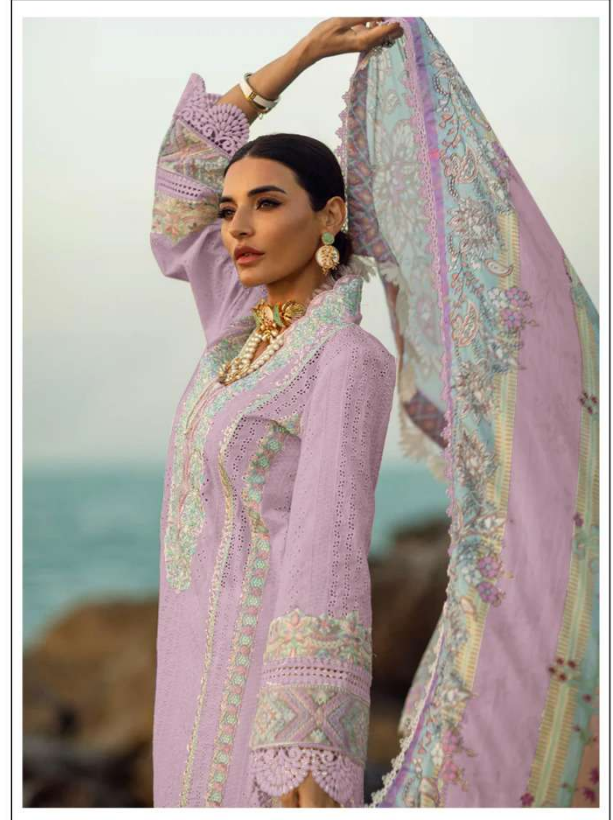
**TOP- CAMBRIC COTTON BORING WORK
WITH HEAVY EMBROIDERY**

M-218 B

BOTTOM/INNER- SEMI COTTON

**DUPATTA/NET- TABBY SILK DIGITAL
PRINTED/ MAL MAL DIGITAL PRINTED DUPTA**

- ☉ DRY CLEAN ONLY.
- ✘ DO NOT USE ANY BLEACH OR STAIN REMOVING CHEMICAL.
- ☎ IRON THE FABRIC AT MODERATE TEMPERATURE.



**TOP- CAMBRIC COTTON BORING WORK
WITH HEAVY EMBROIDERY**

M-218 C

BOTTOM/INNER- SEMI COTTON

**DUPATTA/NET- TABBY SILK DIGITAL
PRINTED/ MAL MAL DIGITAL PRINTED DUPTA**

- ☉ DRY CLEAN ONLY.
- ✗ DO NOT USE ANY BLEACH OR STAIN REMOVING CHEMICAL.
- ☎ IRON THE FABRIC AT MODERATE TEMPERATURE.



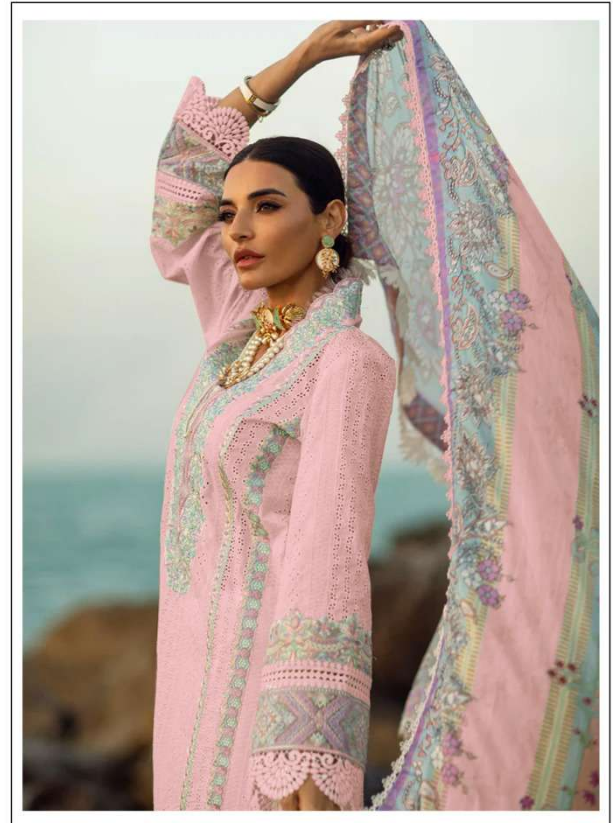
**TOP- CAMBRIC COTTON BORING WORK
WITH HEAVY EMBROIDERY**

M-218 D

BOTTOM/INNER- SEMI COTTON

**DUPATTA/NET- TABBY SILK DIGITAL
PRINTED/ MAL MAL DIGITAL PRINTED DUPTA**

- ☉ DRY CLEAN ONLY.
- ✘ DO NOT USE ANY BLEACH OR STAIN REMOVING CHEMICAL.
- ☎ IRON THE FABRIC AT MODERATE TEMPERATURE.



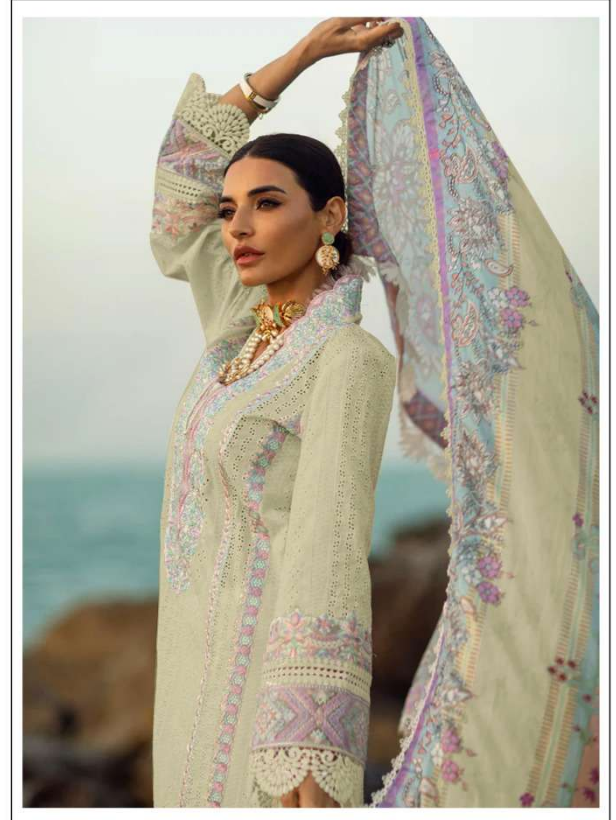
**TOP- CAMBRIC COTTON BORING WORK
WITH HEAVY EMBROIDERY**

M-218 E

BOTTOM/INNER- SEMI COTTON

**DUPATTA/NET- TABBY SILK DIGITAL
PRINTED/ MAL MAL DIGITAL PRINTED DUPTA**

- ☉ DRY CLEAN ONLY.
- ✗ DO NOT USE ANY BLEACH OR STAIN REMOVING CHEMICAL.
- ☼ IRON THE FABRIC AT MODERATE TEMPERATURE.



**TOP- CAMBRIC COTTON BORING WORK
WITH HEAVY EMBROIDERY**

M-218 F

BOTTOM/INNER- SEMI COTTON

**DUPATTA/NET- TABBY SILK DIGITAL
PRINTED/ MAL MAL DIGITAL PRINTED DUPTA**

- ☉ DRY CLEAN ONLY.
- ✘ DO NOT USE ANY BLEACH OR STAIN REMOVING CHEMICAL.
- ☎ IRON THE FABRIC AT MODERATE TEMPERATURE.

