



TOP- CAMBRIC COTTON WITH HEVY EMBROIDERY

M-234

BOTTOM/INNER- SEMILOWN

DUPATTA/NET- HEVY NET WITH EMBROIDERY WORK

- ☉ DRY CLEAN ONLY.
- ✘ DO NOT USE ANY BLEACH OR STAIN REMOVING CHEMICAL.
- ☎ IRON THE FABRIC AT MODERATE TEMPERATURE.



TOP- CREMRICK COTTON WITH HEVY EMBROIDERY M-230

BOTTOM/INNER- SEMILOWN

DUPATTA/NET- HEVY NET WITH EMBROIDERY WORK



-  **DRY CLEAN ONLY.**
-  **DO NOT USE ANY BLEACH OR STAIN REMOVING CHEMICAL.**
-  **IRON THE FABRIC AT MODERATE TEMPERATURE.**



TOP- CAMBRIC COTTON WITH HEVY EMBROIDERY

M-231

BOTTOM/INNER- SEMILOWN

DUPATTA/NET- HEVY NET WITH EMBROIDERY WORK

- ☉ DRY CLEAN ONLY.
- ✘ DO NOT USE ANY BLEACH OR STAIN REMOVING CHEMICAL.
- ☎ IRON THE FABRIC AT MODERATE TEMPERATURE.



TOP- CAMBRIC COTTON WITH HEVY EMBROIDERY

M-232

BOTTOM/INNER- SEMILOWN

DUPATTA/NET- HEVY NET WITH EMBROIDERY WORK

-  DRY CLEAN ONLY.
-  DO NOT USE ANY BLEACH OR STAIN REMOVING CHEMICAL.
-  IRON THE FABRIC AT MODERATE TEMPERATURE.



TOP- CAMBRIC COTTON WITH HEVY EMBROIDERY

M-233

BOTTOM/INNER- SEMILOWN

DUPATTA/NET- PRINTED ORGENZA WITH EMBROIDERY WORK

-  DRY CLEAN ONLY.
-  DO NOT USE ANY BLEACH OR STAIN REMOVING CHEMICAL.
-  IRON THE FABRIC AT MODERATE TEMPERATURE.



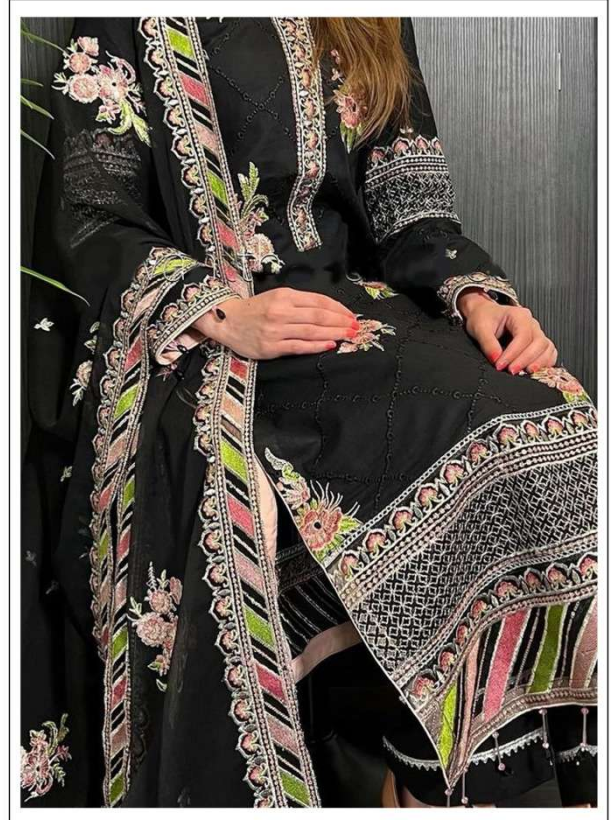
TOP- CAMBRIC COTTON WITH HEVY EMBROIDERY

M-234

BOTTOM/INNER- SEMILOWN

DUPATTA/NET- HEVY NET WITH EMBROIDERY WORK

- ☉ DRY CLEAN ONLY.
- ✘ DO NOT USE ANY BLEACH OR STAIN REMOVING CHEMICAL.
- ☎ IRON THE FABRIC AT MODERATE TEMPERATURE.



TOP- CAMBRIC COTTON WITH HEVY EMBROIDERY

M-235

BOTTOM/INNER- SEMILOWN

DUPATTA/NET- HEVY NET WITH EMBROIDERY WORK

- ☉ DRY CLEAN ONLY.
- ☒ DO NOT USE ANY BLEACH OR STAIN REMOVING CHEMICAL.
- ☒ IRON THE FABRIC AT MODERATE TEMPERATURE.



TOP- CAMBRIC COTTON WITH HEVY EMBROIDERY

M-235 B

BOTTOM/INNER- SEMILOWN

DUPATTA/NET- HEVY NET WITH EMBROIDERY WORK

-  DRY CLEAN ONLY.
-  DO NOT USE ANY BLEACH OR STAIN REMOVING CHEMICAL.
-  IRON THE FABRIC AT MODERATE TEMPERATURE.