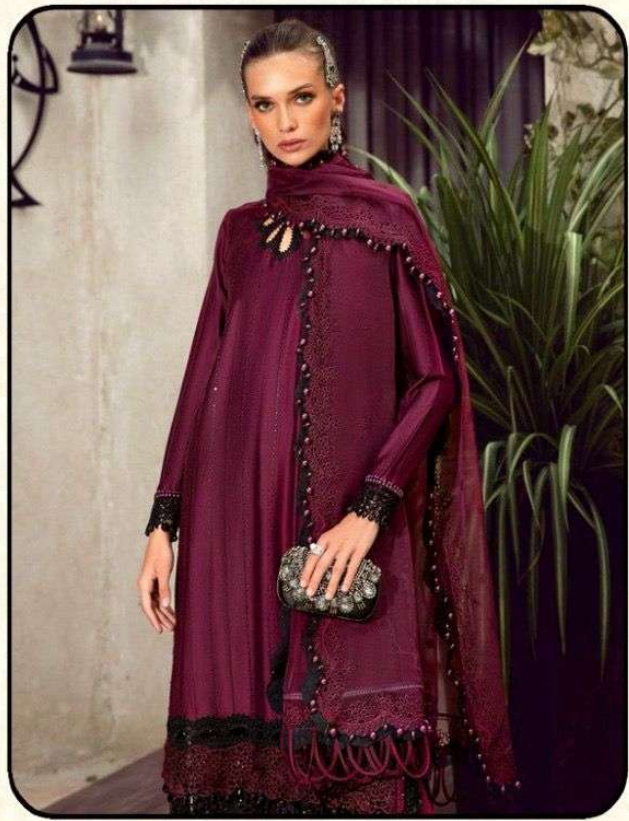




**Bareezé®**  
*Embroidered Classics*  
D.NO.1020

TOP - SATIN GEORGETTE  
BOTTOM-INNER - HEAVY SANTOON  
DUPATTA - BUTTERFLY NET



**WASHING INSTRUCTIONS**  
DO NOT USE ANY TYPE OF BLEACH OR STRAIN REMOVING CHEMICALS  
BEFORE CUTTING / STITCHING. FABRIC SHOULD BE SOAKED IN WATER  
(ALL COMPONENTS SEPARATELY ) FOR 15 MINUTES  
DO NOT KEEP WET FABRIC IN TWISTED FORM IN ORDER TO AVOID COPY MRKS !  
WASH COLOURED AND WHITE FABRICS SEPARATELY  
IRON CLOTHES AT MODERATE TEMPERATURE ! DO NOT DRY FABRIC IN DIRECT SUNLIGHT  
( EXTRA LACES , HANGING AND ACCESSORIES ARE NOT INDUDED)





**Bareezé®**  
*Embroidered Classics*  
D.NO.1020

TOP - SATIN GEORGETTE  
BOTTOM-INNER - HEAVY SANTOON  
DUPATTA - BUTTERFLY NET



**WASHING INSTRUCTIONS**  
DO NOT USE ANY TYPE OF BLEACH OR STRAIN REMOVING CHEMICALS  
BEFORE CUTTING / STITCHING. FABRIC SHOULD BE SOAKED IN WATER  
(ALL COMPONENTS SEPARATELY ) FOR 15 MINUTES  
DO NOT KEEP WET FABRIC IN TWISTED FORM IN ORDER TO AVOID COPY MRKS !  
WASH COLOURED AND WHITE FABRICS SEPARATELY  
IRON CLOTHES AT MODERATE TEMPERATURE ! DO NOT DRY FABRIC IN DIRECT SUNLIGHT  
( EXTRA LACES , HANGING AND ACCESSORIES ARE NOT INDUDED)



Bareezé®  
*Embroidered Classics*

