



GARMENT DETAIL

TOP:- GEORGETTE FABRIC WITH
HEAVY WORK

INNER/BOTTOM: - HEAVY SANTOON

DUPATA:- HEAVY NAZNEEN

D.NO : 209-A





GARMENT DETAIL

TOP:- GEORGETTE FABRIC WITH
HEAVY WORK

INNER/BOTTOM: - HEAVY SANTOON

DUPATA:- HEAVY NAZNEEN

D.NO : 209-A





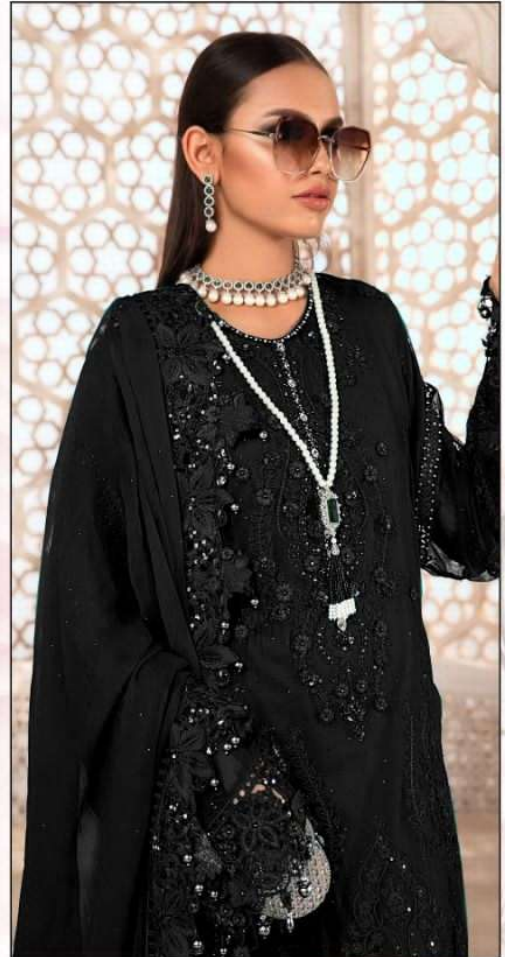
GARMENT DETAIL

TOP:- GEORGETTE FABRIC WITH
HEAVY WORK

INNER/BOTTOM: - HEAVY SANTOON

DUPATA:- HEAVY NAZNEEN

D.NO : 209-B





GARMENT DETAIL

TOP:- GEORGETTE FABRIC WITH
HEAVY WORK

INNER/BOTTOM: - HEAVY SANTOON

DUPATA:- HEAVY NAZNEEN

D.NO : 209-C





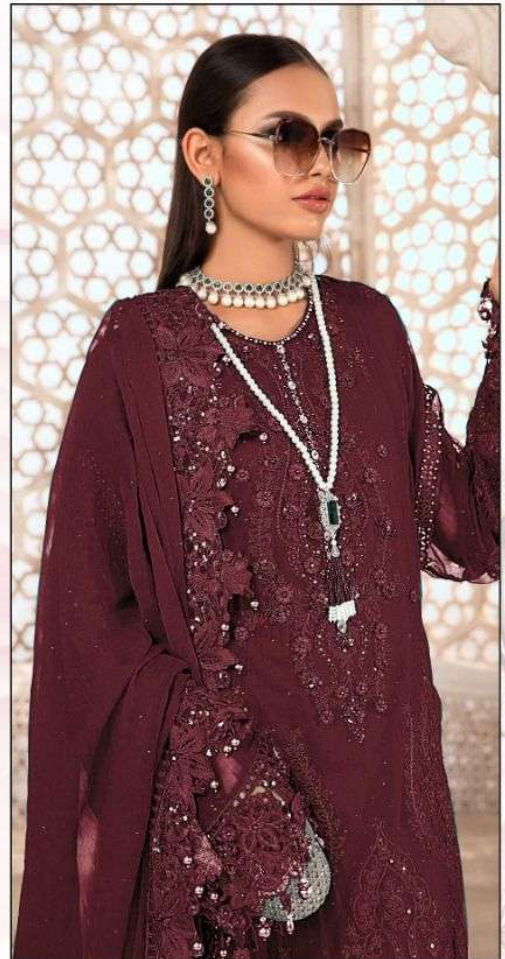
GARMENT DETAIL

TOP:- GEORGETTE FABRIC WITH
HEAVY WORK

INNER/BOTTOM: - HEAVY SANTOON

DUPATA:- HEAVY NAZNEEN

D.NO : 209-D





GARMENT DETAIL

TOP:- GEORGETTE FABRIC WITH
HEAVY WORK

INNER/BOTTOM: - HEAVY SANTOON

DUPATA:- HEAVY NAZNEEN

D.NO : 209-E





GARMENT DETAIL

TOP:- GEORGETTE FEBRIC WITH
HEAVY WORK

INNER/BOTTOM: - HEAVY SANTOON

DUPATA:- HEAVY NAZNEEN

D.NO : 209-F

