



SHUBHKALA

VOL. 13

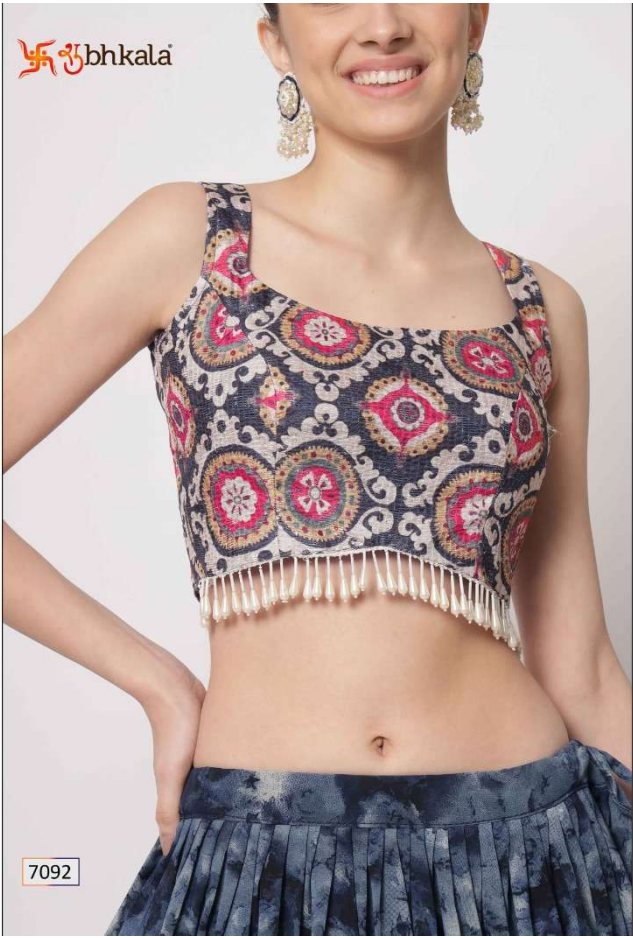


Swabhkala



7091

शुभकला bhkala



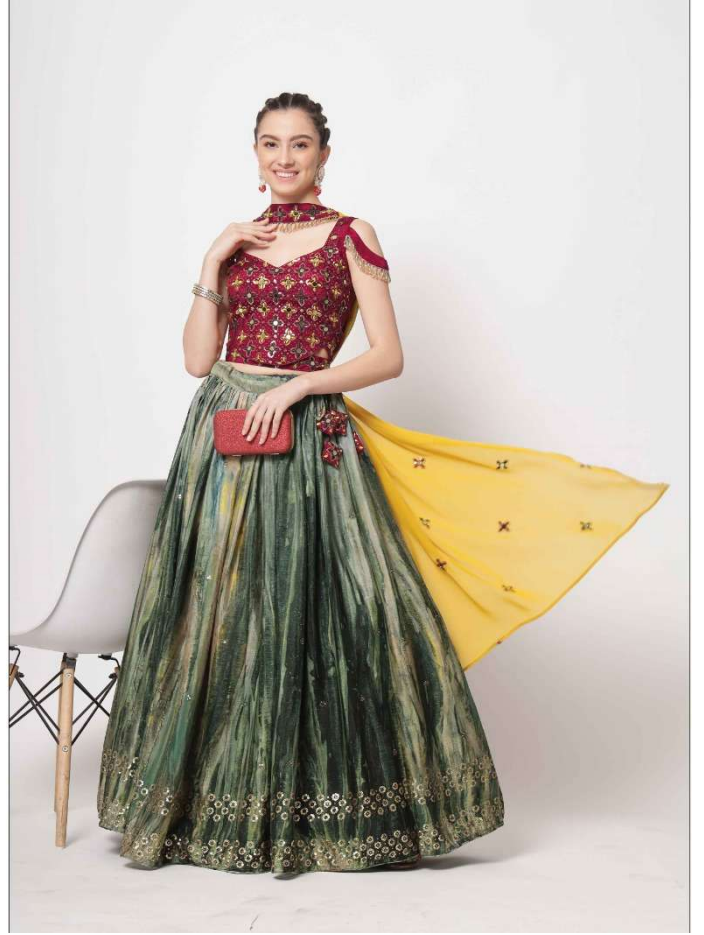
7092



Swastika bhkala



7093





SHUBHKALA

VOL. 13

Design NO. (SKU)	Color	Lehenga Fabric	Choli Fabric	Dupatta Fabric	Size (Semi-Stitched)	Lehenga Work	Choli Work	Dupatta Work	Lehenga Length	Choli Length	Dupatta Length MTR	Weight
7091	Lehenga: Beige Choli: Pink Dupatta: Sky	Chinon Silk	Chinon Silk	Fancy Net	UPTO 42 BUST AND WAIST	Crush with foil work	Print with sequince work	Thread with Seqince Embroidered Work	42 INCH	1 MTR	2.30 MTR	1.5 KG
7092	Lehenga: Navy Choli: Navy Dupatta: Deep Pink	Silk	Chinon Silk	Georgette	UPTO 42 BUST AND WAIST	Print with Sequince Embroidered Work	Print with sequince work	NA	42 INCH	1 MTR	2.40 MTR	1.5 KG
7093	Lehenga: Green Choli: Maroon Dupatta: Yellow	Chinon Silk	Georgette	Georgette	UPTO 42 BUST AND WAIST	Print with Sequince Embroidered Work	Thread with sequince embroidered work	Thread with Sequince Embroidered Work	42 INCH	0.80 MTR	2.30 MTR	1.5 KG

THIS BOOK / CATALOGUE / LOGO / ARE PROTECTED UNDER COPYRIGHT ACT.

AN INLEGAL/UNAUTHORIZED REPRINT, PUBLISHING, REPRODUCTION, DISTRIBUTION AND MODIFICATION OF ANY IMAGES, PHOTOGRAPHS AND PRODUTCS, TOTALLY OR IN PART, FOR ANY PURPOSE, REASON OR CAUSE IS STRICTLY PROHIBITED AND PUNISHABLE UNDER LAW.



7091



7092



7093

शुभकला

SHUBHKALA
VOL. 13