

**D.NO.- 101-A**

**TOP** - ORGANZA EMBROIDERY WITH  
NECK KHATLI WORK

**BOTTOM** - PURE VISCOSE

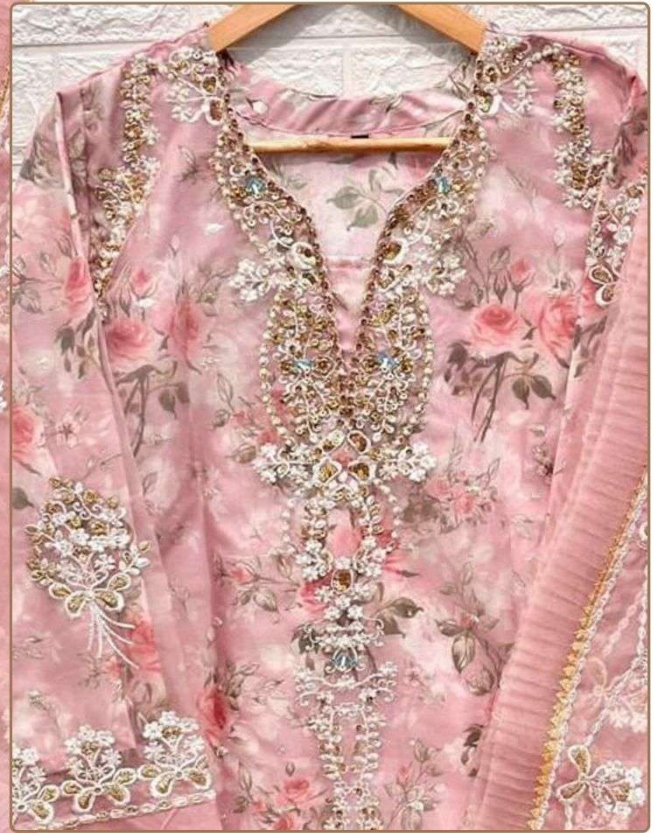
**INNER** - DUAL SANTOON WITH DIGITAL PRINTED

**DUPATTA** - ORGANZA EMBROIDERY WORK WITH  
FOUR SIDE FREEL

Ⓟ DRY CLEAN ONLY.

ⓧ DO NOT USE ANY BLEACH OR STAIN REMOVING CHEMICAL.

🧊 IRON THE FABRIC AT MODERATE TEMPERATURE.



**D.NO.- 101-A**

**TOP** - ORGANZA EMBROIDERY WITH  
NECK KHATLI WORK

**BOTTOM** - PURE VISCOSE

**INNER** - DUAL SANTOON WITH DIGITAL PRINTED

**DUPATTA** - ORGANZA EMBROIDERY WORK WITH  
FOUR SIDE FREEL

Ⓟ DRY CLEAN ONLY.

ⓧ DO NOT USE ANY BLEACH OR STAIN REMOVING CHEMICAL.

☎ IRON THE FABRIC AT MODERATE TEMPERATURE.



**D.NO.- 101-B**

**TOP** - ORGANZA EMBROIDERY WITH  
NECK KHATLI WORK

**BOTTOM** - PURE VISCOSE

**INNER** - DUAL SANTOON WITH DIGITAL PRINTED

**DUPATTA** - ORGANZA EMBROIDERY WORK WITH  
FOUR SIDE FREEL

Ⓟ DRY CLEAN ONLY.

ⓧ DO NOT USE ANY BLEACH OR STAIN REMOVING CHEMICAL.

☎ IRON THE FABRIC AT MODERATE TEMPERATURE.



**D.NO.- 101-C**

**TOP** - ORGANZA EMBROIDERY WITH  
NECK KHATLI WORK

**BOTTOM** - PURE VISCOSE

**INNER** - DUAL SANTOON WITH DIGITAL PRINTED

**DUPATTA** - ORGANZA EMBROIDERY WORK WITH  
FOUR SIDE FREEL

Ⓟ DRY CLEAN ONLY.

ⓧ DO NOT USE ANY BLEACH OR STAIN REMOVING CHEMICAL.

☎ IRON THE FABRIC AT MODERATE TEMPERATURE.



TOP - ORGANZA EMBROIDERY WITH NECK KHATLI WORK  
BOTTOM - PURE VISCOSE  
INNER - DUAL SANTOON WITH DIGITAL PRINTED  
DUPATTA - ORGANZA EMBROIDERY WORK WITH FOUR SIDE FREEL



D.NO.- 101-A



D.NO.- 101-B



D.NO.- 101-C