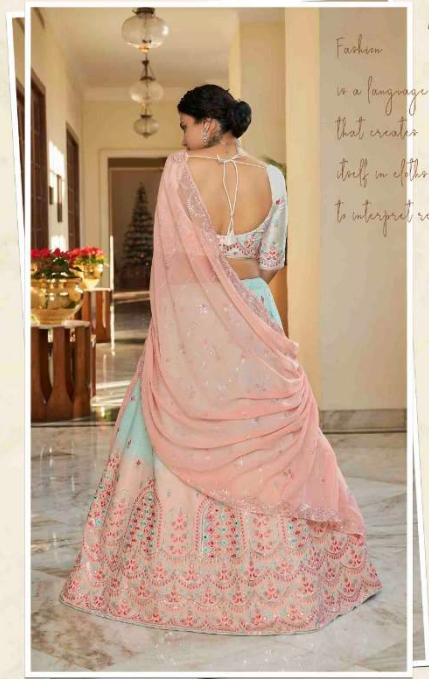




Bridesmaid
VOL-27



Shikha bhkala



*Fashion
is a language
that creates
itself in clothes
to interpret reality.*

2261

शुभकला



Fashion
is a language
that creates
itself in clothes
to interpret



2262





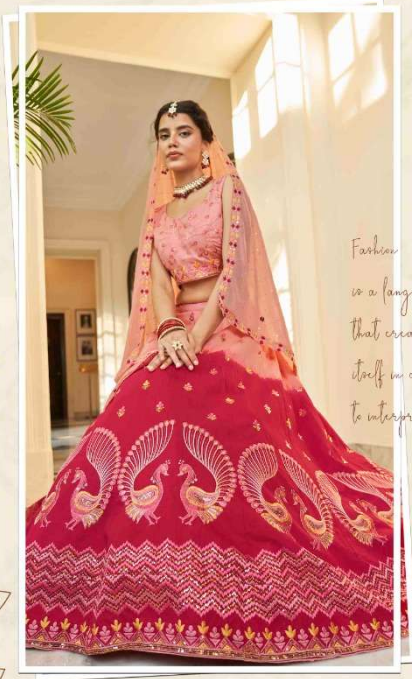
शुभकला

*Fashion
is a language
that creates
itself in clothes
to interpret reality*



2263

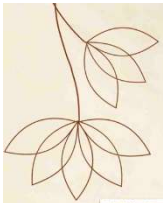
शुभकला



*Fashion
is a language
that creates
itself in clothes
to interpret reality*

2264





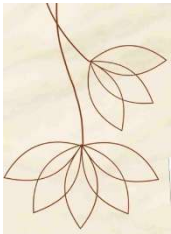
शुभकला



*Fashion
is a language
that creates
itself in clothes
to interpret...*

2265





शुभकला



*Fashion
is a language
that creates
itself in clothes
to interpret real*

2266



Bridesmaid

VOL-27

| Design NO. (SKU) | Main Color | Lehenga Fabric | Choli Fabric | Dupatta Fabric | Size (Semi-Stitched) | Lehenga Work | Choli Work | Dupatta Work | Choli Length MTR | Lehenga Length MTR | Dupatta Length MTR | Weight | RATE |
|------------------|---------------------|----------------|--------------|----------------|------------------------|--|---------------------------------------|---------------------------------------|------------------|--------------------|--------------------|--------|------|
| 2261 | Sky – Peach | Art Silk | Art Silk | Art Silk | UPTO 42 BUST AND WAIST | Thread And Sequince Embroidered With Mirror Work | Thread With Sequince Embroidered Work | Thread With Sequince Embroidered Work | 1 MTR | 42 INCH | 2.40 MTR | 2 KG | 3300 |
| 2262 | Beige – Maroon | Art Silk | Art Silk | Georgette | UPTO 42 BUST AND WAIST | Thread And Sequince Embroidered With Mirror Work | Thread With Sequince Embroidered Work | Thread With Sequince Embroidered Work | 1 MTR | 42 INCH | 2.40 MTR | 2 KG | 3300 |
| 2263 | Dusty Pink – Purple | Art Silk | Art Silk | Art Silk | UPTO 42 BUST AND WAIST | Thread With Sequince Embroidered Work | Thread With Sequince Embroidered Work | Thread With Sequince Embroidered Work | 1 MTR | 42 INCH | 2.40 MTR | 2 KG | 3300 |
| 2264 | Peach – Deep Pink | Art Silk | Art Silk | Georgette | UPTO 42 BUST AND WAIST | Thread With Sequince Embroidered Work | Thread With Sequince Embroidered Work | Thread With Sequince Embroidered Work | 1 MTR | 42 INCH | 2.40 MTR | 2 KG | 3300 |
| 2265 | Rust Orange - Green | Art Silk | Art Silk | Georgette | UPTO 42 BUST AND WAIST | Thread With Sequince Embroidered Work | Thread With Sequince Embroidered Work | Thread With Sequince Embroidered Work | 1 MTR | 42 INCH | 2.40 MTR | 2 KG | 3300 |
| 2266 | Dusty Pink - Navy | Art Silk | Art Silk | Georgette | UPTO 42 BUST AND WAIST | Thread And Sequince Embroidered With Mirror Work | Thread With Sequince Embroidered Work | Thread With Sequince Embroidered Work | 1 MTR | 42 INCH | 2.40 MTR | 2 KG | 3300 |

THIS BOOK / CATALOGUE / LOGO / ARE PROTECTED UNDER COPYRIGHT ACT.

AN INLEGAL/UNAUTHORIZED REPRINT, PUBLISHING, REPRODUCTION, DISTRIBUTION AND MODIFICATION OF ANY IMAGES, PHOTOGRAPHS AND PRODUCTCS, TOTALLY OR IN PART, FOR ANY PURPOSE, REASON OR CAUSE IS STRICTLY PROHIBITED AND PUNISHABLE UNDER LAW.



2261



2262



2263



2264



2265



2266

Bridesmaid
VOL-27

