



**TOP- HEVY DAL ORGANZA WITH EMBROIDERY  
WORK WITH DIMAND MOTI**

M-183-A

**BOTTOM/INNER- SANTOON WITH WORK**

**DUPATTA/NET- HEVY DAL ORGANZA WITH  
EMBROIDERY WORK WITH FANCY LESS**

- ☉ DRY CLEAN ONLY.
- ✘ DO NOT USE ANY BLEACH OR STAIN REMOVING CHEMICAL.
- ☎ IRON THE FABRIC AT MODERATE TEMPERATURE.



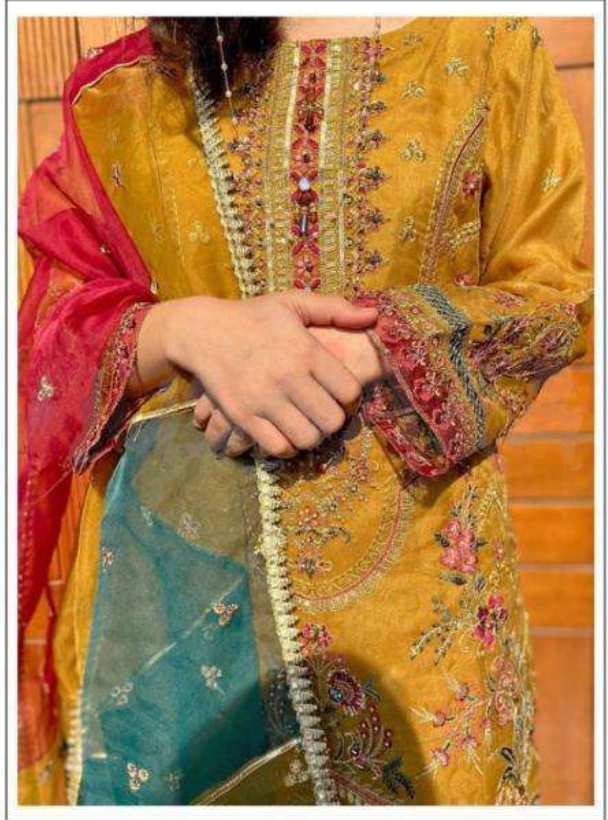
**TOP- HEVY DAL ORGANZA WITH EMBROIDERY  
WORK WITH DIMAND MOTI**

M-183-A

**BOTTOM/INNER- SANTOON WITH WORK**

**DUPATTA/NET- HEVY DAL ORGANZA WITH  
EMBROIDERY WORK WITH FANCY LESS**

- ☉ DRY CLEAN ONLY.
- ✘ DO NOT USE ANY BLEACH OR STAIN REMOVING CHEMICAL.
- ☎ IRON THE FABRIC AT MODERATE TEMPERATURE.



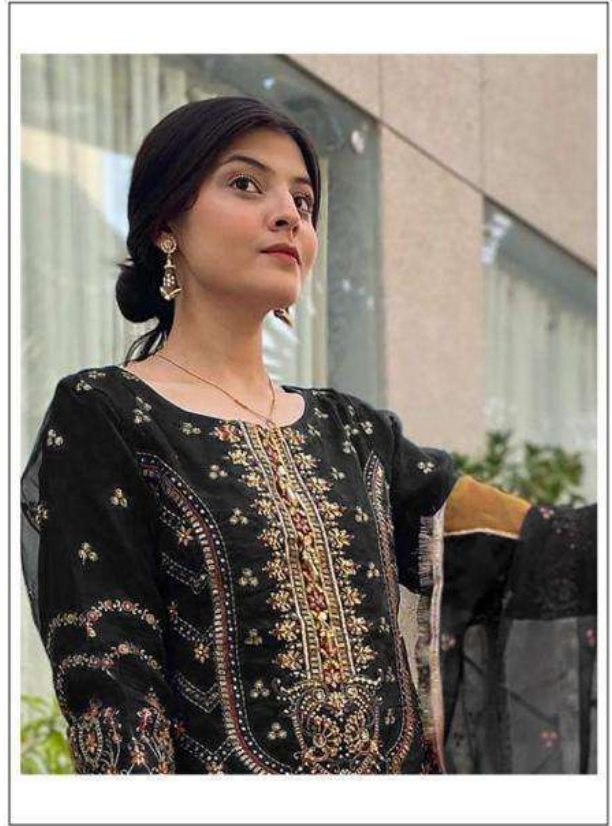
**TOP- HEVY DAL ORGANZA WITH EMBROIDERY  
WORK WITH DIMAND MOTI**

**M-183-B**

**BOTTOM/INNER- SANTOON WITH WORK**

**DUPATTA/NET- HEVY DAL ORGANZA WITH  
EMBROIDERY WORK WITH FANCY LESS**

- DRY CLEAN ONLY.
- DO NOT USE ANY BLEACH OR STAIN REMOVING CHEMICAL.
- IRON THE FABRIC AT MODERATE TEMPERATURE.



**TOP- HEVY DAL ORGANZA WITH EMBROIDERY  
WORK WITH DIMAND MOTI**

M-183-C

**BOTTOM/INNER- SANTOON WITH WORK**

**DUPATTA/NET- HEVY DAL ORGANZA WITH  
EMBROIDERY WORK WITH FANCY LESS**

- ☉ DRY CLEAN ONLY.
- ✘ DO NOT USE ANY BLEACH OR STAIN REMOVING CHEMICAL.
- ☎ IRON THE FABRIC AT MODERATE TEMPERATURE.



**TOP- HEVY DAL ORGANZA WITH EMBROIDERY  
WORK WITH DIMAND MOTI**

**M-183-D**

**BOTTOM/INNER- SANTOON WITH WORK**

**DUPATTA/NET- HEVY DAL ORGANZA WITH  
EMBROIDERY WORK WITH FANCY LESS**

-  DRY CLEAN ONLY.
-  DO NOT USE ANY BLEACH OR STAIN REMOVING CHEMICAL.
-  IRON THE FABRIC AT MODERATE TEMPERATURE.

