



DS-147-A

**Top- FOX GEORGETTE**

**Bottom/Iner- SANTOON**

**Dupatta- NAZMEEN EMBROIDERY  
WITH FRILL**

**WASHING INSTRUCTIONS**

DO NOT USE ANY TYPE OF BLEACH OR CHLORINE-BLEACHING AGENTS AS  
 BEFORE CUTTING OR FINISHING, SHOULD BE WASHED IN WATER  
 ALL COMPONENTS SEPARATELY FOR 10 MINUTES  
 DO NOT KEEP IN TUBS FOR LONGER THAN 24 HOURS  
 WASH COLOURED AND WHITE FABRICS SEPARATELY  
 IRON LOW AND PRESSURE TO REMOVE STAIN FROM DARK IN DIRECT SUNLIGHT  
 (EXTRA LACES, HANGINGS AND ACCESSORIES ARE NOT INCLUDED)



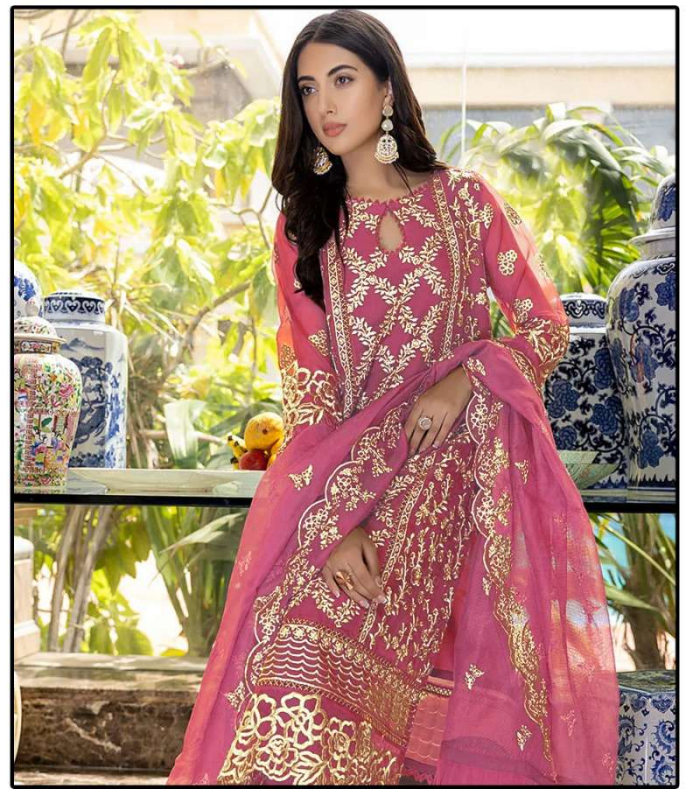


DS-147-A

**Top- FOX GEORGETTE**  
**Bottom/Iner- SANTOON**  
**Dupatta- NAZMEEN EMBROIDERY**  
**WITH FRILL**

**WASHING INSTRUCTIONS**  
 DO NOT USE ANY TYPE OF BLEACH OR CHLORINE BLEACHING AGENTS  
 BEFORE CUTTING OR FINISHING, SHOULD BE WASHED IN WATER  
 ALL COMPONENTS SEPARATELY FOR 10 MINUTES  
 DO NOT KEEP IN TUMBLER OR DRYER TO AVOID COUP MARKS  
 WASH COLOURED AND WHITE FABRICS SEPARATELY  
 IRON LOW HEAT AND PRESSURE TO AVOID SHINING OR DIRECT SUNLIGHT  
 (EXTRA LACES, HANGINGS AND ACCESSORIES ARE NOT INCLUDED)



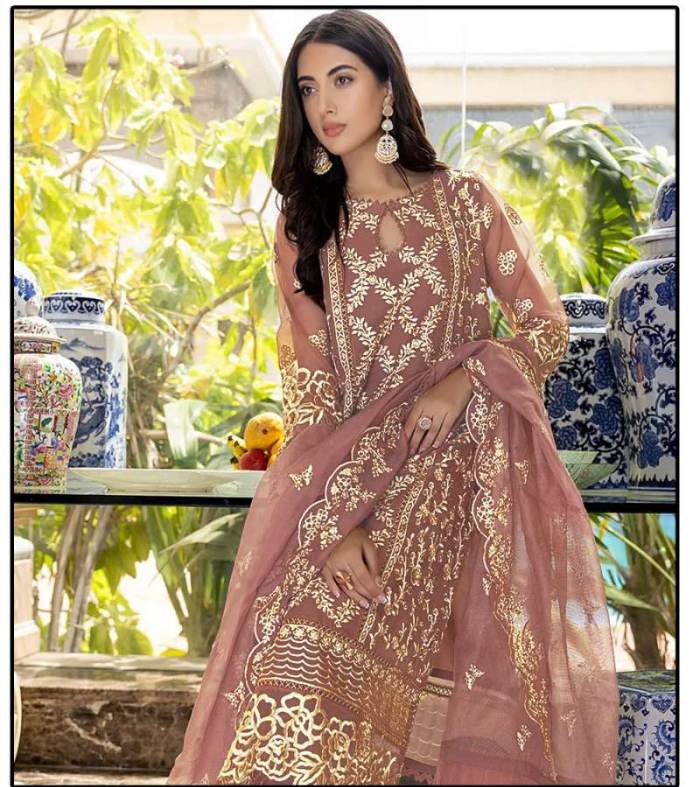


DS-147-B

**Top- FOX GEORGETTE**  
**Bottom/Iner- SANTOON**  
**Dupatta- NAZMEEN EMBROIDERY WITH FRILL**

**WASHING INSTRUCTIONS**  
 DO NOT USE ANY TYPE OF BLEACH OR CHLORINE BLEACHING AGENTS  
 BEFORE CUTTING OR FINISHING, SHOULD BE WASHED IN WATER  
 ALL COMPONENTS SEPARATELY FOR 10 MINUTES  
 DO NOT KEEP IN TIGHTER THAN LOCKER TO AVOID COUP MARKS  
 WASH COLOURED AND WHITE FABRICS SEPARATELY  
 IRON CLOTHS AND PRESSURE TERNIPAL AND DRY BY SHADY IN DIRECT SUNLIGHT  
 (EXTRA LACES, HANGINGS AND ACCESSORIES ARE NOT INCLUDED)





DS-147-C

**Top- FOX GEORGETTE**

**Bottom/Iner- SANTOON**

**Dupatta- NAZMEEN EMBROIDERY  
WITH FRILL**

**WASHING INSTRUCTIONS**

DO NOT USE ANY TYPE OF BLEACH OR CHLORINE-BLEACHING AGENTS AS  
REFRIGERATING OR DYEING SHOULD BE DONE IN WARM WATER  
ALL COMPONENTS SHOULD BE WASHED SEPARATELY  
DO NOT KEEP IN TIGHT SPACES TO AVOID COUP MARKS  
WASH COLOURED AND WHITE FABRICS SEPARATELY  
IRON CLOTHES AT MODERATE TEMPERATURE TO AVOID SHINING IN DIRECT SUNLIGHT  
(EXTRA LACES, HANGINGS AND ACCESSORIES ARE NOT INCLUDED)





DS-147-D

**Top- FOX GEORGETTE**

**Bottom/Iner- SANTOON**

**Dupatta- NAZMEEN EMBROIDERY  
WITH FRILL**

**WASHING INSTRUCTIONS**

DO NOT USE ANY TYPE OF BLEACH OR CHLORINE-BLEACHING AGENTS AS  
 BEFORE CUTTING OR FINISHING, SHOULD BE WASHED IN WATER  
 ALL COMPONENTS SEPARATELY FOR 10 MINUTES  
 DO NOT WET-FINISH IN TUMBLER DRYER TO AVOID COUP MARKS  
 WASH COLOURED AND WHITE FABRICS SEPARATELY  
 IRON CLOTHS AND PRESSURE TERNING ARE TO BE DONE BY HAND IN DIRECT SUNLIGHT  
 (EXTRA LACES, HANGINGS AND ACCESSORIES ARE NOT INCLUDED)





**Top-  
FOX GEORGETTE**

**Bottom/Iner-  
SANTOON**

**Dupatta-  
NAZMEEN EMBROIDERY  
WITH FRILL**



DS-147-A



DS-147-B



DS-147-C



DS-147-D