



**TOP- HEAVY FOX GEROGETTE EMBROIDERED  
WITH DAIMOND WORK**

M-245

**INNER- SANTOON**

**BOTTOM- SANTOON WITH WORK**

**DUPATTA/NET- HEAVY EMBROIDERY WORK**

☐ DRY CLEAN ONLY.

✗ DO NOT USE ANY BLEACH OR STAIN REMOVING CHEMICAL.

☐ IRON THE FABRIC AT MODERATE TEMPERATURE.



**TOP- HEAVY FOX GEROGETTE EMBROIDERED  
WITH DAIMOND WORK**

M-245

**INNER- SANTOON**

**BOTTOM- SANTOON WITH WORK**

**DUPATTA/NET- HEAVY EMBROIDERY WORK**

☐ DRY CLEAN ONLY.

✗ DO NOT USE ANY BLEACH OR STAIN REMOVING CHEMICAL.

☐ IRON THE FABRIC AT MODERATE TEMPERATURE.





**TOP- HEAVY FOX GEROGETTE EMBROIDERED  
WITH DAIMOND WORK**

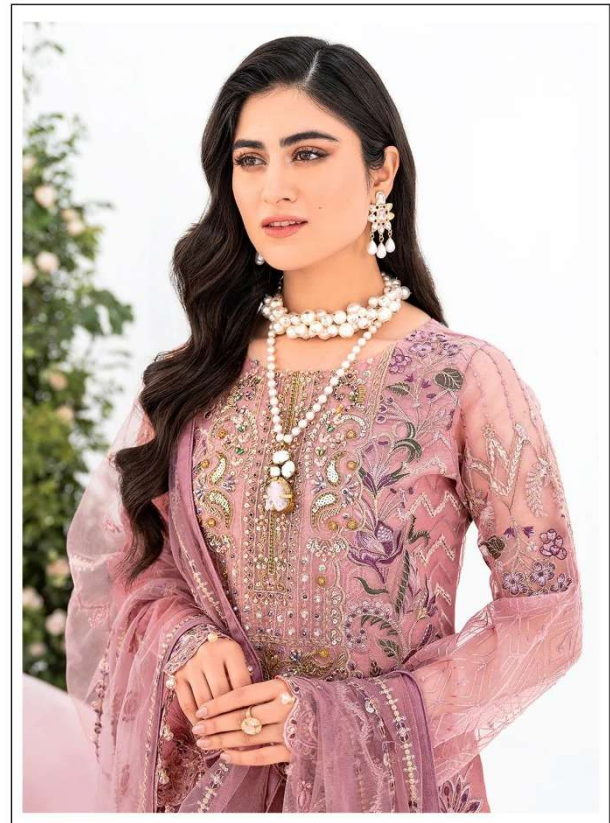
M-246

**INNER- SANTOON**

**BOTTOM- SANTOON**

**DUPATTA/NET- HEAVY EMBROIDERY WORK**

- ☐ DRY CLEAN ONLY.
- ✗ DO NOT USE ANY BLEACH OR STAIN REMOVING CHEMICAL.
- ☐ IRON THE FABRIC AT MODERATE TEMPERATURE.



**TOP- HEAVY FOX GEROGETTE EMBROIDERED  
WITH DAIMOND WORK**

M-247

**INNER- SANTOON**

**BOTTOM- SANTOON WITH WORK**

**DUPATTA/NET- HEAVY EMBROIDERY WORK**

- ☐ DRY CLEAN ONLY.
- ✗ DO NOT USE ANY BLEACH OR STAIN REMOVING CHEMICAL.
- ☐ IRON THE FABRIC AT MODERATE TEMPERATURE.





**TOP- HEAVY FOX GEROGETTE EMBROIDERED  
WITH DAIMOND WORK**

M-248

**INNER- SANTOON**

**BOTTOM- SANTOON**

**DUPATTA/NET- HEAVY EMBROIDERY WORK**

- ☐ DRY CLEAN ONLY.
- ✗ DO NOT USE ANY BLEACH OR STAIN REMOVING CHEMICAL.
- ☐ IRON THE FABRIC AT MODERATE TEMPERATURE.