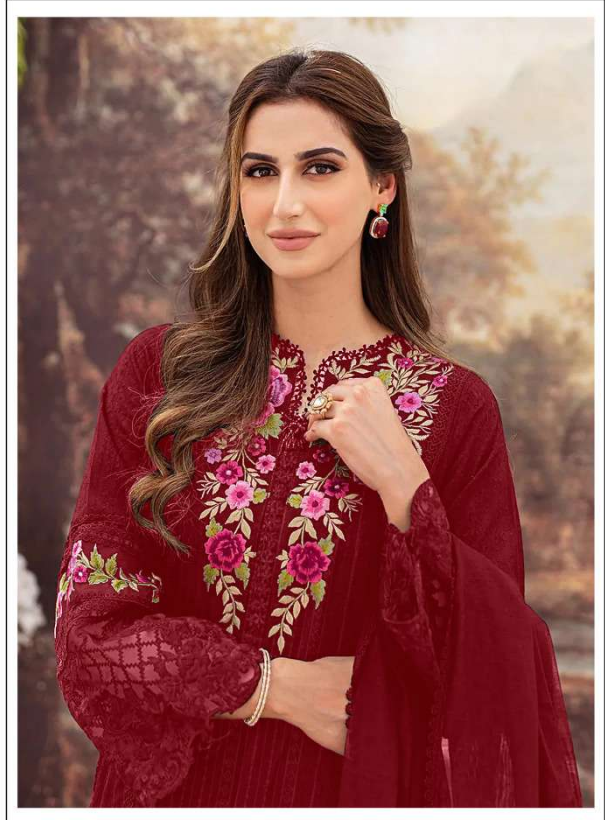




D.No:-101 A

TOP- JORJAT EMBROIDERY WITH KHATLI WORK
BOTTOM/INNER- SANTOON
DUPATTA- NAZMEEN WITH WORK

☉ DRY CLEAN ONLY.
✘ DO NOT USE ANY BLEACH OR STAIN REMOVING CHEMICAL.
☎ IRON THE FABRIC AT MODERATE TEMPERATURE.

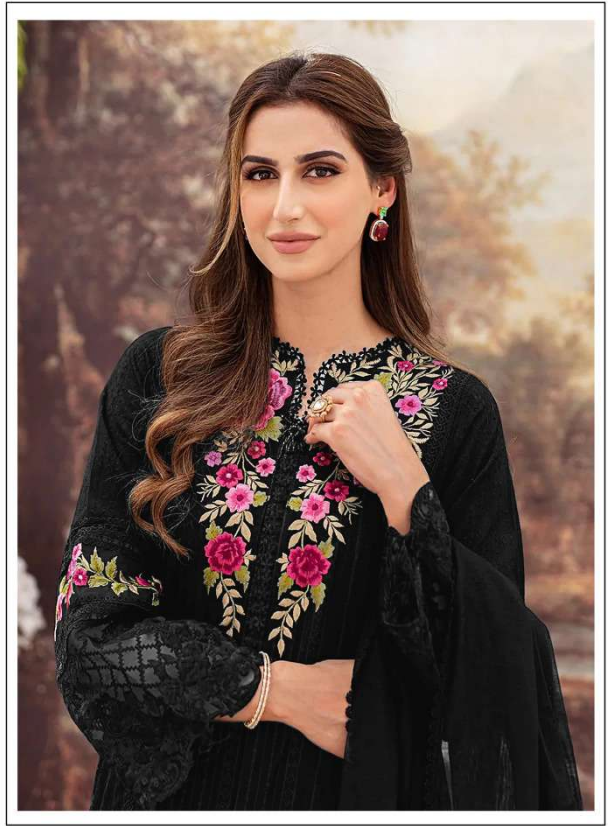


D.No:-101 A

TOP- JORJAT EMBROIDERY WITH KHATLI WORK
BOTTOM/INNER- SANTOON
DUPATTA- NAZMEEN WITH WORK

☉ DRY CLEAN ONLY.
✘ DO NOT USE ANY BLEACH OR STAIN REMOVING CHEMICAL.
☎ IRON THE FABRIC AT MODERATE TEMPERATURE.





D.No:-101 B

TOP- JORJAT EMBROIDERY WITH KHATLI WORK

BOTTOM/INNER- SANTOON

DUPATTA- NAZMEEN WITH WORK

- ☉ DRY CLEAN ONLY.
- ✘ DO NOT USE ANY BLEACH OR STAIN REMOVING CHEMICAL.
- ☎ IRON THE FABRIC AT MODERATE TEMPERATURE.



D.No:-101 C

TOP- JORJAT EMBROIDERY WITH KHATLI WORK

BOTTOM/INNER- SANTOON

DUPATTA- NAZMEEN WITH WORK

☉ DRY CLEAN ONLY.
✘ DO NOT USE ANY BLEACH OR STAIN REMOVING CHEMICAL.
☎ IRON THE FABRIC AT MODERATE TEMPERATURE.



D.No:-101 C



TOP- JORJAT EMBROIDERY WITH KHATLI WORK

BOTTOM/INNER- SANTOON

DUPATTA- NAZMEEN WITH WORK

- Ⓟ DRY CLEAN ONLY.
- ⓧ DO NOT USE ANY BLEACH OR STAIN REMOVING CHEMICAL.
- 🧊 IRON THE FABRIC AT MODERATE TEMPERATURE.