



DUBAAB

DUBAAB

TOP: CARRIBE COTTON WITH BEVY EMBROIDERY
BOTTOM: 100% LACE
SHOULDER: BEVY NET WITH EMBROIDERY NECK

Rubaab™



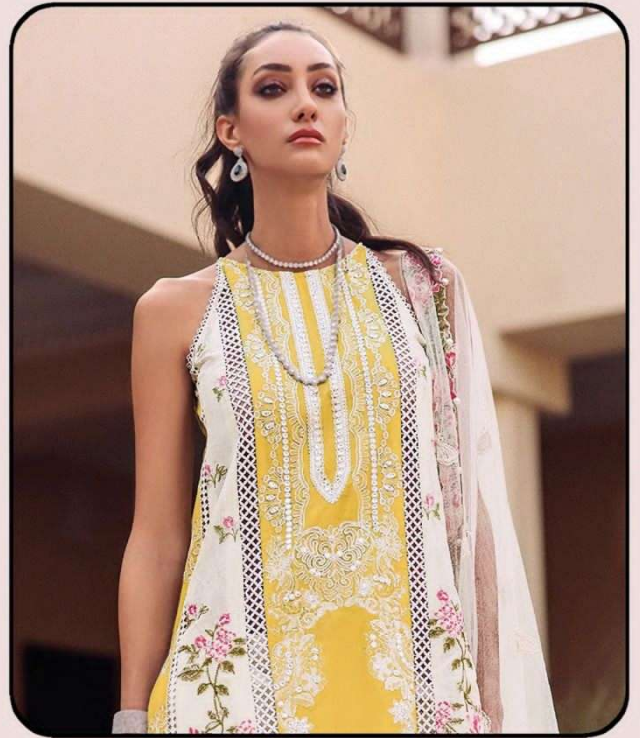
D.NO.101 A



TOP - CAMBRIC COTTON WITH HEVY EMBROIDERY

BOTTOM - SEMI LOWN

DUPATTA - HEVY NET WITH EMBROIDERY WORK



WASHING INSTRUCTIONS

DO NOT USE ANY TYPE OF BLEACH OR STRAIN REMOVING CHEMICALS BEFORE CUTTING / STITCHING. FABRIC SHOULD BE SOAKED IN WATER (ALL COMPONENTS SEPARATELY) FOR 15 MINUTES

DO NOT KEEP WET FABRIC IN TWISTED FORM IN ORDER TO AVOID COPY MARKS !

WASH COLOURED AND WHITE FABRICS SEPARATELY

IRON CLOTHES AT MODERATE TEMPERATURE ! DO NOT DRY FABRIC IN DIRECT SUNLIGHT (EXTRA LACES , HANGING AND ACCESSORIES ARE NOT INDUDED)





Rubaab™



D.NO.101 B



TOP - CAMBRIC COTTON WITH HEVY EMBROIDERY

BOTTOM - SEMI LOWN

DUPATTA - HEVY NET WITH EMBROIDERY WORK



WASHING INSTRUCTIONS

DO NOT USE ANY TYPE OF BLEACH OR STRAIN REMOVING CHEMICALS BEFORE CUTTING / STITCHING. FABRIC SHOULD BE SOAKED IN WATER (ALL COMPONENTS SEPARATELY) FOR 15 MINUTES

DO NOT KEEP WET FABRIC IN TWISTED FROM IN ORDER TO AVOID COPY MARKS !

WASH COLOURED AND WHITE FABRICS SEPARATELY

IRON CLOTHES AT MODERATE TEMPERATURE ! DO NOT DRY FABRIC IN DIRECT SUNLIGHT (EXTRA LACES , HANGING AND ACCESSORIES ARE NOT INDUDED)





RUBAAB

TOP - CAMEL COTTON WITH NET EMBROIDERY
BOTTOM - NET COTTON
DUPETTA - NET TISSUE WITH EMBROIDERY WORK

(The card contains two photographs of a woman wearing the dress, one full-body and one close-up of the bodice.)

RUBAAB

Rubaab™



D.NO.101 C



TOP - CAMBRIC COTTON WITH HEVY EMBROIDERY

BOTTOM - SEMI LOWN

DUPATTA - HEVY NET WITH EMBROIDERY WORK



WASHING INSTRUCTIONS

DO NOT USE ANY TYPE OF BLEACH OR STAIN REMOVING CHEMICALS BEFORE CUTTING / STITCHING. FABRIC SHOULD BE SOAKED IN WATER (ALL COMPONENTS SEPARATELY) FOR 15 MINUTES

DO NOT KEEP WET FABRIC IN TWISTED FROM IN ORDER TO AVOID COPY MARKS !

WASH COLOURED AND WHITE FABRICS SEPARATELY

IRON CLOTHES AT MODERATE TEMPERATURE ! DO NOT DRY FABRIC IN DIRECT SUNLIGHT (EXTRA LACES , HANGING AND ACCESSORIES ARE NOT INDUDED)





Rubaab™



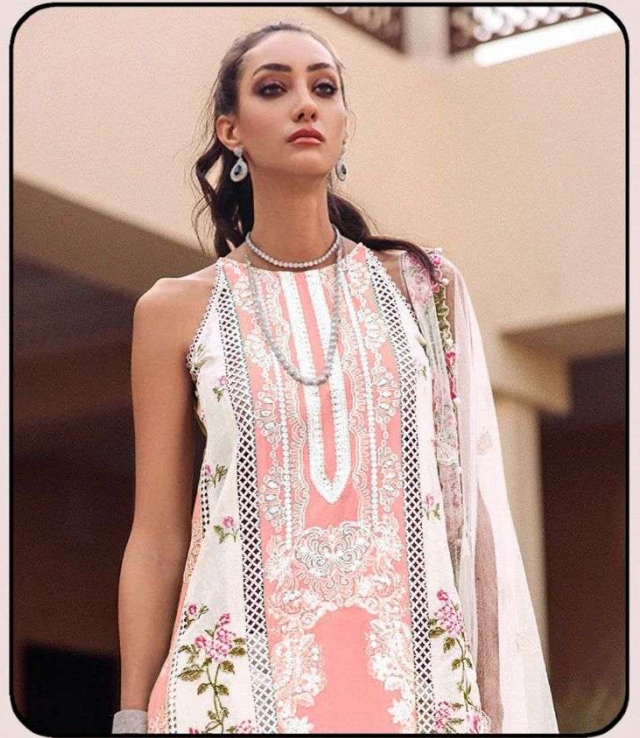
D.NO.101 D



TOP - CAMBRIC COTTON WITH HEVY EMBROIDERY

BOTTOM - SEMI LOWN

DUPATTA - HEVY NET WITH EMBROIDERY WORK



WASHING INSTRUCTIONS

DO NOT USE ANY TYPE OF BLEACH OR STAIN REMOVING CHEMICALS BEFORE CUTTING / STITCHING. FABRIC SHOULD BE SOAKED IN WATER (ALL COMPONENTS SEPARATELY) FOR 15 MINUTES

DO NOT KEEP WET FABRIC IN TWISTED FROM IN ORDER TO AVOID COPY MRKS !

WASH COLOURED AND WHITE FABRICS SEPARATELY

IRON CLOTHES AT MODERATE TEMPERATURE ! DO NOT DRY FABRIC IN DIRECT SUNLIGHT (EXTRA LACES , HANGING AND ACCESSORIES ARE NOT INDUDED)





Rubaab™

DUBAAB

DUBAAB

TOP: CARRIBE COTTON WITH BEVY EMBROIDERY
BOTTOM: 100% LACE
SHOULDER: BEVY NET WITH EMBROIDERY NECK

