

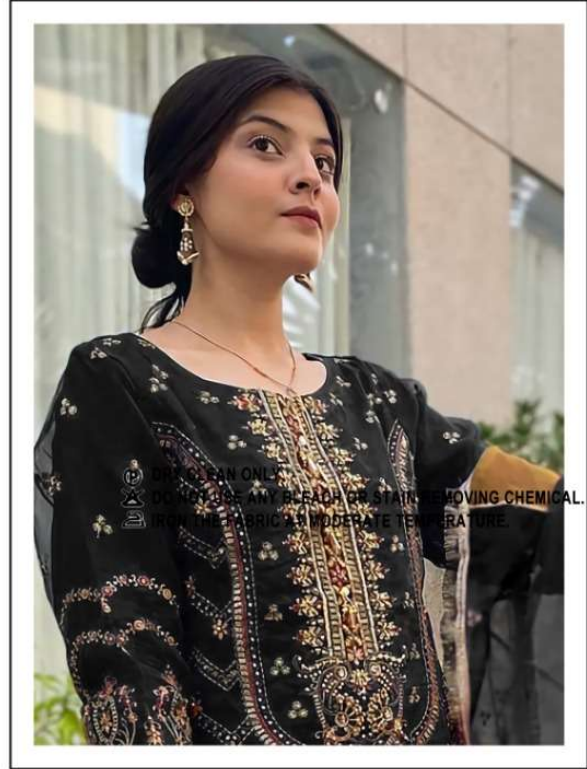
D.NO.170-A

FABRIC DETAILS

TOP- HEAVY DAL ORGANZA WITH EMBROIDERY WORK WITH DIMAND MOTI

BOTTOM/INNER- SANTOON WITH WORK

DUPATTA/NET- HEAVY DAL ORGANZA WITH EMBROIDERY WORK WITH FANCY LESS



D.NO.170-A

FABRIC DETAILS

- TOP-** HEAVY DAL ORGANZA WITH EMBROIDERY WORK WITH DIMAND MOTI
- BOTTOM/INNER-** SANTOON WITH WORK
- DUPATTA/NET-** HEAVY DAL ORGANZA WITH EMBROIDERY WORK WITH FANCY LESS



ORGANZA
EMB
DUPATTA

SLEEVES

PATCH



D.NO. 170-A
FABRIC DETAILS
TOP: HEAVY DAZ ORGANZA WITH EMBROIDERY WITH WITH ZARDANI BOTTI
BOTTOM: HEAVY DAZ ORGANZA WITH EMBROIDERY WITH WITH FANCY LEIS



D.NO.170-B

FABRIC DETAILS

- TOP-** HEAVY DAL ORGANZA WITH EMBROIDERY WORK WITH DIMAND MOTI
- BOTTOM/INNER-** SANTOON WITH WORK
- DUPATTA/NET-** HEAVY DAL ORGANZA WITH EMBROIDERY WORK WITH FANCY LESS



SLEEVES

**ORGANZA
EMB
DUPATTA**

PATCH

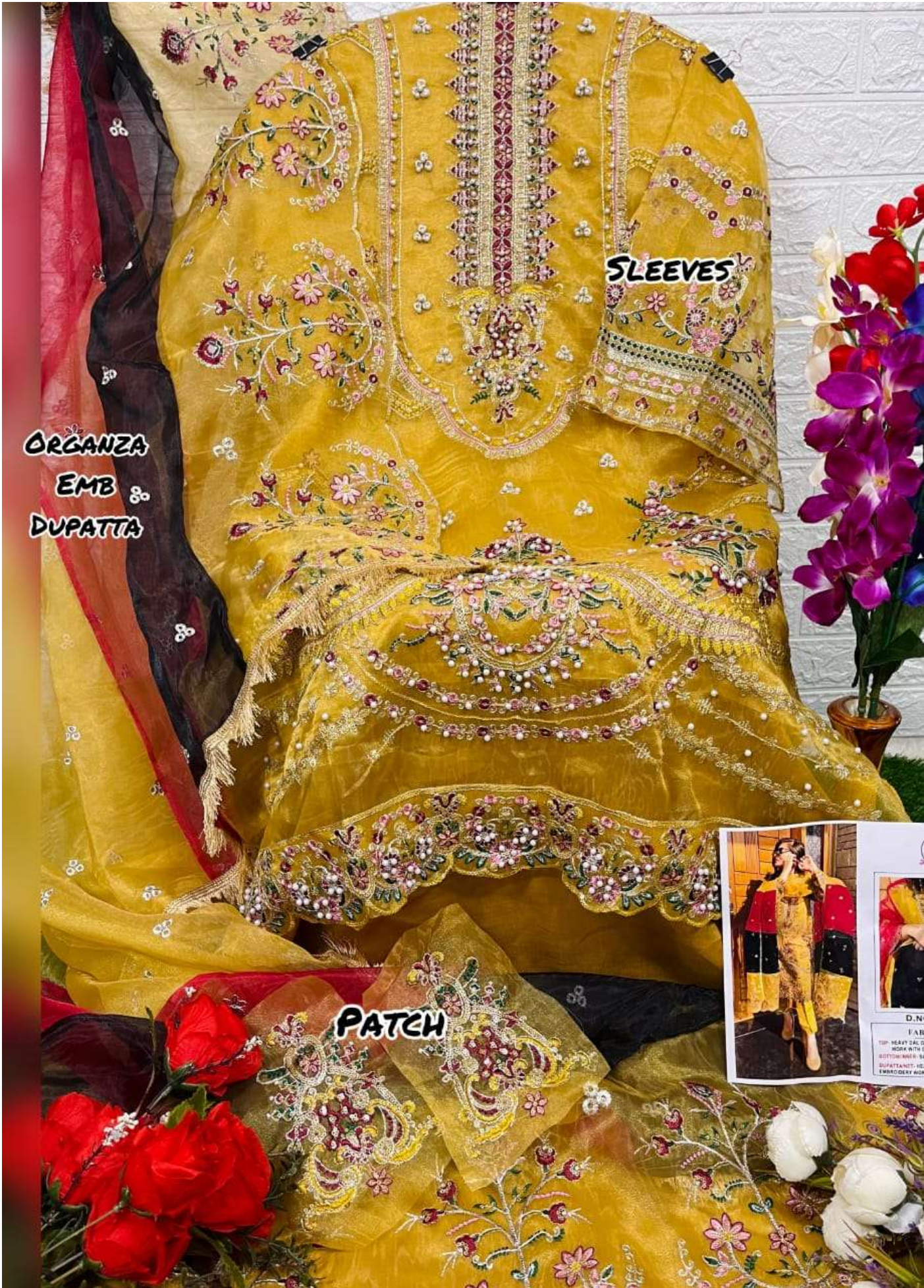




D.NO.170-C

FABRIC DETAILS

- TOP-** HEAVY DAL ORGANZA WITH EMBROIDERY WORK WITH DIMAND MOTI
- BOTTOM/INNER-** SANTOON WITH WORK
- DUPATTA/NET-** HEAVY DAL ORGANZA WITH EMBROIDERY WORK WITH FANCY LESS



**ORGANZA
EMB
DUPATTA**

SLEEVES

PATCH

