



HOOR TEX



OR-13

**CARE INSTRUCTIONS**

DO NOT USE ANY TYPE OF BLEACH OR STAIN REMOVING CHEMICALS  
DO NOT OVER EXPOSE DAMP FABRIC TO STRONG SUNLIGHT  
IRON AT MODERATE TEMPERATURE





HOOR TEX



OR-13

**CARE INSTRUCTIONS**

DO NOT USE ANY TYPE OF BLEACH OR STAIN REMOVING CHEMICALS  
DO NOT OVER EXPOSE DAMP FABRIC TO STRONG SUNLIGHT  
IRON AT MODERATE TEMPERATURE





HOOR TEX



OR-13-B

### CARE INSTRUCTIONS

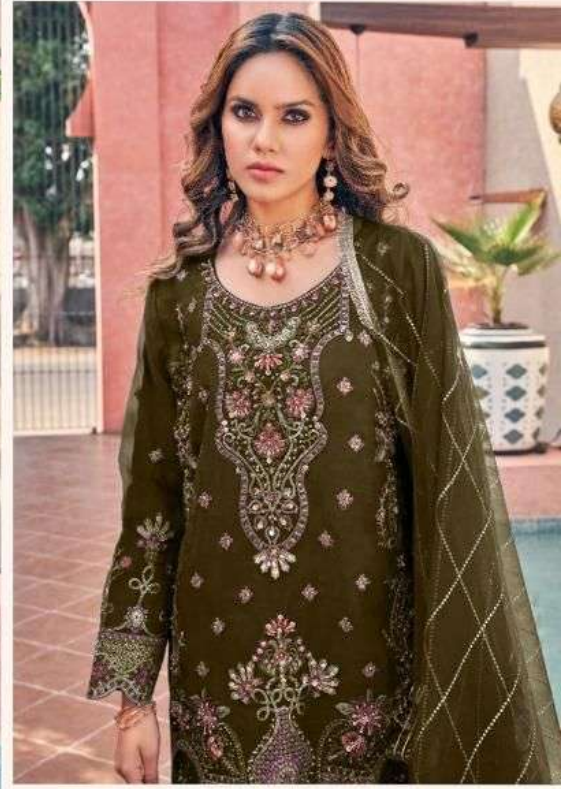
DO NOT USE ANY TYPE OF BLEACH OR STAIN REMOVING CHEMICALS  
DO NOT OVER EXPOSE DAMP FABRIC TO STRONG SUNLIGHT  
IRON AT MODERATE TEMPERATURE







HOOR TEX



OR-13-C

**CARE INSTRUCTIONS**

DO NOT USE ANY TYPE OF BLEACH OR STAIN REMOVING CHEMICALS  
DO NOT OVER EXPOSE DAMP FABRIC TO STRONG SUNLIGHT  
IRON AT MODERATE TEMPERATURE







HOOR TEX



OR-13-D

**CARE INSTRUCTIONS**

DO NOT USE ANY TYPE OF BLEACH OR STAIN REMOVING CHEMICALS  
DO NOT OVER EXPOSE DAMP FABRIC TO STRONG SUNLIGHT  
IRON AT MODERATE TEMPERATURE









HOOR TEX



OR-13-E

**CARE INSTRUCTIONS**

DO NOT USE ANY TYPE OF BLEACH OR STAIN REMOVING CHEMICALS  
DO NOT OVER EXPOSE DAMP FABRIC TO STRONG SUNLIGHT  
IRON AT MODERATE TEMPERATURE





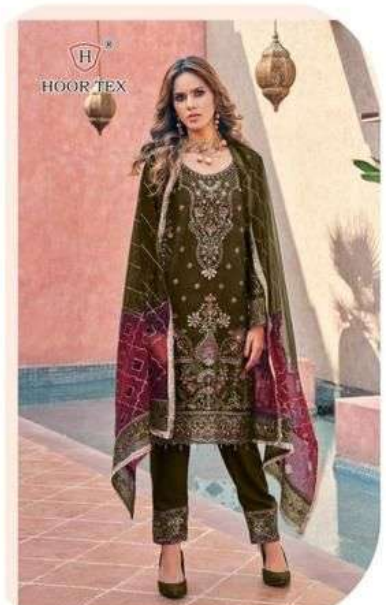




OR-13 A



OR-13 B



OR-13 C



OR-13 D



OR-13 E



HOOR TEX