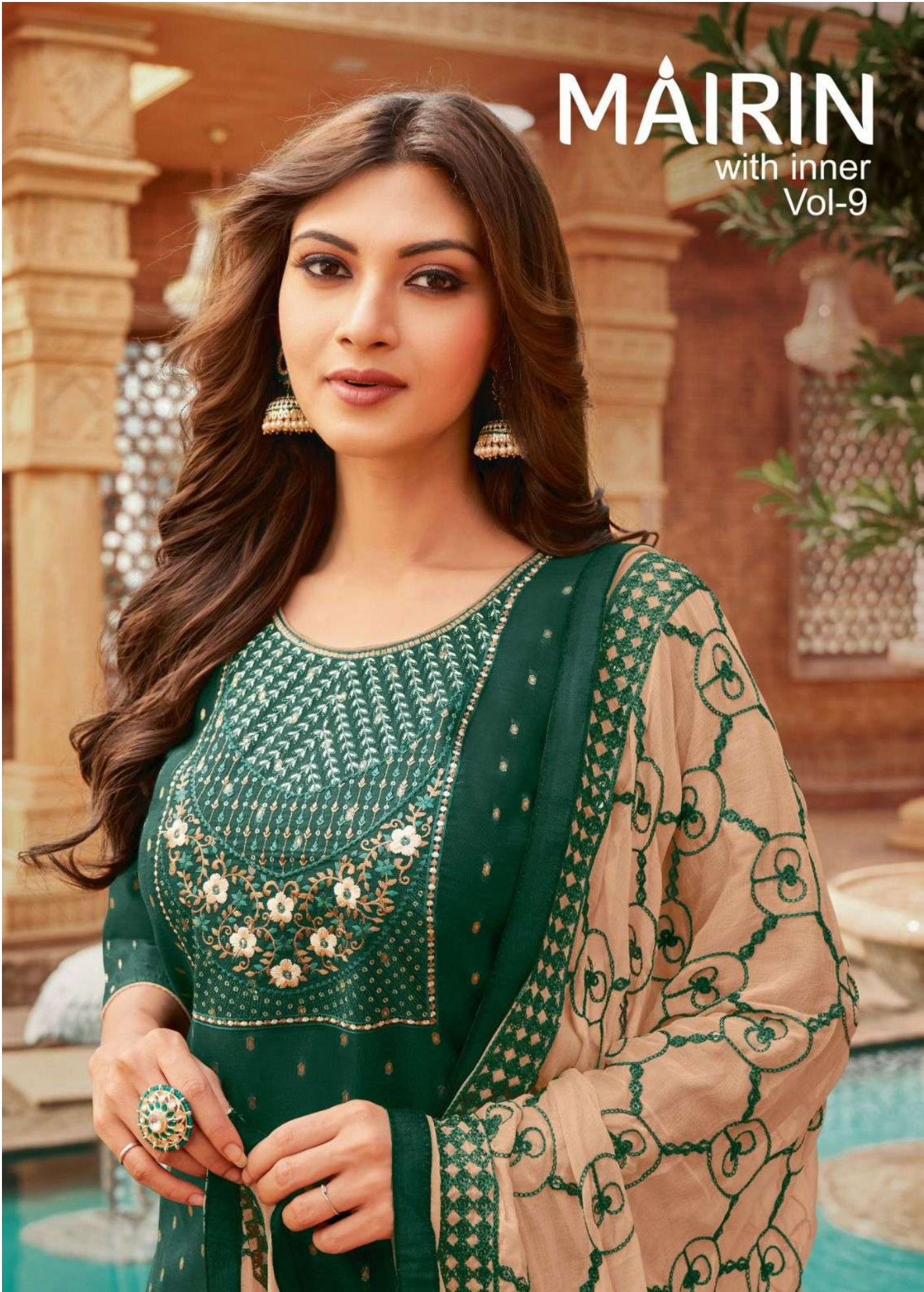


MÀIRIN

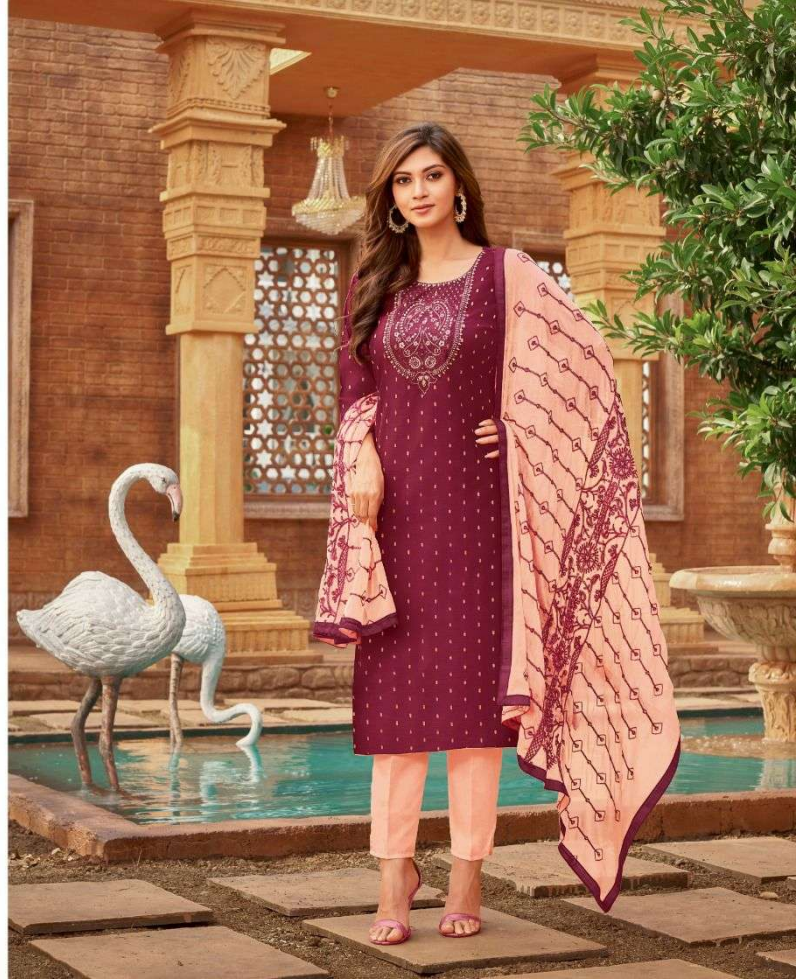
with inner
Vol-9





DRAMA TO DREAMY
*While heading to a wonderful fairy tale wedding
event or even just to bring the drama to dinner*

62001





NETURAL TERRITORY

*Dainty details, natural shade and a whiff of pure bliss, all in all, just
the perfect ensemble for the woman who feels solace in natural elegance.*



62002



A WOMAN'S DREAM

*"Whether you are a bride to be or a fashion goddess with a word to go,
this is one attire that will catch your fancy and stay in your little black book for a long time to come."*


62003





NATURAL SHADE

Downy details natural shade and a whiff of pure bliss call in all just the perfect ensemble for the woman who feels, select an extraordinary one

62004





REGAL EMPIRE

*Feel like you've stepped straight out a regal empire and your
dream of looking like a princess is just accomplished.*



62005





GLITTERING FLAIR

Add some glittering gold to olive palette to add a touch of glam to your attire in a stunner with confident smile

62007





GLITTERING FLAIR

Add some glittering gold to olive palette to add a touch of glam to your attire in a shimmer with confident smile

62007





LIKE A PRINCESS

It's like you've stepped straight out a royal realm and your dream of looking like a princess is just accomplished.



62008



REFLECTING YOU

Feel like you've stepped straight out a royal realm and your dream of looking like a princess is just accomplished.



62009



CATCH YOUR FANCY

*Whether you are a bride to be or a fashion goddess with a novel streak,
this is one attire that will catch your fancy and stay in your little black book for a long time to come.*

62010





62001 ເຊັກຊັມ 62002 ເຊັກຊັມ 62003 ເຊັກຊັມ



62007 ເຊັກຊັມ 62008 ເຊັກຊັມ 62009 ເຊັກຊັມ



62004 ເຊັກຊັມ 62005 ເຊັກຊັມ 62006 ເຊັກຊັມ



62010

