

TOP- CAMBRIC COTTON WITH EMBROIDERY WORK

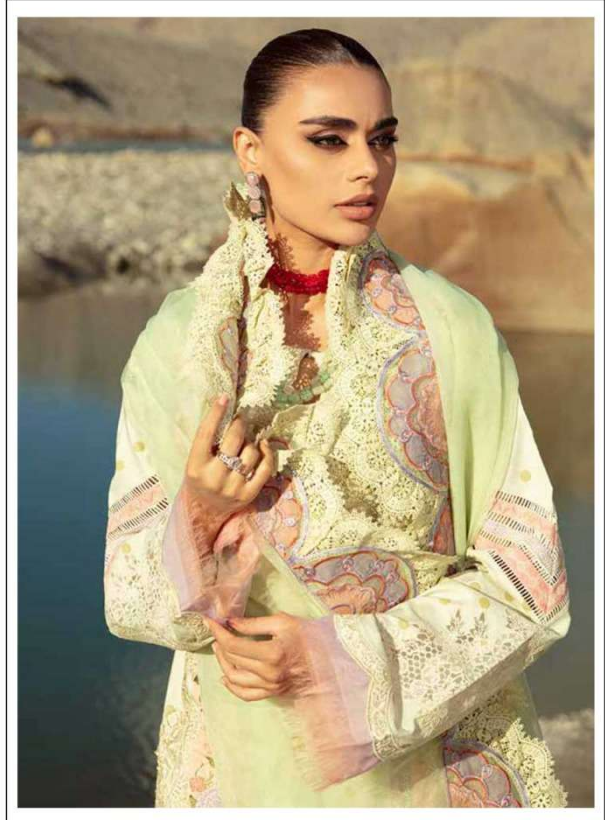
M-259

BOTTOM- SEMI LAWN

DUPATTA- NET WITH EMBROIDERY WORK



☞ DRY CLEAN ONLY.
☞ DO NOT USE ANY BLEACH OR STAIN REMOVING CHEMICAL.
☞ IRON THE FABRIC AT MODERATE TEMPERATURE.



TOP- CAMBRIC COTTON WITH EMBROIDERY WORK

M-259

BOTTOM- SEMI LAWN

DUPATTA- NET WITH EMBROIDERY WORK

- ☑ DRY CLEAN ONLY.
- ☒ DO NOT USE ANY BLEACH OR STAIN REMOVING CHEMICAL.
- ☒ IRON THE FABRIC AT MODERATE TEMPERATURE.



TOP- CAMBRIC COTTON WITH EMBROIDERY WORK

M-260

BOTTOM- SANTOON

DUPATTA- NAZMEEN WITH EMBROIDERY WORK

- ☑ DRY CLEAN ONLY.
- ☒ DO NOT USE ANY BLEACH OR STAIN REMOVING CHEMICAL.
- ☑ IRON THE FABRIC AT MODERATE TEMPERATURE.



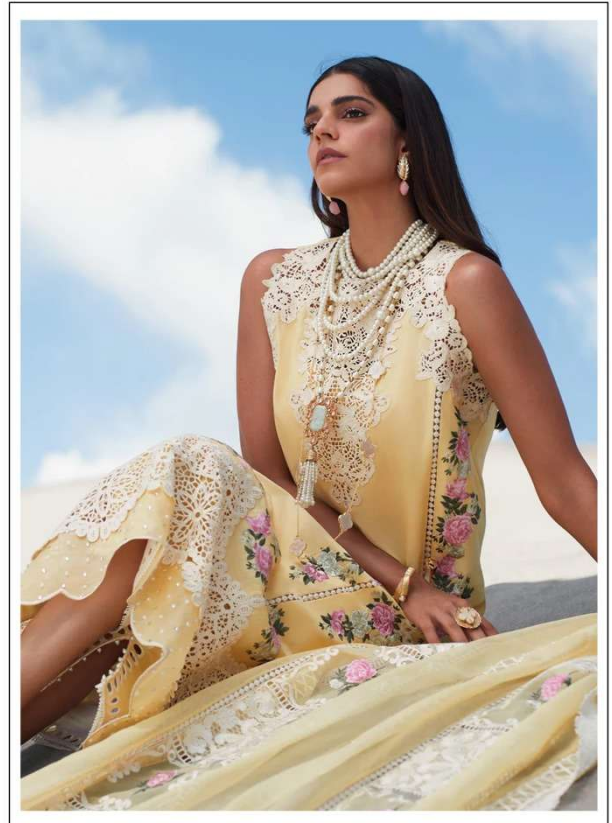
TOP- CAMBRIC COTTON WITH EMBROIDERY WORK

M-261

BOTTOM- SANTOON

DUPATTA- NAZMEEN WITH EMBROIDERY WORK

- ☑ DRY CLEAN ONLY.
- ☒ DO NOT USE ANY BLEACH OR STAIN REMOVING CHEMICAL.
- ☒ IRON THE FABRIC AT MODERATE TEMPERATURE.



TOP- CAMBRIC COTTON WITH EMBROIDERY WORK

M-262 A

BOTTOM- SEMI LAWN

DUPATTA- NET WITH EMBROIDERY WORK

-  DRY CLEAN ONLY.
-  DO NOT USE ANY BLEACH OR STAIN REMOVING CHEMICAL.
-  IRON THE FABRIC AT MODERATE TEMPERATURE.



TOP- CAMBRIC COTTON WITH EMBROIDERY WORK

M-262 B

BOTTOM- SEMI LAWN

DUPATTA- NET WITH EMBROIDERY WORK

-  DRY CLEAN ONLY.
-  DO NOT USE ANY BLEACH OR STAIN REMOVING CHEMICAL.
-  IRON THE FABRIC AT MODERATE TEMPERATURE.