



**READYMAD**  
**#R-1036-D**



**TOP**- ORGENZA WORK WITH EMBROIDERY  
**BOTTOM**- SILK STICHED  
**DUPATTA** - ORGENZA WORK WITH EMBROIDERY

- Ⓟ DRY CLEAN ONLY.
- ⓧ DO NOT USE ANY BLEACH OR STAIN REMOVING CHEMICAL.
- ☎ IRON THE FABRIC AT MODERATE TEMPERATURE.







**READYMAD**  
**#R-1036-D**



**TOP**- ORGENZA WORK WITH EMBROIDERY  
**BOTTOM**- SILK STICHED  
**DUPATTA** - ORGENZA WORK WITH EMBROIDERY

- Ⓟ DRY CLEAN ONLY.
- ⓧ DO NOT USE ANY BLEACH OR STAIN REMOVING CHEMICAL.
- ☎ IRON THE FABRIC AT MODERATE TEMPERATURE.







**READYMAD**  
**#R-1036-E**



**TOP**- ORGENZA WORK WITH EMBROIDERY  
**BOTTOM**- SILK STICHED  
**DUPATTA** - ORGENZA WORK WITH EMBROIDERY

- Ⓟ DRY CLEAN ONLY.
- ⓧ DO NOT USE ANY BLEACH OR STAIN REMOVING CHEMICAL.
- ☎ IRON THE FABRIC AT MODERATE TEMPERATURE.







**READYMAD**  
**#R-1036-F**



**TOP**- ORGENZA WORK WITH EMBROIDERY  
**BOTTOM**- SILK STICHED  
**DUPATTA** - ORGENZA WORK WITH EMBROIDERY

- Ⓟ DRY CLEAN ONLY.
- ⓧ DO NOT USE ANY BLEACH OR STAIN REMOVING CHEMICAL.
- ☎ IRON THE FABRIC AT MODERATE TEMPERATURE.







**READYMAD**  
**#R-1036-G**

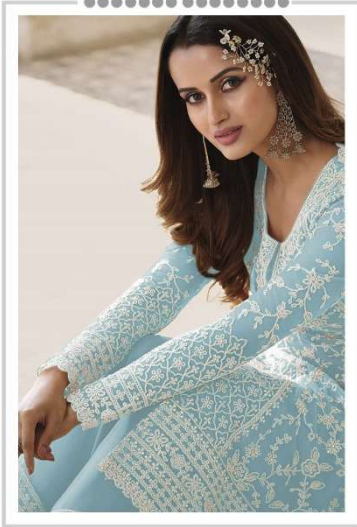


**TOP**- ORGENZA WORK WITH EMBROIDERY  
**BOTTOM**- SILK STICHED  
**DUPATTA** - ORGENZA WORK WITH EMBROIDERY

- Ⓟ DRY CLEAN ONLY.
- ⓧ DO NOT USE ANY BLEACH OR STAIN REMOVING CHEMICAL.
- ☎ IRON THE FABRIC AT MODERATE TEMPERATURE.



**Ramsha**<sup>®</sup>  
1036-NX



**SIZE - XL**  
**READYMAD**

**Ramsha**<sup>®</sup>  
1036-NX



#R-1036-D



#R-1036-E



#R-1036-F



#R-1036-G