

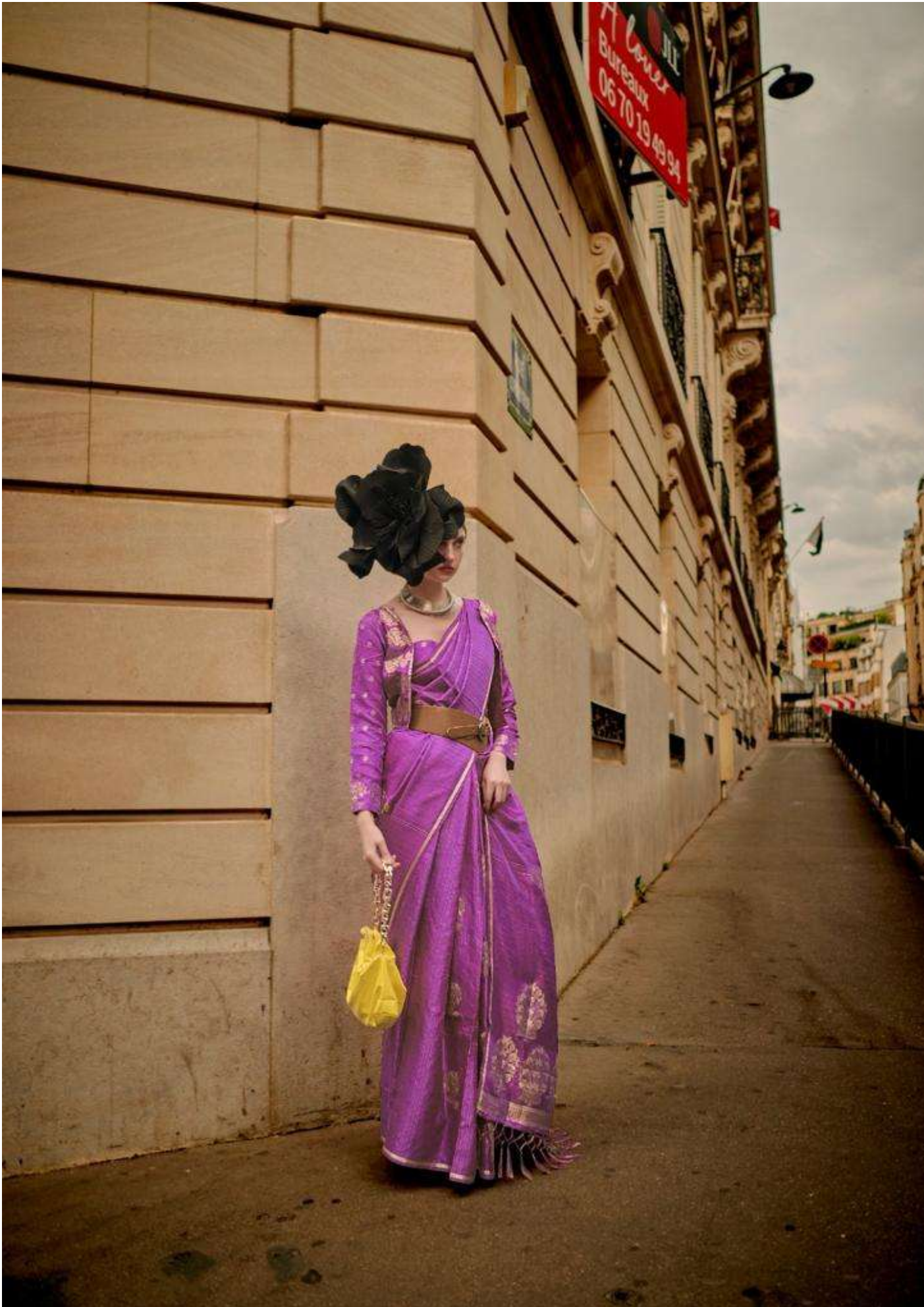
A woman is the central figure, wearing a vibrant purple silk saree with intricate gold Zari patterns. She is also wearing a black wide-brimmed hat and long black gloves with gold detailing. She is leaning against a light-colored stone wall with horizontal architectural lines. The background shows a building entrance with a red door and a stone archway.

RAJTEX  
*collections*  
menswear | womenswear | kids

# KRONICLE SILK

क्रोनिकल सिल्क

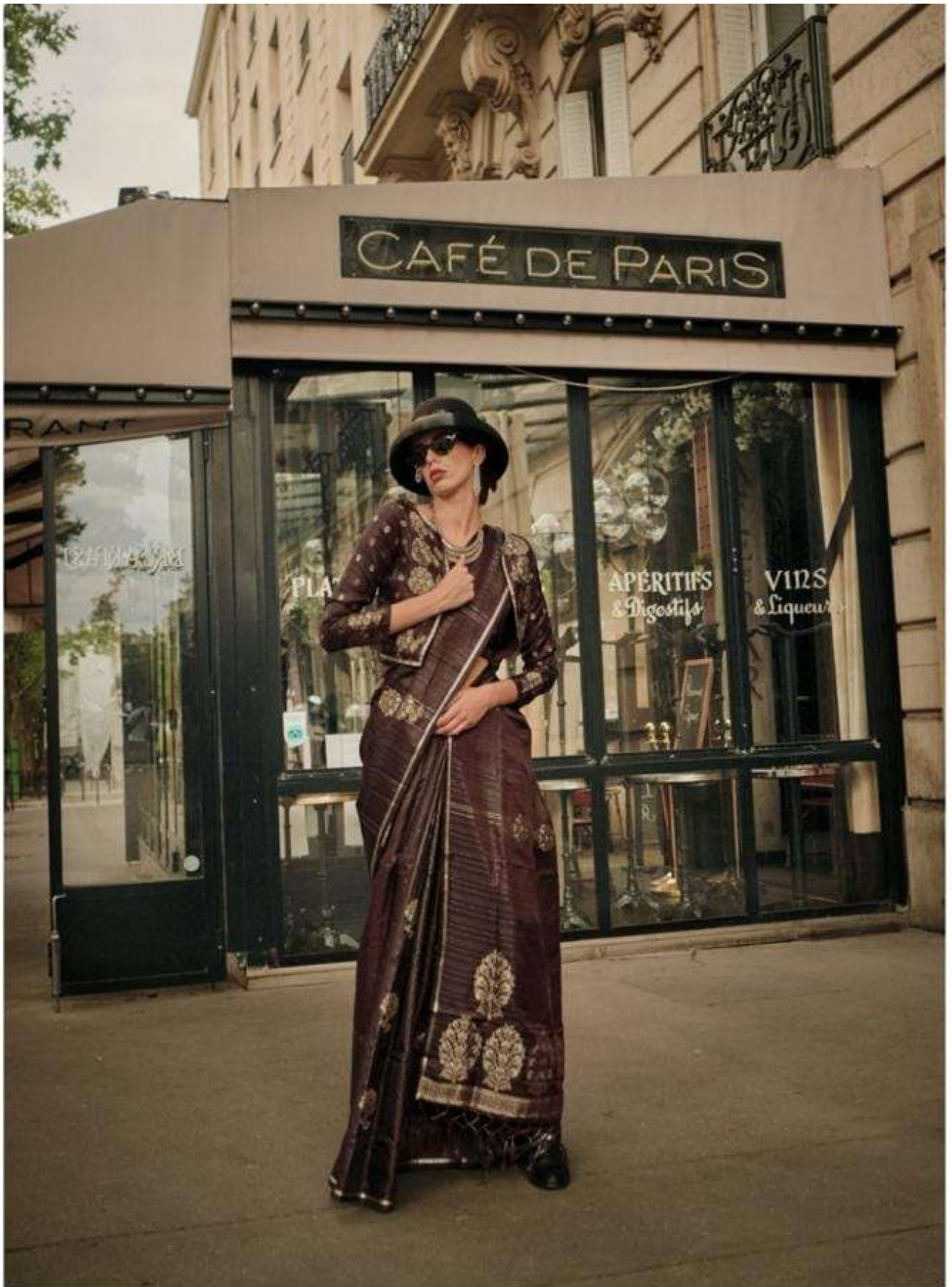
PURE SATIN ZARI LINING HANDLOOM WEAVING

































344001



344002



344003



344004



344005



344006



344007