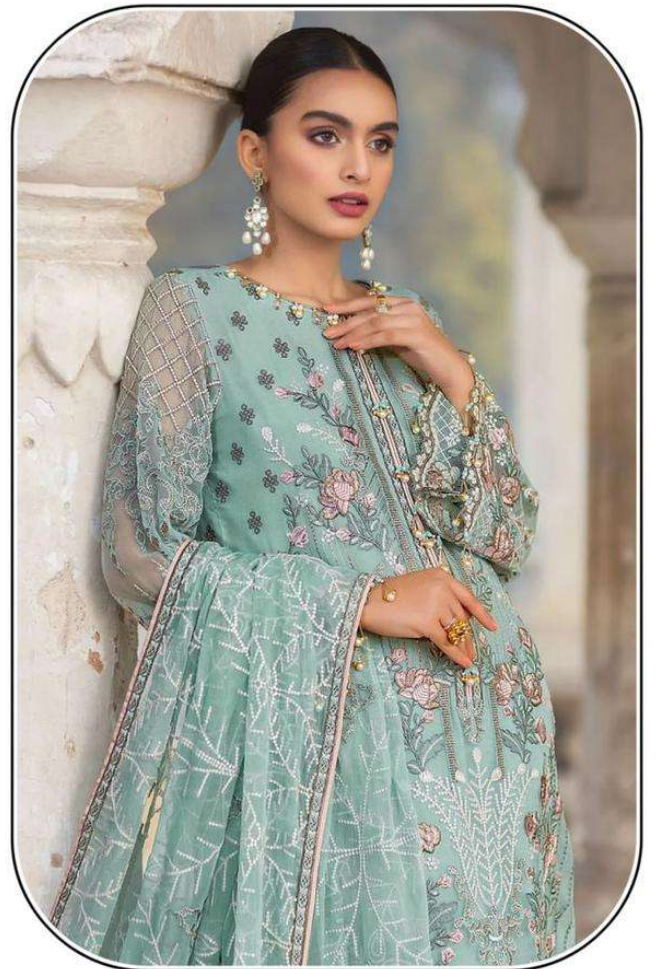




SHANAYA®



**WASHING INSRUCTIONS**

DO NOT USE TYPE OF BLEACH OR STAIN REMOVING CHEMICALS BEFORE CUTTING / STITHING , FABRIC SHOULD BE SMOKED BE SOAKED IN WATER ( ALL COMPONENTS SEPARATELY ) FOR 15 MINUTES  
DO BOT KEEP WET FABRIC IN TWISTED FROM IN ORDER TO AVOID COPY MARKS I  
IRON CLOTHES AT MODRATE TEMPERATURE I DO NOT DRY FABRIC IN DIRECT SUNLIGHT  
( EXTRA LACES, HANGINGS AND ACCESSORIES ARE NOT INDOUED )

**ROSE**  
Hand Craft  
5-144





SHANAYA®



**WASHING INSTRUCTIONS**

DO NOT USE TYPE OF BLEACH OR STAIN REMOVING CHEMICALS BEFORE CUTTING / STITCHING, FABRIC SHOULD BE SOAKED IN WATER ( ALL COMPONENTS SEPARATELY ) FOR 15 MINUTES  
DO NOT KEEP WET FABRIC IN TWISTED FORM IN ORDER TO AVOID COPY MARKS | IRON CLOTHES AT MODERATE TEMPERATURE | DO NOT DRY FABRIC IN DIRECT SUNLIGHT ( EXTRA LACES, HANGINGS AND ACCESSORIES ARE NOT INCLUDED )

**ROSE**  
Hand Craft  
5-144



