

A woman with long dark hair is the central figure, wearing a dark-colored dress with a repeating diamond-shaped floral pattern in shades of red, gold, and green. She is also wearing a black shawl draped over her left shoulder. Her accessories include a headband with small white flowers and long, multi-strand earrings. She is looking down and to her left, with her right arm raised, holding a piece of maroon fabric. The background is a soft-focus outdoor setting with greenery and a building with a red awning.

  
POONAM  
DESIGNER

Riwaz





BRIDE & BEAUTIFUL



POONAM  
DESIGN

10001

  
POONAM  
DESIGNER



  
THE TREND SETTER



10002





10003



POONAM  
DESIGNER





UPDATE PASTE STYLE







RISE AND SHINE

POONAM  
DESIGNER

10005



BRIDE & BEAUTIFUL



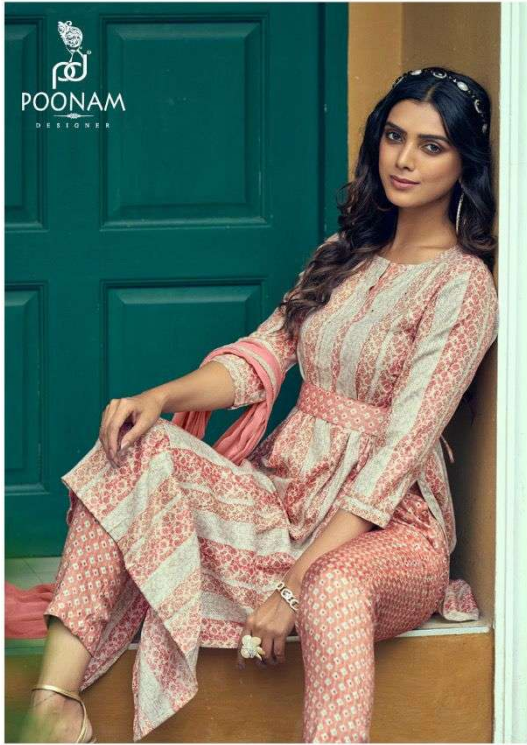




THE TREND SETTER



UPDATE PASTE STYLE



POONAM  
DESIGNER

10008







10001



10002



10003



10007



10004



10005



10006



10008

**M, L, XL, XXL**