



**TOP- DULL ORGANZA WITH HEAVY EMBROIDERY**

**M-227-C**

**BOTTOM/INNER- SANTOON**

**DUPATTA - NET WITH HEAVY EMBROIDERY**

**☉ DRY CLEAN ONLY.**  
**✗ DO NOT USE ANY BLEACH OR STAIN REMOVING CHEMICAL.**  
**☎ IRON THE FABRIC AT MODERATE TEMPERATURE.**



**TOP- DULL ORGANZA WITH HEAVY EMBROIDERY**

**M-227-A**

**BOTTOM/INNER- SANTOON**

**DUPATTA - NET WITH HEAVY EMBROIDERY**

**☞ DRY CLEAN ONLY.**  
**☒ DO NOT USE ANY BLEACH OR STAIN REMOVING CHEMICAL.**  
**☒ IRON THE FABRIC AT MODERATE TEMPERATURE.**

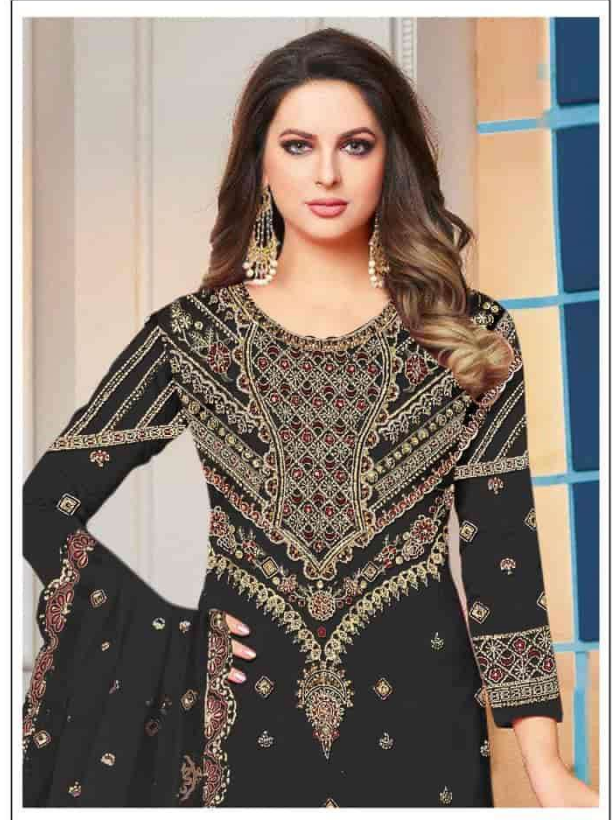


MUSHO

*A brand by itself*



Material: 100% Cotton	Color: Beige
Length: Full Length	Style: Traditional
Occasion: Wedding, Party	Brand: MUSHO



**TOP- DULL ORGANZA WITH HEAVY EMBROIDERY**

**M-227-B**

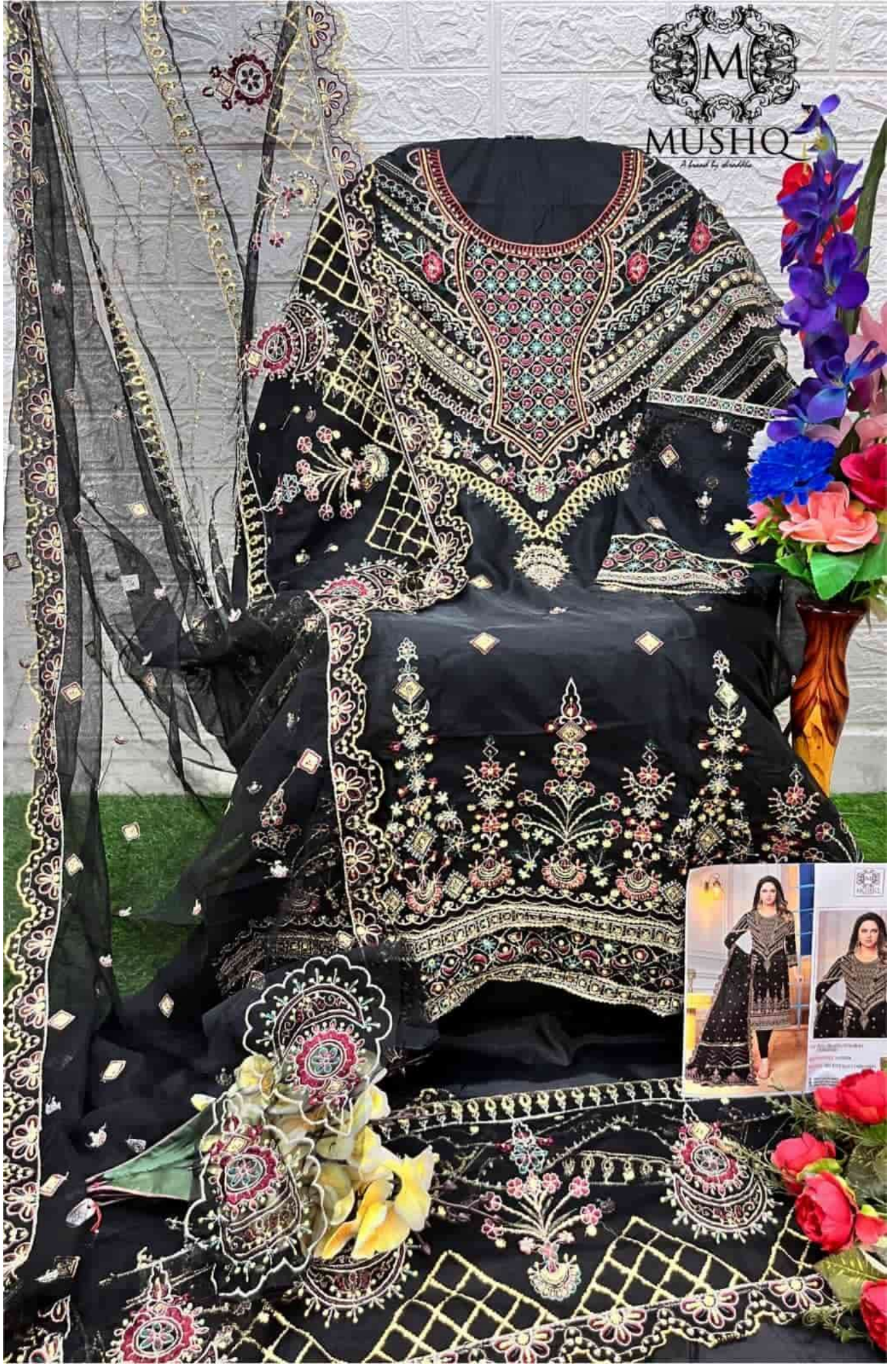
**BOTTOM/INNER- SANTOON**

**DUPATTA - NET**

**☉ DRY CLEAN ONLY.**  
**✗ DO NOT USE ANY BLEACH OR STAIN REMOVING CHEMICAL.**  
**☼ IRON THE FABRIC AT MODERATE TEMPERATURE.**



M  
MUSHIQ  
*A brand by shudha*





**TOP- DULL ORGANZA WITH HEAVY EMBROIDERY**

M-227-C

**BOTTOM/INNER- SANTOON**

**DUPATTA - NET WITH HEAVY EMBROIDERY**

☞ DRY CLEAN ONLY.  
☒ DO NOT USE ANY BLEACH OR STAIN REMOVING CHEMICAL.  
☒ IRON THE FABRIC AT MODERATE TEMPERATURE.



MUSHQ

*A brand by aban*





**TOP- DULL ORGANZA WITH HEAVY EMBROIDERY**

**M-227-D**

**BOTTOM/INNER- SANTOON**

**DUPATTA - NET WITH HEAVY EMBROIDERY**

**☉ DRY CLEAN ONLY.**  
**✗ DO NOT USE ANY BLEACH OR STAIN REMOVING CHEMICAL.**  
**☎ IRON THE FABRIC AT MODERATE TEMPERATURE.**



M  
MUSHQ  
*By Farah Ali*






**EME MUSHQ**

**TOP- DULL ORGANZA WITH HEAVY EMBROIDERY** (M-227-A)

**BOTTOMINNER- SANTOON**

**DUPATTA- NET WITH HEAVY EMBROIDERY**

Ⓢ DRY CLEAN ONLY  
Ⓢ DO NOT USE ANY BLEACH OR STAIN REMOVING CHEMICAL  
Ⓢ IRON THE FABRIC AT MODERATE TEMPERATURE




**EME MUSHQ**

**TOP- DULL ORGANZA WITH HEAVY EMBROIDERY** (M-227-D)

**BOTTOMINNER- SANTOON**

**DUPATTA- NET WITH HEAVY EMBROIDERY**

Ⓢ DRY CLEAN ONLY  
Ⓢ DO NOT USE ANY BLEACH OR STAIN REMOVING CHEMICAL  
Ⓢ IRON THE FABRIC AT MODERATE TEMPERATURE




**EME MUSHQ**

**TOP- DULL ORGANZA WITH HEAVY EMBROIDERY** (M-227-C)

**BOTTOMINNER- SANTOON**

**DUPATTA- NET WITH HEAVY EMBROIDERY**

Ⓢ DRY CLEAN ONLY  
Ⓢ DO NOT USE ANY BLEACH OR STAIN REMOVING CHEMICAL  
Ⓢ IRON THE FABRIC AT MODERATE TEMPERATURE




**EME MUSHQ**

**TOP- DULL ORGANZA WITH HEAVY EMBROIDERY** (M-227-B)

**BOTTOMINNER- SANTOON**

**DUPATTA- NET**

Ⓢ DRY CLEAN ONLY  
Ⓢ DO NOT USE ANY BLEACH OR STAIN REMOVING CHEMICAL  
Ⓢ IRON THE FABRIC AT MODERATE TEMPERATURE