

HEER™

Mashaallah







Heer

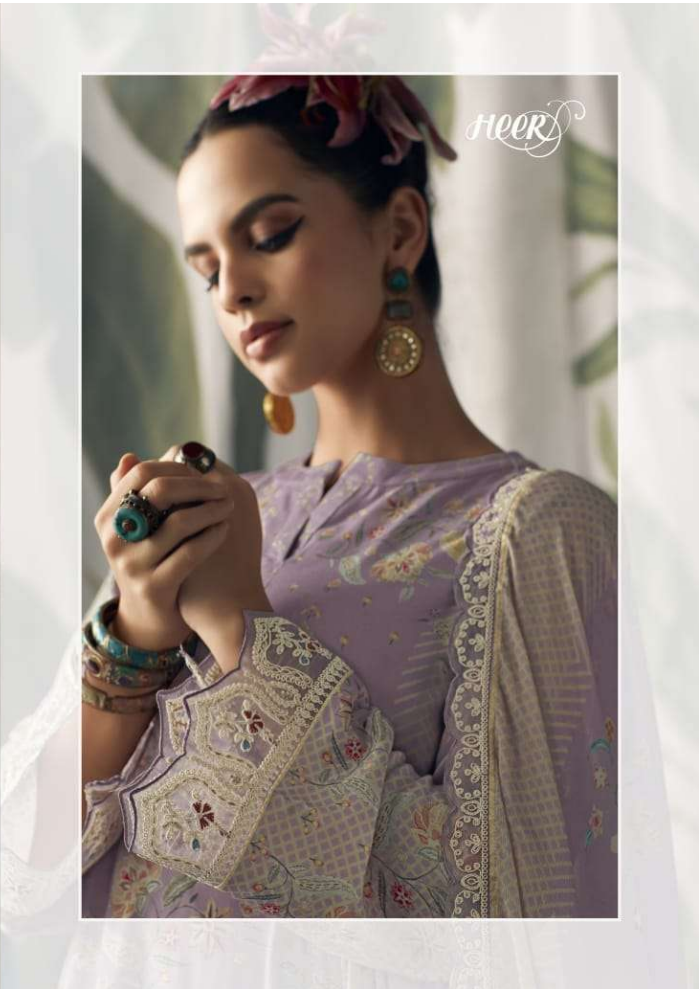
WASHALLAH | 9222







MASHALLAH | 9224







Mashaallah

TOP

Pure pashmina staple with digital print ,cream dori scalloped embroidery on hemline and sleeves

DUPATTA

Pure chinon with digital print and cream dori scalloped four side embroidery border

BOTTOM

Pure pashmina staple with cream dori embroidery on front

HEER



| 9221 |



| 9222 |

Heer



| 9223 |



| 9224 |

Mashaallah



| 9225 |



| 9226 |



| 9227 |



| 9228 |