

jr

JOH RIVAAJ

# Jacala

Vol-630







*The perfect matching accessory for a saree is not the jewelry but your smile.*



jr  
JOH RIVAAJ

63003







JOH RIVAAJ



*A sari never tells you to suit in. It causes you to stand out.*

63005







JOH RIVAAJ



*Some girls are born to be nice. Others are born to wear a beautiful saree.*

**63010**





  
JOH RIVAAJ



*Nothing makes an Indian  
girl look as beautiful as a  
saree does*  
**63011**



  
JOH RIVAAJ

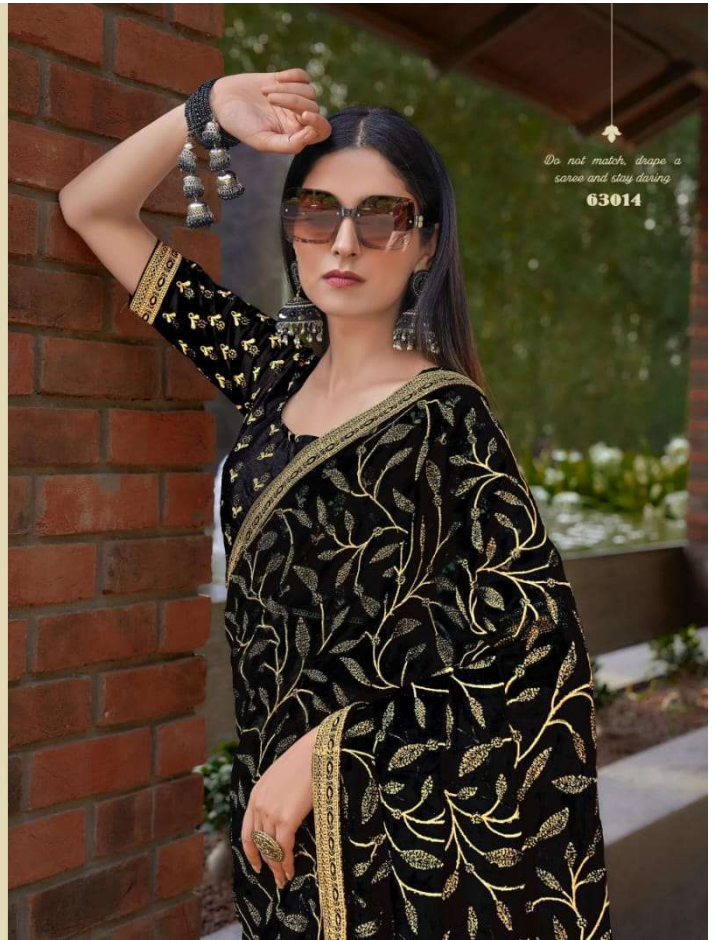
63012



JOH RIVAAJ



*No Indian girl can ever say no  
to the magic of saree*  
**63013**







*The perfect matching does  
not exist for a saree. It is not the  
saree but your smile.*

**63016**



JOH RIVAAJ





JOH RIVAAJ



*Women and saris have  
been completing each  
other with timeless magic*

63018



*A saree makes me feel so graceful yet so powerful.*



63019

JOH RIVAAJ



  
**JOH RIVAAJ**

| <b>JACALA</b> |                     |             |
|---------------|---------------------|-------------|
| <b>SR NO.</b> | <b><i>D NO.</i></b> | <b>RATE</b> |
| 1             | <i>jacala-63001</i> | 2395/-      |
| 2             | <i>jacala-63002</i> | 2695/-      |
| 3             | <i>jacala-63003</i> | 2595/-      |
| 4             | <i>jacala-63004</i> | 2395/-      |
| 5             | <i>jacala-63005</i> | 1995/-      |
| 6             | <i>jacala-63006</i> | 1695/-      |
| 7             | <i>jacala-63007</i> | 2995/-      |
| 8             | <i>jacala-63008</i> | 3995/-      |
| 9             | <i>jacala-63009</i> | 1995/-      |
| 10            | <i>jacala-63010</i> | 2395/-      |
| 11            | <i>jacala-63011</i> | 1695/-      |
| 12            | <i>jacala-63012</i> | 1695/-      |
| 13            | <i>jacala-63013</i> | 2195/-      |
| 14            | <i>jacala-63014</i> | 3195/-      |
| 15            | <i>jacala-63015</i> | 2895/-      |
| 16            | <i>jacala-63016</i> | 1695/-      |
| 17            | <i>jacala-63017</i> | 2195/-      |
| 18            | <i>jacala-63018</i> | 2195/-      |
| 19            | <i>jacala-63019</i> | 1895/-      |