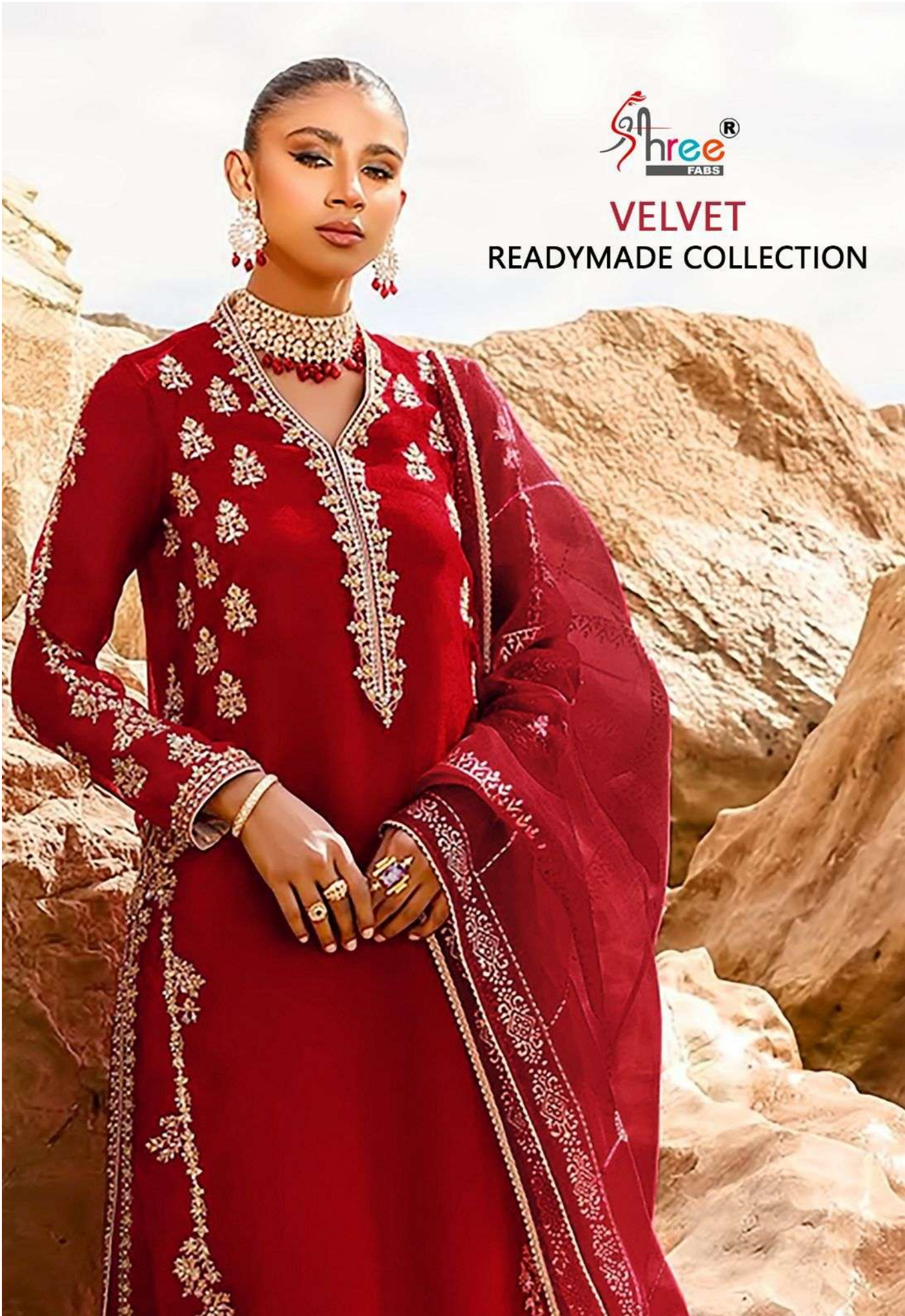


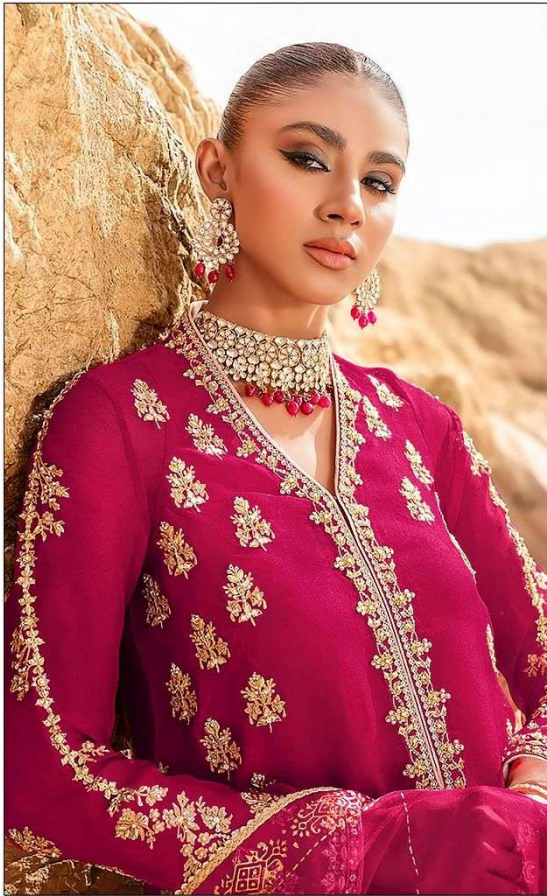


VELVET
READYMADE COLLECTION





VELVET
READYMADE COLLECTION

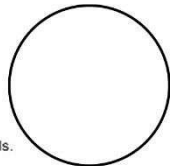


R-1185

Care Instructions



- >Dry clean recommended
- >Do not use anytype of bleach or stain removing chemicals.
- >Do not overexpose damp fabrics to strong sunlight.
- >Iron at moderate temperature.





VELVET
READYMADE COLLECTION



R-1185-B

Care Instructions



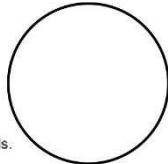
NO CHEMICALS
NO BLEACH
NO DRY CLEAN
NO IRON

> Dry clean recommended

> Do not use any type of bleach or stain removing chemicals.

> Do not overexpose damp fabrics to strong sunlight.

> Iron at moderate temperature.





VELVET
READYMADE COLLECTION



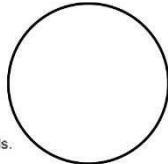
R-1185-C

Care Instructions

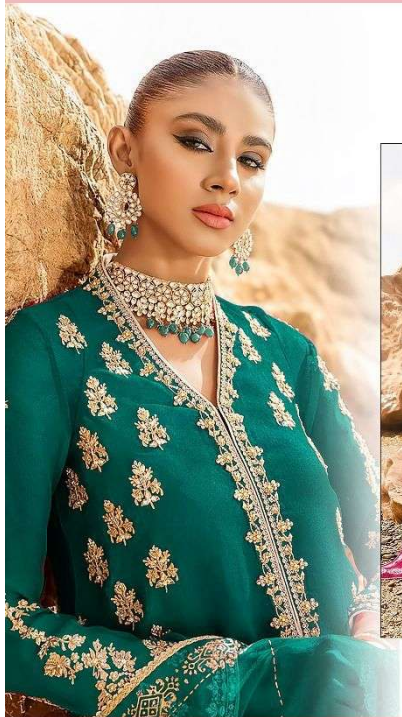


NO BLEACH DRY CLEAN ONLY IRON AT MODERATE TEMPERATURE

- > Dry clean recommended
- > Do not use any type of bleach or stain removing chemicals.
- > Do not overexpose damp fabrics to strong sunlight.
- > Iron at moderate temperature.



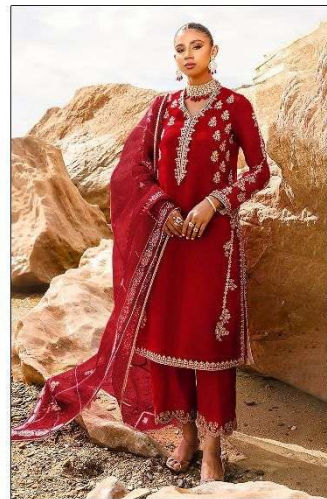
VELVET
READYMADE COLLECTION



R-1185



R-1185-B



R-1185-C