

M-282 A



FEBRIC DETAIL

TOP:- PURE DULL ORGANZA EMBROIDERED WORK WITH MOTI WORK

BOTTOM/INNER:- SANTOON WITH WORK

DUPATA:- PURE Orngza WITH EMBROIDERY WORK WITH CUTWORK

☐ DRY CLEAN ONLY.
✗ DO NOT USE ANY BLEACH OR STAIN REMOVING CHEMICAL.
☐ IRON THE FABRIC AT MODERATE TEMPERATURE.





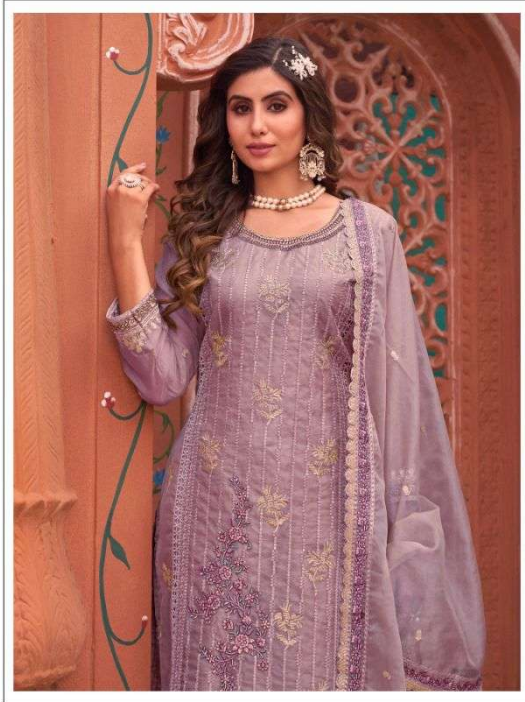
MUSHQ
A brand by shraddha



M-352 A

FABRIC DETAIL
TOP: PURE SILK
BOTTOM: PURE SILK
EMBROIDERY: HAND-EMBROIDERED
CARE: WASH IN COLD WATER





M-282 B



FEBRIC DETAIL

TOP:- PURE DULL ORGANZA EMBROIDERED WORK WITH MOTI WORK

BOTTOM/INNER:- SANTOON WITH WORK

DUPATA:- PURE Orngza WITH EMBROIDERY WORK WITH CUTWORK

☐ DRY CLEAN ONLY.
 ✘ DO NOT USE ANY BLEACH OR STAIN REMOVING CHEMICAL.
 ☐ IRON THE FABRIC AT MODERATE TEMPERATURE.





MUSHQ

A brand by shradha





M-282 C



FEBRIC DETAIL

TOP:- PURE DULL ORGANZA EMBROIDERED WORK WITH MOTI WORK

BOTTOM/INNER:- SANTOON WITH WORK

DUPATA:- PURE Orngza WITH EMBROIDERY WORK WITH CUTWORK

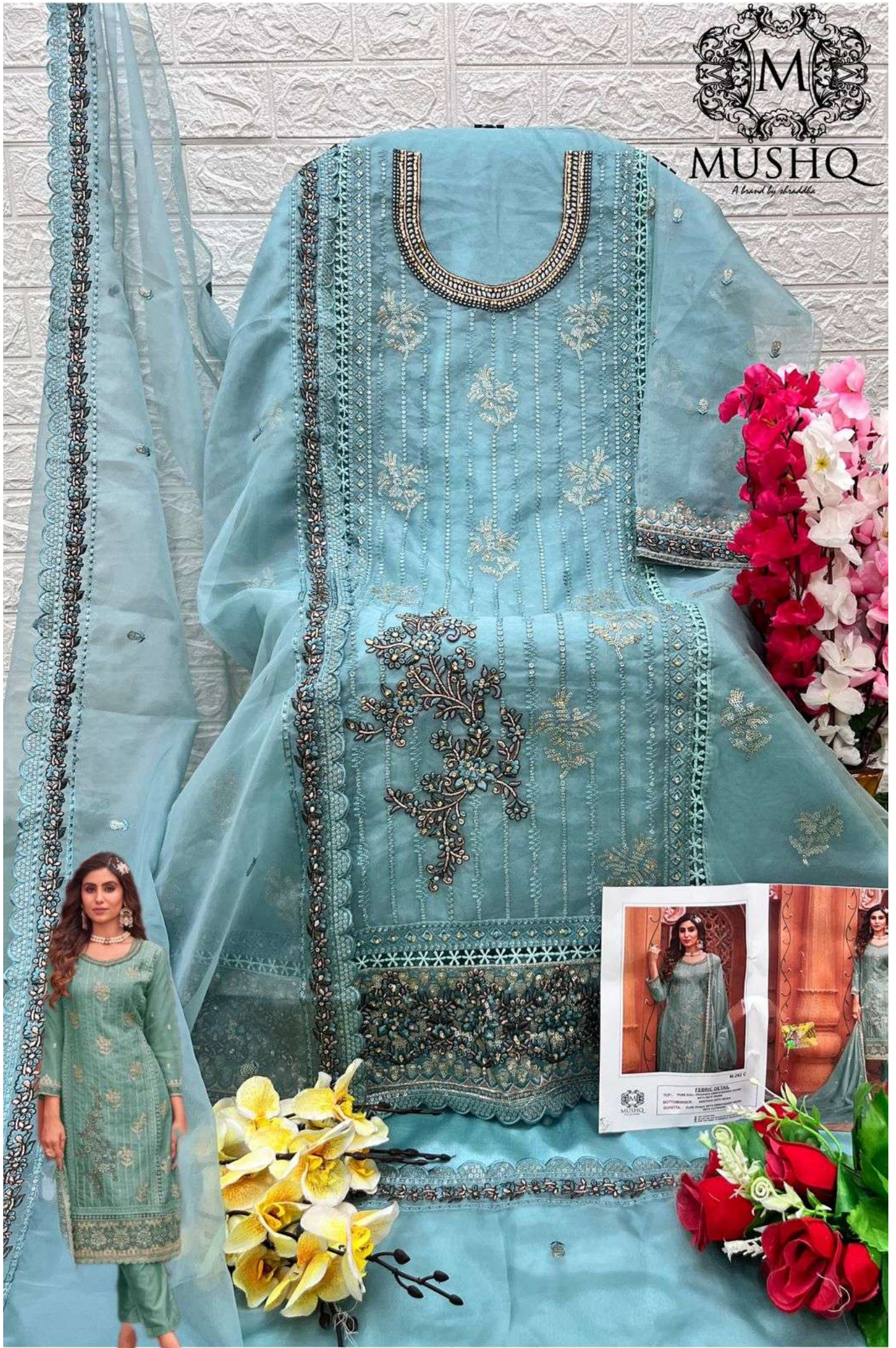
☐ DRY CLEAN ONLY.
 ✘ DO NOT USE ANY BLEACH OR STAIN REMOVING CHEMICAL.
 ☐ IRON THE FABRIC AT MODERATE TEMPERATURE.





MUSHQ

A brand by abradella





M-282 D



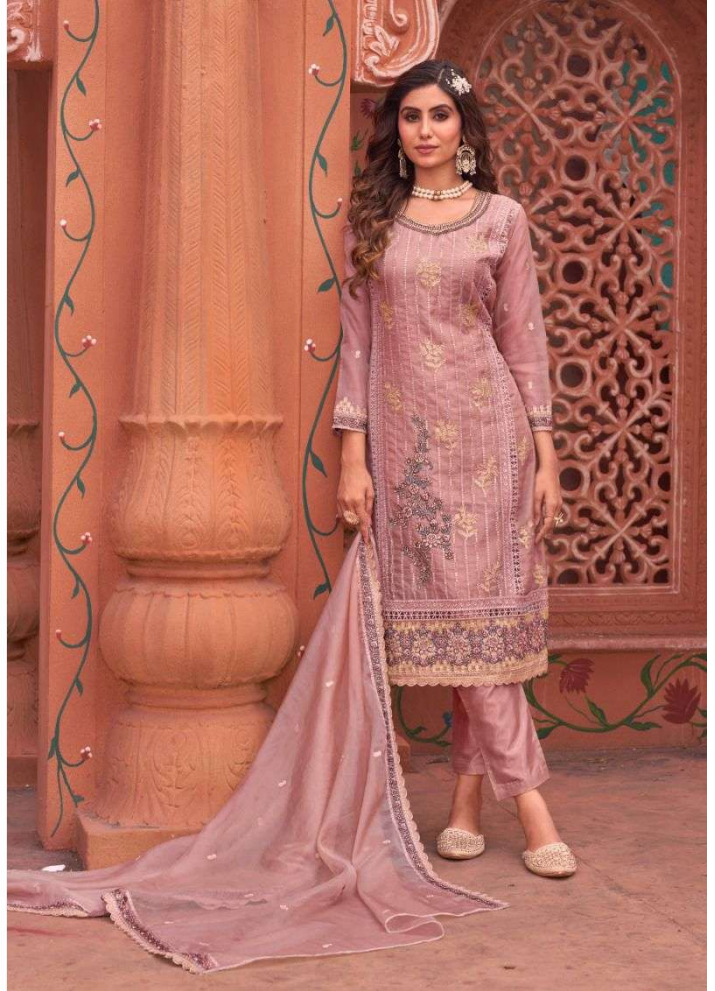
FEBRIC DETAIL

TOP:- PURE DULL ORGANZA EMBROIDERED WORK WITH MOTI WORK

BOTTOM/INNER:- SANTOON WITH WORK

DUPATA:- PURE Orngza WITH EMBROIDERY WORK WITH CUTWORK

☐ DRY CLEAN ONLY.
 ✘ DO NOT USE ANY BLEACH OR STAIN REMOVING CHEMICAL.
 ☐ IRON THE FABRIC AT MODERATE TEMPERATURE.





MUSHQ
A brand by shradha



M-082 D

FABRIC DETAIL
TOP: PURE DOLA KAMLESHI (KAMLESHI) WITH ZARI WORK
BOTTOMWEAR: KAMLESHI WITH ZARI WORK
DUPATTA: PURE DOLA KAMLESHI (KAMLESHI) WITH ZARI WORK

MUSHQ

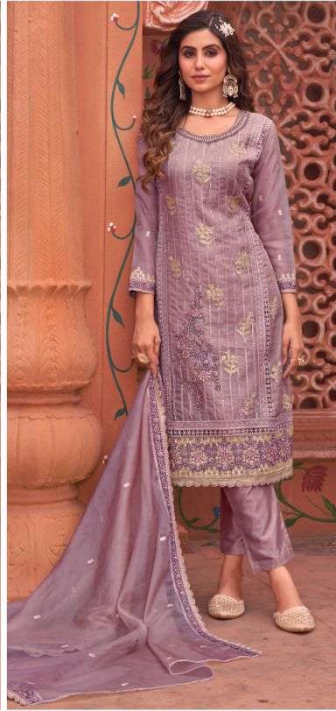


FEBRIC DETAIL

TOP:- PURE DULL ORGANZA EMBROIDERED WORK
WITH MOTI WORK
BOTTOM/INNER:- SANTOON WITH WORK
DUPATTA:- PURE Orngza WITH EMBROIDERY WORK
WITH CUTWORK



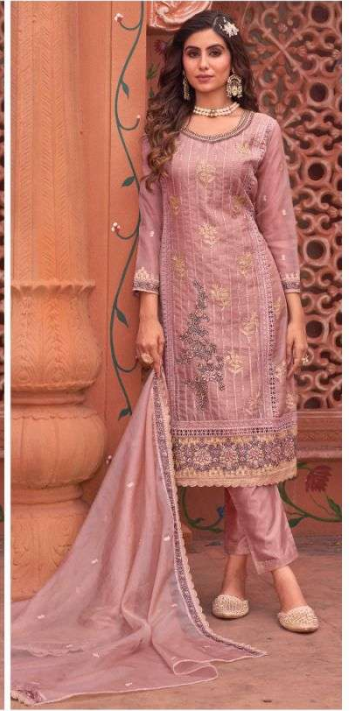
M-282 A



M-282 B



M-282 C



M-282 D