



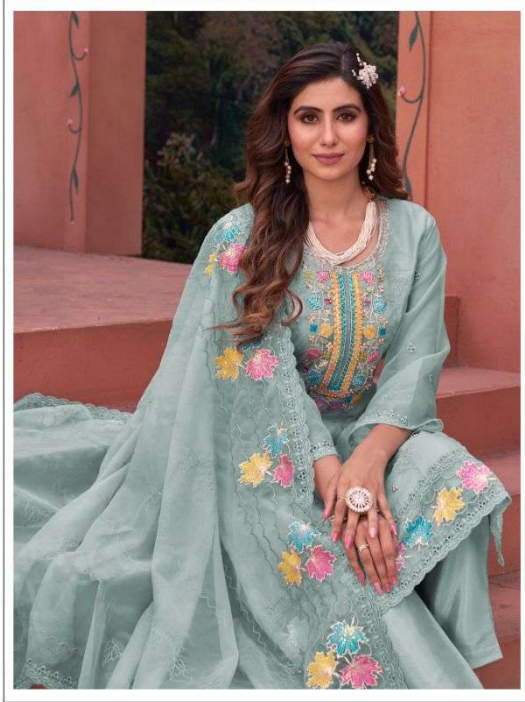
MUSHQ
A brand by Stradella



M 264 B

FABRIC DETAIL
TOP: PURE SILK, BLENDED WITH COTTON
BOTTOM: PURE SILK, BLENDED WITH COTTON
EMBROIDERY: HAND-EMBROIDERED WITH GOLD TONE





M-284 A



FEBRIC DETAIL

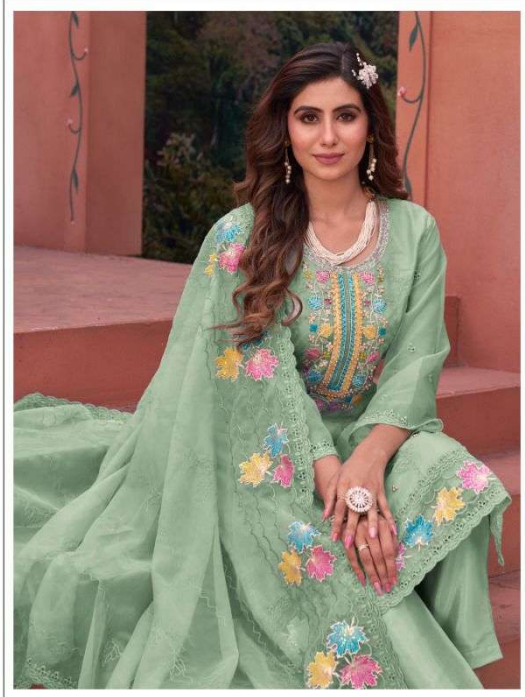
TOP:- PURE DULL ORGANZA EMBROIDERED WORK WITH MOTI WORK

BOTTOM/INNER:- SANTOON WITH WORK

DUPATTA:- PURE Orngza WITH EMBROIDERY WORK WITH CUTWORK

☑ DRY CLEAN ONLY.
✗ DO NOT USE ANY BLEACH OR STAIN REMOVING CHEMICAL.
☑ IRON THE FABRIC AT MODERATE TEMPERATURE.





M-284 B



FEBRIC DETAIL

TOP:- PURE DULL ORGANZA EMBROIDERED WORK WITH MOTI WORK

BOTTOM/INNER:- SANTOON WITH WORK

DUPATTA:- PURE Orngza WITH EMBROIDERY WORK WITH CUTWORK

☐ DRY CLEAN ONLY.
 ✘ DO NOT USE ANY BLEACH OR STAIN REMOVING CHEMICAL.
 ☐ IRON THE FABRIC AT MODERATE TEMPERATURE.





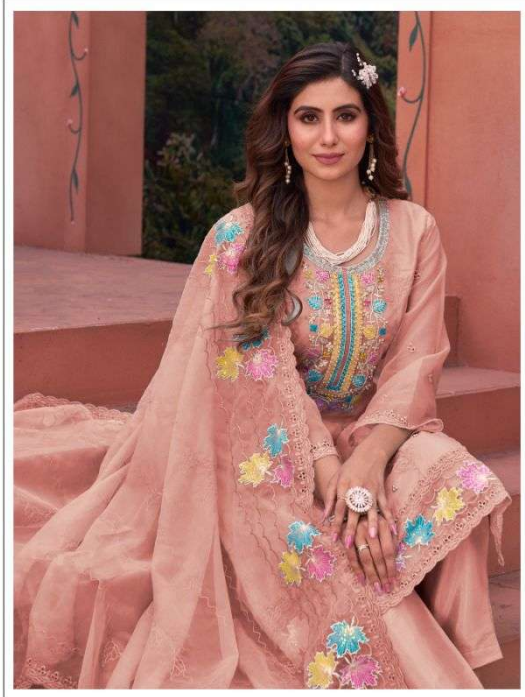
MUSHQ
A brand by Stradella



M 264 B

FABRIC DETAIL
TOP: PURE SILK, BLENDED WITH COTTON
BOTTOM: PURE SILK, BLENDED WITH COTTON
EMBROIDERY: HAND-EMBROIDERED WITH GOLD TONE





M-284 C



FEBRIC DETAIL

TOP:- PURE DULL ORGANZA EMBROIDERED WORK WITH MOTI WORK

BOTTOM/INNER:- SANTOON WITH WORK

DUPATTA:- PURE Orngza WITH EMBROIDERY WORK WITH CUTWORK

☑ DRY CLEAN ONLY.
 ✗ DO NOT USE ANY BLEACH OR STAIN REMOVING CHEMICAL.
 ☑ IRON THE FABRIC AT MODERATE TEMPERATURE.

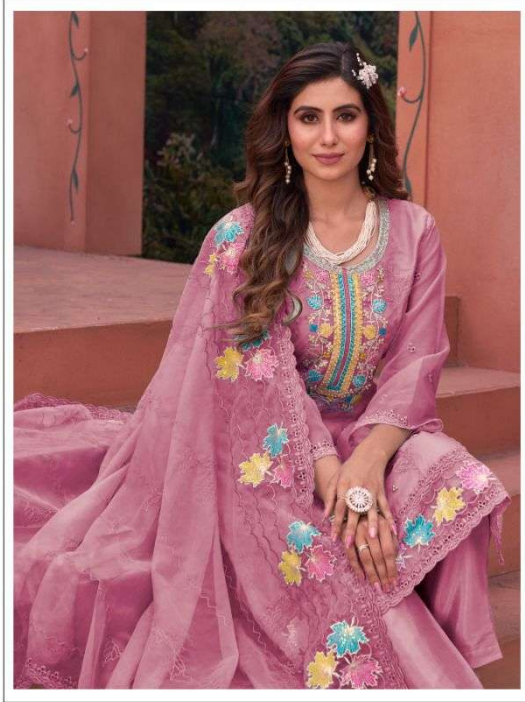




MUSHIQ
A brand by shradika



FABRIC DETAIL
100% Pure Cotton
Machine Washable
Dry Clean Recommended
M-204 C



M-284 D



FEBRIC DETAIL

TOP:- PURE DULL ORGANZA EMBROIDERED WORK WITH MOTI WORK

BOTTOM/INNER:- SANTOON WITH WORK

DUPATTA:- PURE Orngza WITH EMBROIDERY WORK WITH CUTWORK

☑ DRY CLEAN ONLY.
✗ DO NOT USE ANY BLEACH OR STAIN REMOVING CHEMICAL.
☑ IRON THE FABRIC AT MODERATE TEMPERATURE.





MUSHQ
A brand by shreetha





MUSHQ
Ascribed by the subtle





FEBRIC DETAIL

TOP:- PURE DULL ORGANZA EMBROIDERED WORK
WITH MOTI WORK
BOTTOM/INNER:- SANTOON WITH WORK
DUPATTA:- PURE Orngza WITH EMBROIDERY WORK
WITH CUTWORK



M-284 A



M-284 B



M-284 C



M-284 D