

A woman with long dark hair is wearing a vibrant, multi-colored dress with a complex pattern of green, blue, and purple. She is holding a large bouquet of white and pink flowers. The background is a soft, out-of-focus outdoor setting. In the top right corner, there is a logo consisting of a stylized 'S' with a red and white crescent shape integrated into it.

SS

Charizma

range bahar



PUT YOUR IRON HAND IN A GLOVE



3311



A THRONE IS ONLY A BENCH COVERED



3312





3313



LIVE LIKE THE VELVET MOLE



3314

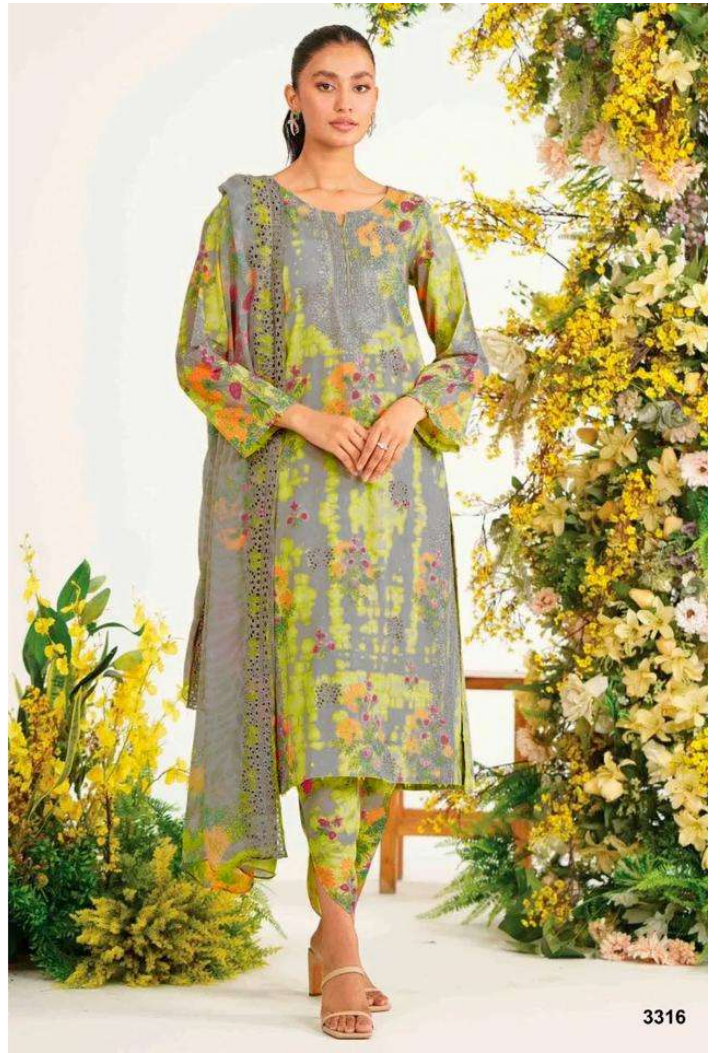


PUT YOUR IRON HAND IN A GLOVE



3315

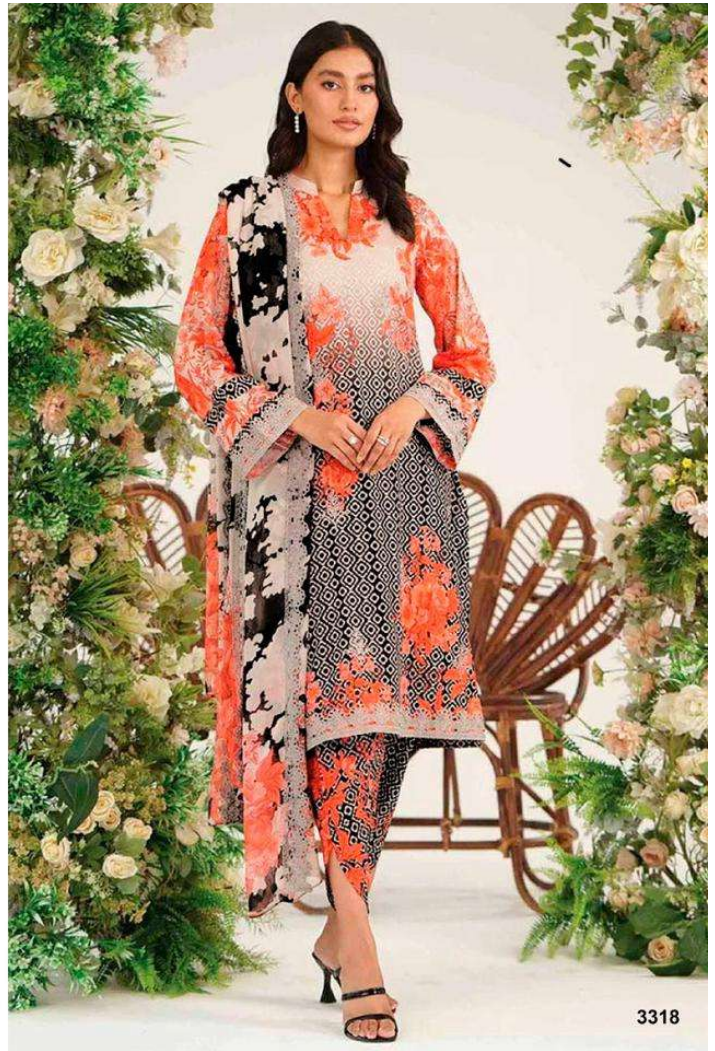
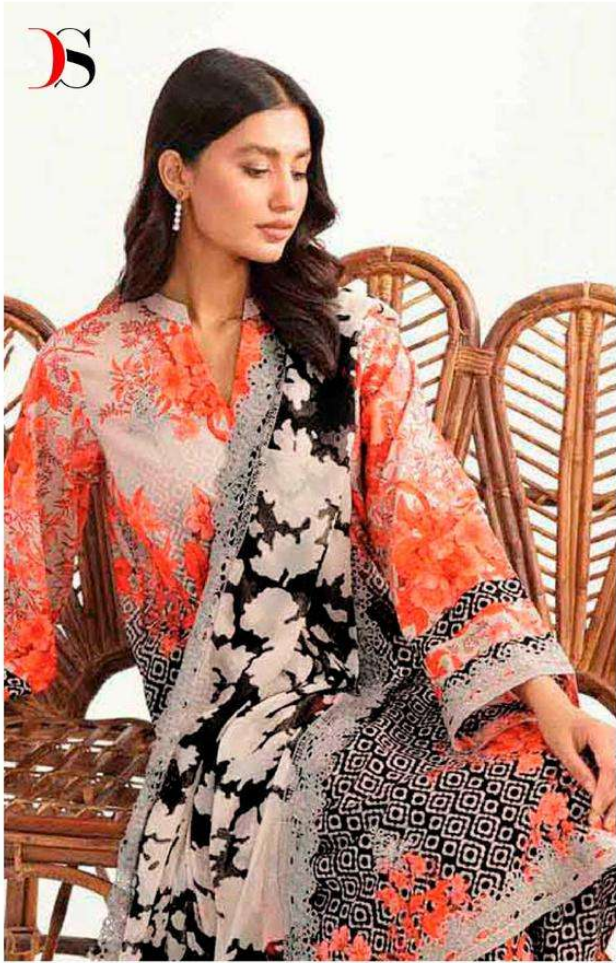






GO BURROW UNDERGROUND







Charizma

rang e bahar



3311

3312



3315

3316



3313

3314



3317

3318