

M
MUSHIQ
A brand by shradika





M-290 A



FEBRIC DETAIL

TOP:- PURE DULL ORGANZA EMBROIDERED WORK WITH MOTI WORK

BOTTOMINNER:- SANTOON

DUPATTA:- PURE ORGANZA WITH EMBROIDERED WORK WITH CUT WORK

☉ DRY CLEAN ONLY.
⚠ DO NOT USE ANY BLEACH OR STAIN REMOVING CHEMICAL.
☐ IRON THE FABRIC AT MODERATE TEMPERATURE.



M
MUSHIQ
A brand by shradika





M-290 B



FEBRIC DETAIL

TOP:- PURE DULL ORGANZA EMBROIDERED WORK WITH MOTI WORK

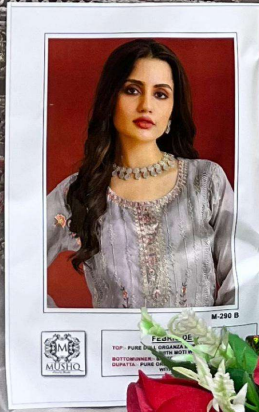
BOTTOMINNER:- SANTOON

DUPATTA:- PURE ORGANZA WITH EMBROIDERED WORK WITH CUT WORK

☉ DRY CLEAN ONLY.
⚠ DO NOT USE ANY BLEACH OR STAIN REMOVING CHEMICAL.
☐ IRON THE FABRIC AT MODERATE TEMPERATURE.



M
MUSHQ
A brand by shradha



Exclusive of
TOP PURE SILK GARMENTS
MUSHQ
M-290 B



M-290 C



FEBRIC DETAIL

TOP:- PURE DULL ORGANZA EMBROIDERED WORK WITH MOTI WORK

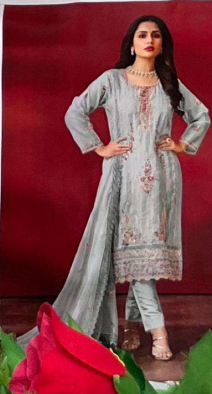
BOTTOMINNER:- SANTOON

DUPATTA:- PURE ORGANZA WITH EMBROIDERED WORK WITH CUT WORK

☉ DRY CLEAN ONLY.
⚠ DO NOT USE ANY BLEACH OR STAIN REMOVING CHEMICAL.
☐ IRON THE FABRIC AT MODERATE TEMPERATURE.



M
MUSHQ
Abroad by abroad



FEBRU
TOP: PURE DALL
DUPATTA: PURE
DUALITY: PURE
WIFE



TOP:- PURE DULL ORGANZA EMBROIDERED WORK
WITH MOTI WORK
BOTTOMINNER:- SANTOON
DUPATTA:- PURE ORGANZA WITH EMBROIDERED WORK
WITH CUT WORK



M-290 A



M-290 B



M-290 C



M-290 D



M-290 D



FEBRIC DETAIL

TOP:- PURE DULL ORGANZA EMBROIDERED WORK WITH MOTI WORK

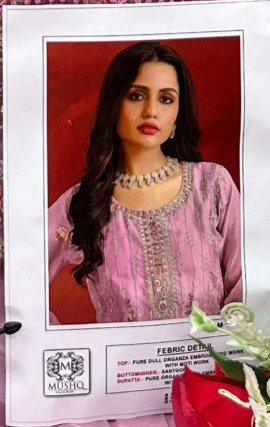
BOTTOMINNER:- SANTOON

DUPATTA:- PURE ORGANZA WITH EMBROIDERED WORK WITH CUT WORK

☉ DRY CLEAN ONLY.
⚠ DO NOT USE ANY BLEACH OR STAIN REMOVING CHEMICAL.
☐ IRON THE FABRIC AT MODERATE TEMPERATURE.



M
MUSHQ
A brand by strathella



FABRIC DETAILS
TOP: PURE SILK, ORGANZA EMBROIDERED
BOTTOM: PURE SILK, ORGANZA EMBROIDERED
QUANTITY: 100% COTTON